



Get outside with Shelta

CANTILEVER UMBRELLAS

Installation - Setup - Care & Maintenance

Important

Keep these instructions in a safe place for future reference.

Some aspects of installation may require the services of a qualified / experienced trades-person or installer. Consider this before attempting installation yourself.

Note: Shelta is constantly updating product specifications and instructions. For the latest version of the instructions, visit the website.

1) Safety Warnings / Care & Maintenance. 3-4

2) Warranty Terms & Conditions. 5

3) Clearances. 6

4) Mounting Options 7-16

Overview of all mounting options (Page 7)

Option 1. On-Ground Plate. For mounting the umbrella on a concrete patio, slab or footing (Pages 8-10)

Option 2. Ballast Block Frame. For mounting the umbrella on most surfaces including grass (Pages 11-12)

Option 3. Shelta Resin Base. For mounting the umbrella on most hard surfaces including timber decks (Pages 13-14)

In-Ground Base. For mounting AG60 / AG65 / AKZP umbrellas on a dedicated, permanent concrete footing (Page 15-16)

5) Umbrella Installation 17-18

6) How To Relocate Umbrella (Ballast Block Frame / L/XL Resin Base Models) 19

7) How To Assemble, Set Up & Use Your Umbrella 20-41



You will find your umbrella’s Frame Code printed on the carton. The instruction pages for assembly, set up and usage can be found using the table below.

Page (Title)	Frame Code	Model Names				Page #
7.1	AG5A	Altrani	Pambula	Pandanus		20-21
7.2	AG5C	Eden				22-23
7.3	AG5CII	Airlie				24-25
7.4	AG5CD	Tivoli				26-27
7.5	AG5CA	Shelly (With Integrated LED Lighting)				28-29
7.6	AG15A	Seychelles				30-31
7.7	AG15AII	Emery (With Integrated LED Lighting)	Alba			32-33
7.8	AD45	Pampa				34-35
7.9	AG45	Lynden	Palm Beach			36-37
7.10	AG35	Savannah	Treviso	Toronto		38-39
7.11	AG25	Ravello				40-41
7.12	AG25AB	Regis	Rialto			42-43
7.13	AG60	Siena				44-45
7.14	AG65	Asta	Solarmax	Trieste		46-47
7.15	AKZP	Ravenna				48-49

8) Integrated LED Lighting System - How To Use (Selected Models Only) 50

9) Optional LED Lighting Kit / Bluetooth Speaker Kit (Accessories) How To Install. 51

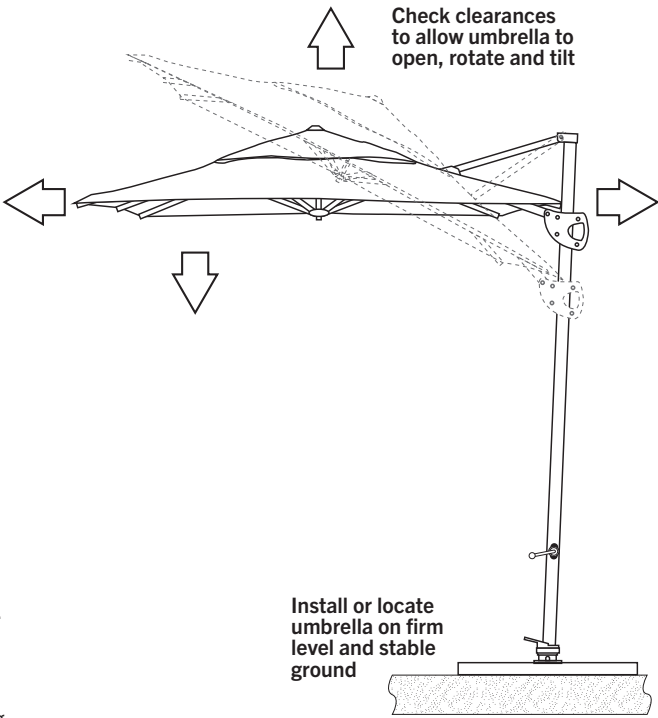
1) Safety Warnings / Care & Maintenance



Caution: Failure to follow the safety warnings and instructions provided in this manual may lead to an incident resulting in injury or even death to you or others. Read the instructions carefully before assembly and installation of the umbrella.

Installation warnings

- Before installing the umbrella, carefully consider the location where the umbrella will be installed and the type of mounting solution required. **Ensure there is sufficient clearance around and above the umbrella to allow the umbrella to open, rotate and tilt.**
- Ensure the location where the umbrella will be installed is **firm, level and stable**. Do not install umbrella on sloping or soft ground.
- This umbrella is not recommended for exposed environments such as high balconies or apartment roof tops.
- Carefully read all installation and usage instructions supplied. If in doubt, consult a qualified trades-person or contact Shelta.**
- Cantilever umbrellas are heavy and may require two or more able bodied people to lift, install, or move.
- Only use recommended Shelta bases or anchoring systems.

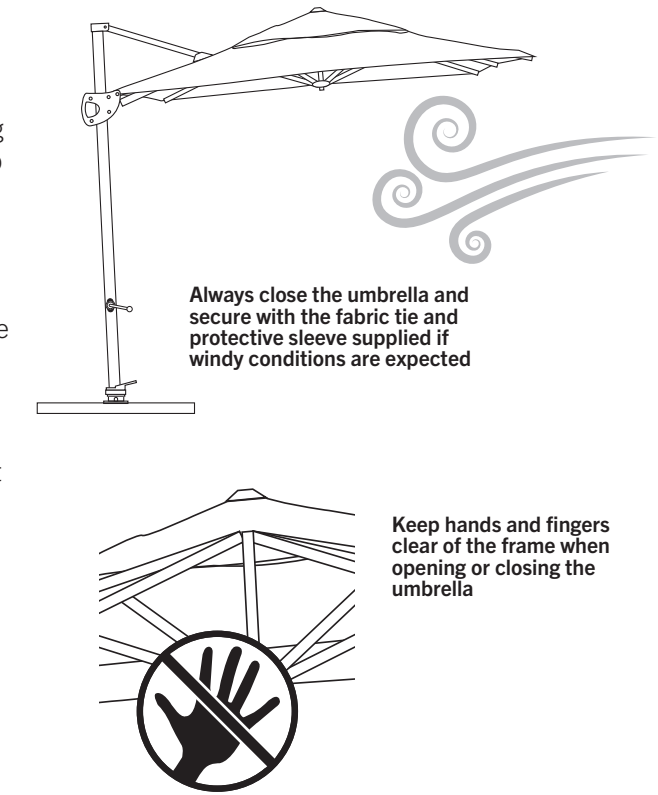


Packaging warnings

- Confirm you have all umbrella components before disposing of packaging.
- On some umbrellas, small packaging sleeves may be fitted to the frame and ribs to prevent transit damage - **Remove all protective packaging from umbrella frame before use.**
- Carefully dispose all packaging in appropriate waste bin.

General safety warnings

- This umbrella is not a permanent shade structure and must be lowered when unattended or when windy conditions are present. Never leave the umbrella unattended while open. Weather conditions may change without warning and strong gusts of wind may cause the umbrella to uplift, fall over or to break away from the mounting.
- Excessive wind can place immense stress on the frame and mounting, which can cause damage to the umbrella and present a hazard or danger to people. Always close the umbrella and secure with the fabric tie and protective sleeve supplied if windy conditions are expected.
- Keep hands and fingers clear** of the umbrella frame when opening or closing the frame.
- Do not allow young children to operate the umbrella without supervision. Always supervise young children when in the vicinity of the umbrella.
- Do not force the crank or opening system.** If there is resistance when attempting to open the umbrella, check for damage to the frame, or interference from surrounding objects or structures.
- If part of the umbrella frame should become damaged, it should be repaired prior to continued use. Continued use of a damaged umbrella could cause damage to property or injury to persons.





Sun Protection

The fabric canopy supplied with this umbrella provides excellent sun protection. However, on high UV days there can be significant reflected sunlight from surrounding surfaces such as walls, windows, paving and pools. As an additional precaution, consider wearing protective clothing and using sunscreen. Always be mindful of your exposure to harsh sun when spending time outdoors. See the information below for UVE specifications for all canopies.

Sun protection and UVE* ratings information

As part of our commitment to sun protection, Shelta places a major emphasis on advising consumers of our product UVE ratings as per Australian Standard **4174:2018 Knitted and Woven Shade Fabrics**. (Tested by ARPANSA).

We take care to select dense, high quality fabrics that look great, as well as help to protect your skin. It is vital for shade product users to understand that they could receive many times more UV from sunlight reflected under the umbrella from surrounding surfaces such as walls, windows, paving and pools than will be transmitted through the umbrella.

Canopy Fabric	UV Effectiveness Category	UV Effectiveness Rating (%)
Sunbrella™ Acrylic	Most Effective	Over 99% UV Effectiveness
O'Bravia™	Most Effective	Over 99% UV Effectiveness
Olefin	Most Effective	95 - 98% UV Effectiveness
Polyester	Effective to Very Effective	90 - 94% UV Effectiveness

*UVE - Ultraviolet Effectiveness: Is a rating that shows how effective a shade fabric is at providing shade for sun protection.

For more information visit: www.shelta.com.au/ultraviolet-protection-ski or visit the ARPANSA website www.arpansa.gov.au

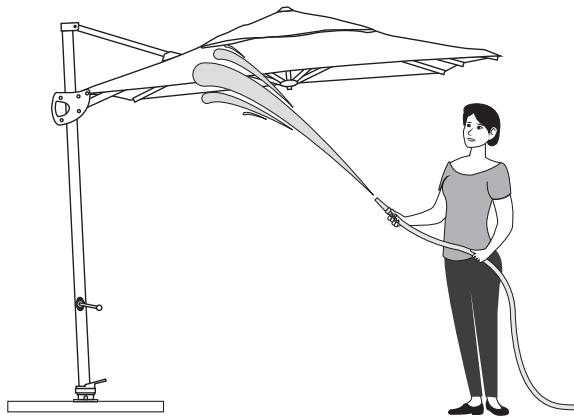
Care & Maintenance Instructions

General care of the umbrella

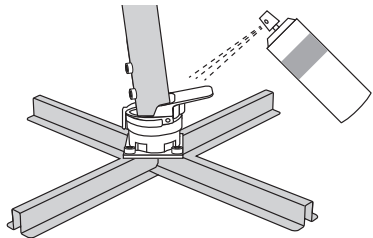
- To prevent damage or scuffing to the umbrella frame or canopy during installation, place the umbrella and components on a blanket.
- Protective sleeve:** Close the umbrella when not in use. Tie the fabric tie around the umbrella and mast, then slip the protective sleeve over the top of the umbrella.
- Always store umbrella in a dry, protected location if it is not to be used for long periods.
- The umbrella should be hosed regularly with fresh water** if it is installed in a location exposed to continuous salt spray or pollution.
- Soiling of the canopy can be minimised by simply brushing off dirt before it becomes embedded in the fabric or spot cleaning soon after stains occur. Fabrics may be treated with a fabric protector for additional protection.
- Prior to long periods of expected rain or wet conditions, it is recommended to store the umbrella in a dry place, to prevent the growth of mould.
- Do not close or store the umbrella when wet** If it is necessary to close a wet umbrella in stormy weather - open and dry the canopy as soon as weather conditions allow.
- Avoid using harsh chemical cleaners. Always test any cleaner on a small area of the umbrella to ensure it is safe to use.
- Do not use bleach on the canopy or frame.**
- Increase the frequency of the annual cleaning routine** if the umbrella is located in a coastal area (salt spray), or located in the vicinity of a swimming pool where splashes or vapours from pool chemicals are present. Pool salt, chlorine, acid and bromine are corrosive and may affect nearby metals and fabrics.

Ongoing maintenance / schedule

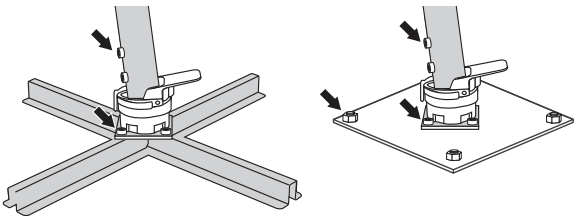
- At least once per year** - hose the umbrella down with fresh water. Use a **soft** scrubbing brush to remove any build-up of dust or grime on the frame or canopy. Increase the frequency of this routine if the umbrella is located near the coast or a swimming pool.



- At least every 6 months** - spray the Rotate Bearing and Ballast Block Frame with WD40 or deoderised fish-oil.



- At least every 3-6 months** - check that umbrella post is secured to the Rotate Bearing / Ballast Block Frame / Resin Base, or On-Ground Plate. Check that all screws and bolts are tight.



2) Warranty

Warranty Terms & Conditions

Shelta Australia warrants this umbrella frame and canopy to be free of manufacturing faults and material defects, to the original purchaser, from the original date of purchase, when used for the purpose of normal domestic use only, during the warranty period(s) contained within the terms and conditions.

Conditions

This warranty covers manufacturing faults and material defects only, and is granted to the original purchaser, from the original date of purchase, when used for normal domestic use, during the warranty period set out in these terms and conditions.

Warranty Periods

Frame (Code)	Warranty Period
AG5A, AG5C, AG5CII, AMG5CD, AG5CA, AG15A, AG15AII, AD45, AG45, AG35, AG25, AG25AB, AG60, AKZP	1 year
AG65	2 years

Canopy Type	Warranty Period
Polyester and Olefin	1 year
O'Bravia Dyed Canvas	3 years
Sunbrella Dyed Acrylic	5 years

Exclusions

This warranty excludes:

- Damage caused by incorrect or inadequate assembly, installation, or use.
- Damage caused by unreasonable force when assembling, installing, or using the umbrella.
- Damage to third party property.
- Wind or other accidental damage.
- Accidental or willful damage to canopy.
- Damage caused by adverse weather conditions, accidents, misuse, negligence, fire, flood, hail, earthquakes, or other natural disasters.
- Failure to close and secure the umbrella in the event of windy conditions.
- Failure to provide adequate care and maintenance.
- Alterations or repairs undertaken by an unauthorised or untrained person.
- Corrosion or rusting of metal parts located near water, pools, salt, or coastal environments.
- Normal wear and tear.
- Commercial use.

How to make a claim

In the event of a warranty claim, contact the retailer from where the product was originally purchased.

Provide the retailer with adequate details of the problem with the product or component. (Such details must be sufficient for Shelta Australia to determine if the Shelta Warranty applies).

You may be required to provide proof of purchase such as a tax invoice or receipt.

In the unlikely event where the original seller is no longer available to assist you with your claim, contact Shelta Australia directly.

FOR EASY WARRANTY REGISTRATION

Scan the QR code on the carton label for quick and easy warranty registration



or register manually at www.shelta.com.au/registration/

What we will do in the event of a claim

In the event of a claim: Shelta Australia will, at their discretion: repair, refinish, replace, or replace with a product or component of similar style and value - or provide a refund (if all other options to remedy the warranty claim have been exhausted).

Refunds: Where the original seller is no longer available or has ceased trading, Shelta Australia limits its liability to the wholesale value of the item.

The Shelta Warranty outlined herein applies only to the original purchaser from the original date of purchase, and only covers (subject to the terms set out herein) manufacturing faults or defects which occur in normal domestic use.

Additional information about this warranty

Shelta Australia will not be liable for any act, default, omission, or representation made by any person other than our employees, alterations made to the product not performed by us, damage, or defects due to unusual or non-recommended use, or damage or loss caused by any factors beyond our control.

Shelta Australia's total liability in respect of a claim by a consumer under the Competition and Consumer Act (CCA) for a minor problem (as defined in the CCA) with a product is limited, at our option to, providing the consumer with a repair, replacement, or refund.

Subject to the above paragraphs, all express or implied representations, conditions, statutory guarantees, warranties, and provisions (whether based on statute, common law or otherwise), relating to this warranty, that are not contained in it, are excluded to the fullest extent permitted by law.

Nothing in this warranty excludes, restricts, or modifies any condition, warranty, statutory guarantee, right or remedy, implied or imposed by common law, statute, or regulation, which cannot be lawfully excluded, restricted, or modified.

Consumer Guarantees

Our goods come with guarantees that cannot be excluded under the Australian Consumer Law. You are entitled to a replacement or refund for a major failure and compensation for any other reasonably foreseeable loss or damage. You are also entitled to have the goods repaired or replaced if the goods fail to be of acceptable quality and the failure does not amount to a major failure. Such guarantees may include the right to a remedy from Shelta Australia if our products are not of an acceptable quality or do not match any demonstration model or sample (as those terms are defined in the Competition and Consumer Act (CCA)).

For warranty or technical assistance, contact Shelta Australia

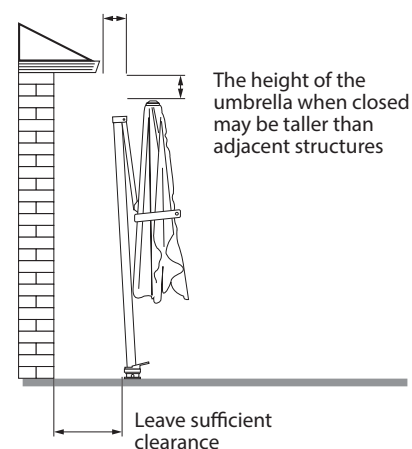
3) Clearances



Carefully consider clearance requirements before setting out any concrete footing and before installing your umbrella. Note that the umbrella height will vary between the closed and open state. Refer to the umbrella dimensions provided in this manual to assist with planning the installation location of the umbrella in respect to adjacent fixed obstacles such as: building structures, eaves & gutters, fences & garden walls.

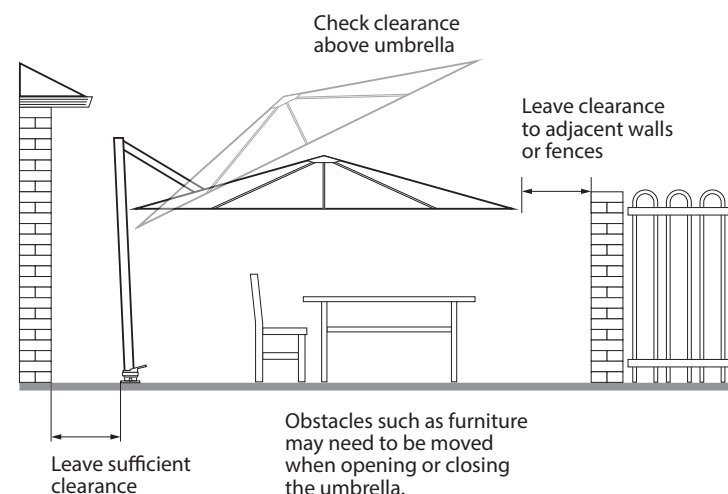
Clearances - when the umbrella is closed

- The height of the umbrella when closed, may be taller than adjacent structures or obstacles. Allow sufficient clearance for the umbrella to be opened and closed.
- Leave sufficient clearance to allow the operation of the crank and Main Frame Grip.



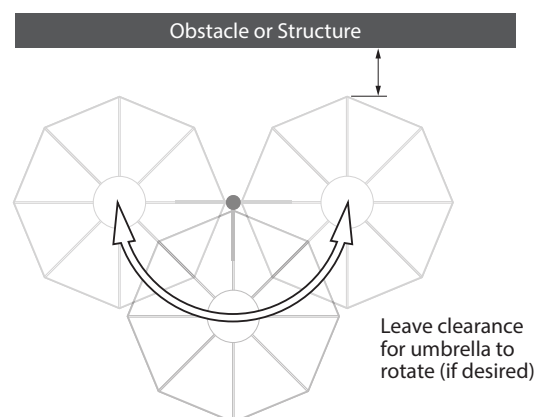
Clearances - when the umbrella is open (or tilted)

- Leave sufficient clearance around the umbrella mast to allow it to be opened and tilted.
- Leave sufficient clearance from the umbrella to adjacent walls or fences. Such structures may interfere with the operation of the umbrella.
- Note that obstacles such as garden furniture may need to be moved to allow the umbrella to open and close.



Clearances - for the umbrella to be rotated (if desired)

- When the umbrella is rotated, the canopy follows an arc around the mast.
- Leave sufficient clearance around the umbrella canopy to allow it to be rotated (if desired).



4) Mounting Options

Important: Note the different mounting options available for each umbrella. Consider these mounting options carefully - according to mounting option availability and your needs - before assembling, installing or using your umbrella.

Frame Code	Mounting options available			
	Option 1. On-Ground Plate	Option 2. Ballast Block Frame	Option 3. Shelta Resin Base	Option 4. In-Ground Base
AG5A	✓	✓	✗	✗
AG5C	✓	✓	✗	✗
AG5CII	✓	✓	✗	✗
AG5CA	✓	✓	✗	✗
AG15A	✓	✓	✗	✗
AG15AII	✓	✓	✗	✗
AD45	✓	✓	✗	✗
AG45	✓	✓	✗	✗
AG35	✓	✓	✓	✗
AG25	✓	✓	✓	✗
AG25AB	✓	✓	✓	✗
AG60	✓	✗	✗	✓
AG65	✓	✗	✗	✓
AKZP	✓	✗	✓	✓

Option 1. On-Ground Plate

This is the preferred mounting option for all cantilever style umbrellas.

Suitable for: Mounting umbrella on reinforced concrete slab.

Best solution for:

Mounting your umbrella in a permanent location.



Instructions begin on Page 8

Option 2. Ballast Block Frame

Suitable for: Most surfaces including grass.

Suitable solution for: where you need the flexibility to move the umbrella around - from one location to another.



Instructions begin on Page 11

Option 3. Shelta Resin Base

Suitable for: Most hard surfaces including timber decks.

Suitable solution for: where you need the flexibility to move the umbrella around - from one location to another.

There are two models available:

Large Resin Base
(Fixed Non-Mobile).

Extra Large Resin Base
(Mobile with wheels).



Instructions begin on Page 13

Option 4. Stub Mast and optional In-Ground Base For AG65 ONLY.

Follow the mounting instructions on page 15.



Option 1. On-Ground Plate

Suitable for concrete patio, slab or footing

Shelta recommends this as the preferred mounting method for all cantilever style umbrellas. It is the best solution for mounting your umbrella in a permanent location on either: a concrete patio (min 10cm thick), a reinforced concrete slab (1 metre sq x minimum 10cm thick) or a concrete footing (at least 40cm diameter x 75cm deep). **See Fig A.**

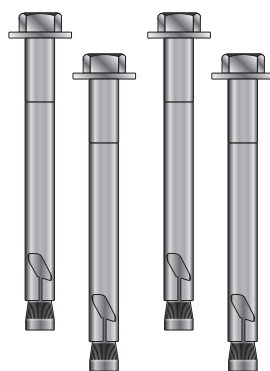
What you'll need: (Supplied)

- On-Ground Plate (E: 1 supplied)
- Rotate Bearing (D: 1 supplied)
Extra rotate bearings and mountings can be purchased for installing the umbrella in additional locations.
- 4 x M8 x 18mm Allen Key Screws (Supplied)

Note: Rotate Bearings and On-Ground Plates may vary in size, shape and specification, depending on the umbrella model you have purchased.

What you'll need: (Not Supplied)

- 4 x stainless steel masonry anchors 10mm Ø x 100mm (available from your local hardware store).
- We recommend avoiding the use of coated or galvanised anchors as they may not fit correctly in the On-Ground Plate.**



D: Rotate Bearing



4 x M8 x 18mm Allen Key Screws (& Washers)



E: On-Ground Plate

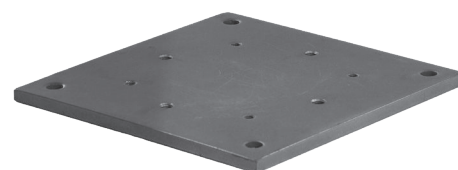
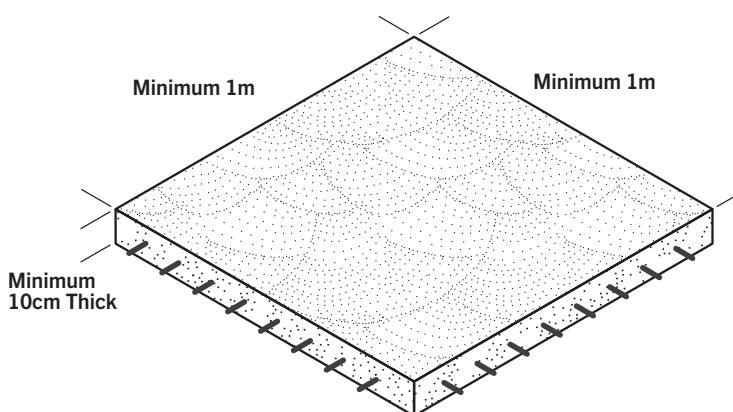


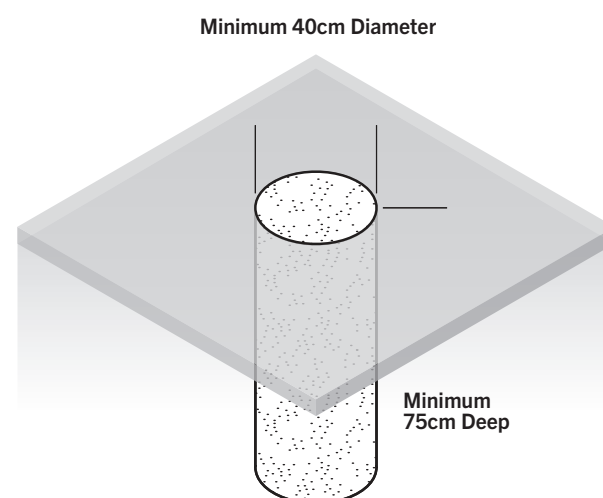
Fig A. Slab / footing details

Reinforced concrete slab or concrete patio



For existing concrete slabs or concrete patio, confirm the slab thickness is at least 10cm thick.

Concrete Footing

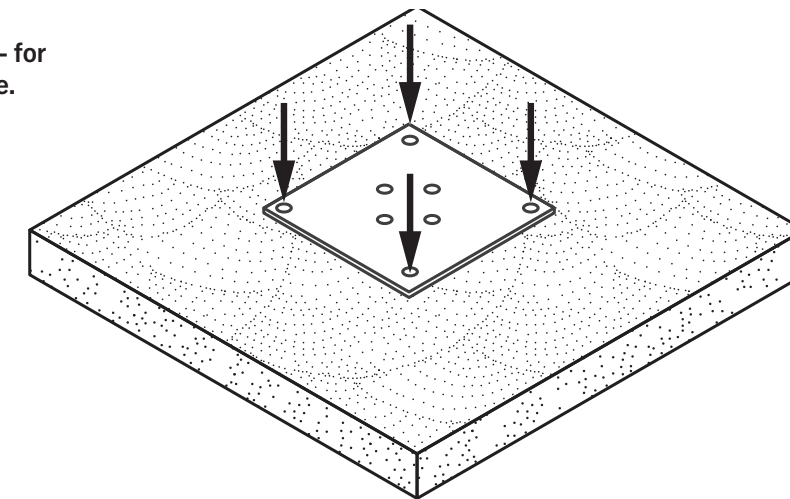


If you are creating a dedicated slab or footing for your umbrella, allow sufficient time for the concrete to set and cure before commencing installation of the On-Ground Plate - between 2-7 days depending on the type of concrete used.

Note: The top of the footing must be level in all directions.

Step 1. Mark the location of the mounting holes - for the On-Ground Plate - onto the mounting surface.

Position On-Ground Plate on the slab surface. Note the location of the four outer mounting holes. Use a marker pen to transfer the hole positions to the slab as shown.

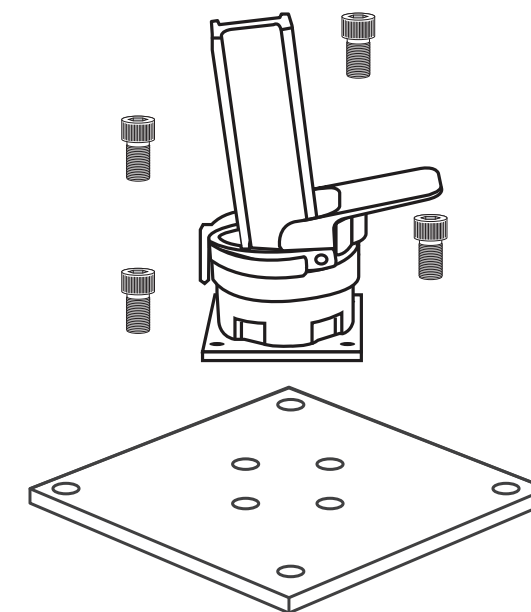


Tip: Use a steel centre-punch or nail to mark the centre of each hole. This will help keep the masonry bit centered when starting the hole.

Step 2. Attach the Rotate Bearing to the On-Ground Plate

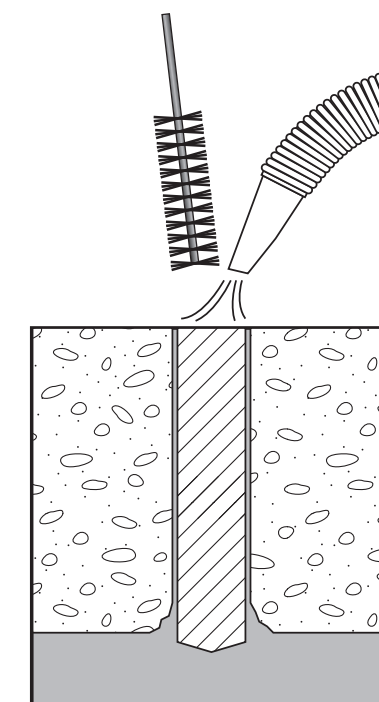
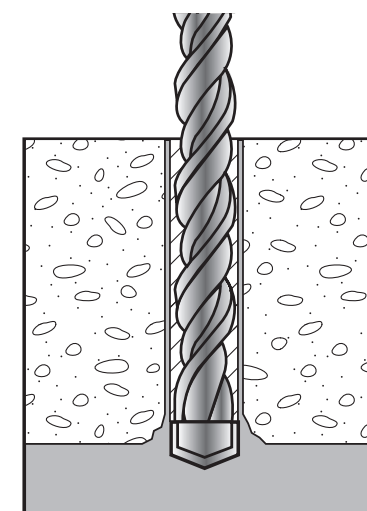
Position the Rotate Bearing over the four (or 5) inner holes on the On-Ground Plate.

Secure the Rotate Bearing to the On-Ground Plate using four M8 x 18mm screws supplied. Tighten Screws firmly.



Step 3. Drill the mounting holes into the concrete slab

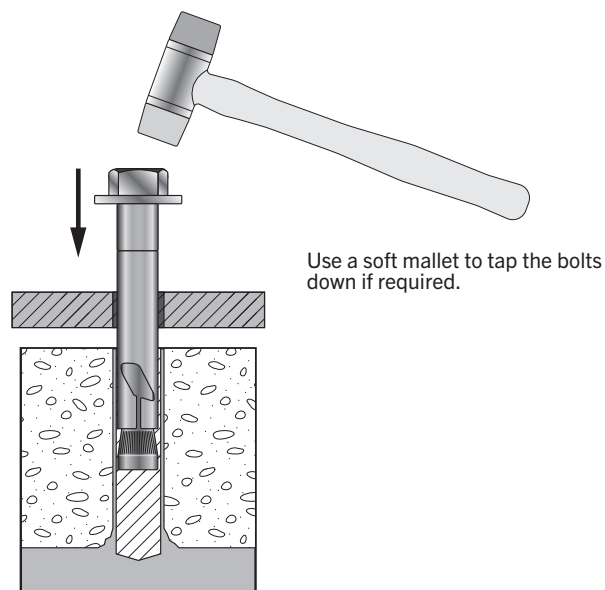
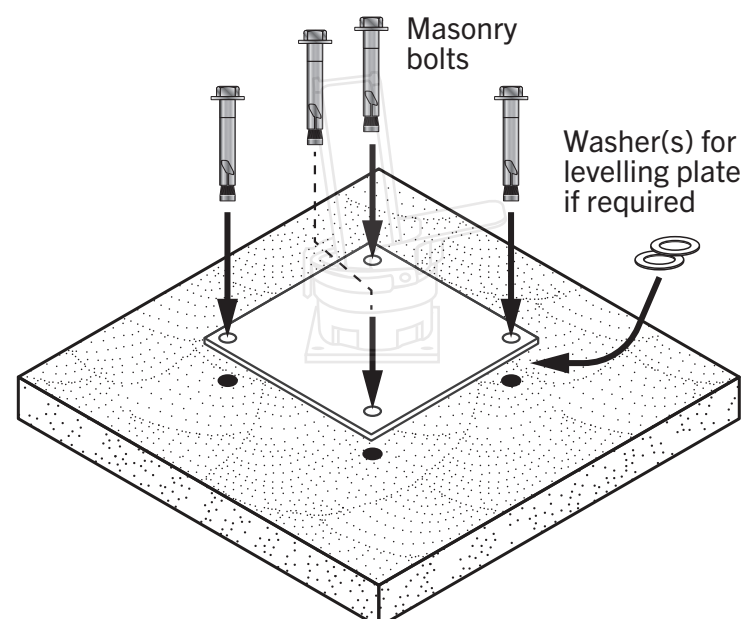
- Using a drill with a 10mm masonry bit; drill the holes to a depth of 100mm.
- Clear the holes using a brush, vacuum cleaner or compressed air.



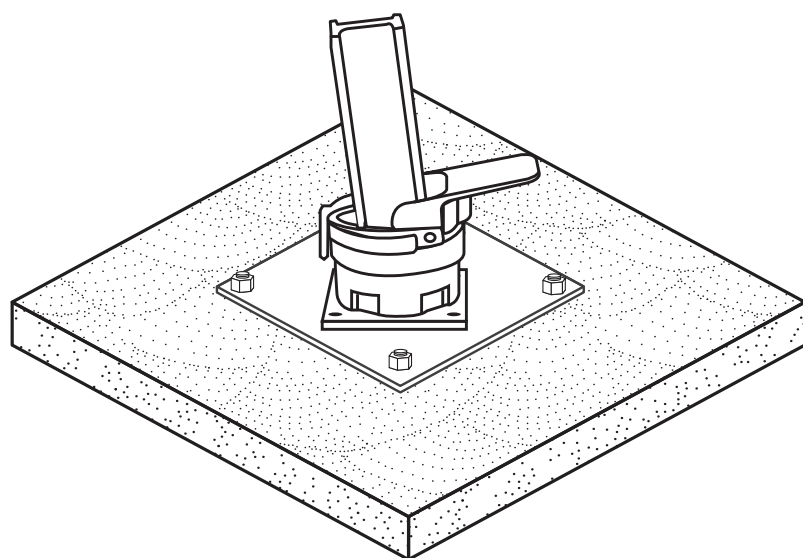


Step 4. Attach the On-Ground Plate

1. Place the On-Ground Plate in position over the holes.
2. If mounting surface is uneven, we recommend using some galvanised steel washers underneath the plate to level it.
3. Insert the 4 masonry bolts - gently tap each bolt down with a soft mallet if required.



4. Tighten all four bolts firmly.
(Recheck bolt tightness after about 30 days).

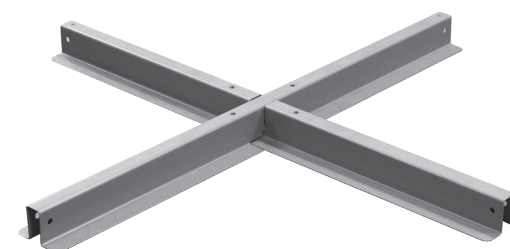


The Rotate Bearing and On-Ground Plate are now ready for the installation of your umbrella. **PROCEED TO PAGE 16.**

Option 2. Ballast Block Frame

Suitable for most surfaces including grass

Best solution for when you need the flexibility to move the umbrella around from one location to another. It is suitable for most surfaces including grass.



Stainless Steel Option Available

Where the umbrella is to be located close to water or corrosive environments (Coastal areas), the standard steel cross frame supplied may be susceptible to rusting, which may leave staining on the surface on which it is installed.

A stainless steel version (BSXFRM.SSTL) is available from your Shelta stockist. This suits all models except the AG65 and AKZ.

Important - Ballast Requirements:

Minimum ballast weight requirements stated only. Additional ballast will be required for use in breezy conditions.

- A minimum of 6 Shelta Concrete Ballast Weights or 6 concrete pavers **of equivalent size and weight** for models with a canopy opening size of 300-380cm.
- A minimum of 8 Shelta Concrete Ballast Weights or 8 concrete pavers **of equivalent size and weight** for models with a canopy opening size of 300cm x 400cm.

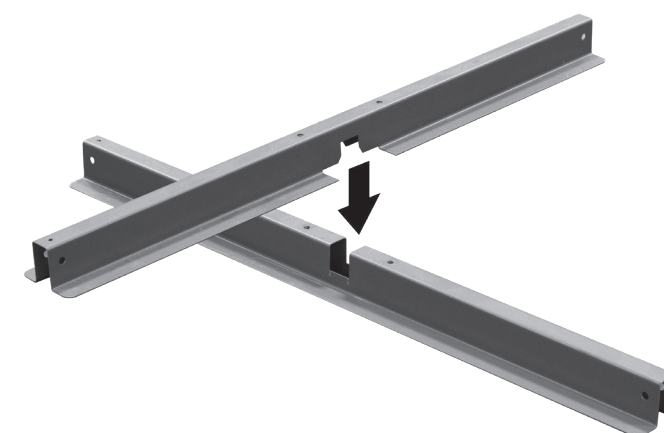
See ballast reference table. (Fig B).

Note: If the location is typically subject to wind, place extra ballast on the 'wind' side of the umbrella base. (Fig C).

Step 1. Assemble Ballast Block Frame

Assemble the upper and lower parts of the Ballast Block Frame.

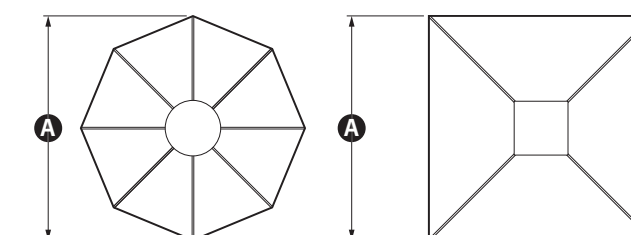
(Note correct orientation of the parts)



Ballast Block Frame (C) is included with your umbrella. Ballast weights (Shelta Concrete Ballast Weights or paving blocks) must be purchased separately.

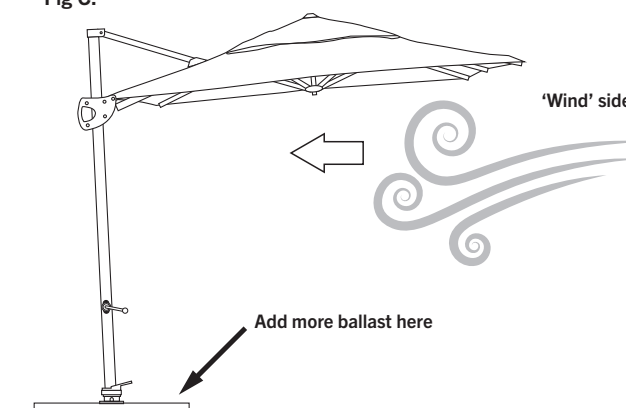
Note: Not included with AG65 or AKZP

Fig B.



Canopy Opening Diameter (A)	Shelta Concrete Ballast Weights or Concrete Pavers	Minimum Weight
300cm, 330cm, 350cm, 380cm	6	~150kg
300cm x 400cm	8	~200kg

Fig C.

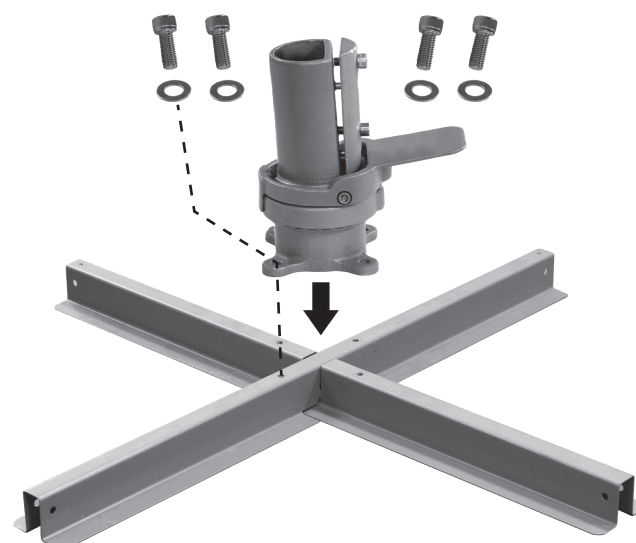




Step 2. Attach Rotate Bearing To Ballast Block Frame

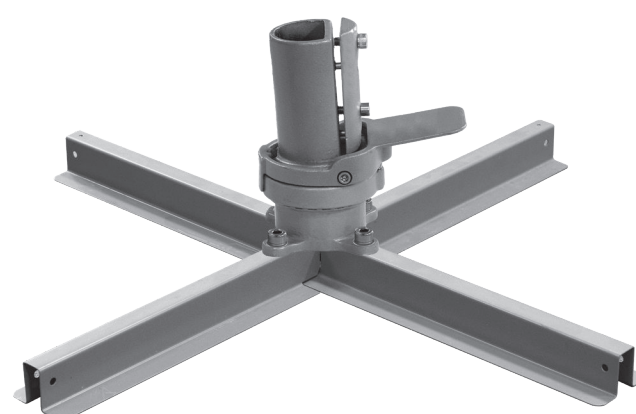
Attach the Rotate Bearing (D) to the Ballast Block Frame using the four M8x20mm screws and washers provided.

Tighten the screws firmly.



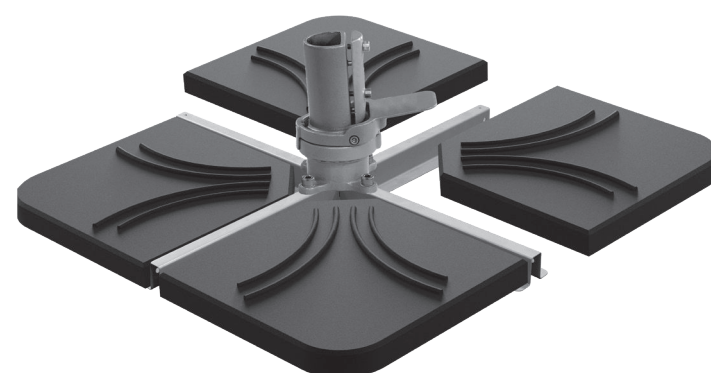
Step 3. Position The Ballast Block Frame

Place the assembled frame in the required location. Note: for safe use the surface should be level, firm and stable.



Step 4. Add Ballast - Shelta Concrete Ballast Weights or Concrete Pavers

Place at least 6 x Concrete Ballast Weights or paving blocks on the assembled frame. If the location is subject to wind, place extra weights/blocks on the wind side of the umbrella. (See Fig C. Pg 11.)



The Rotate Bearing and Ballast Block Frame are now ready for the installation of your umbrella.

PROCEED TO PAGE 16.

Option 3. Shelta Resin Base (All Models)

Suitable for most surfaces including timber decks

A Shelta Resin Base is ideal for when you need the flexibility to move the umbrella around from one location to another. It is suitable for most hard, level, and stable surfaces, including timber decks.

Note: the Ballast Block Frame and the On-Ground Plate are not required for this mounting option.

What you'll need: (Not supplied)

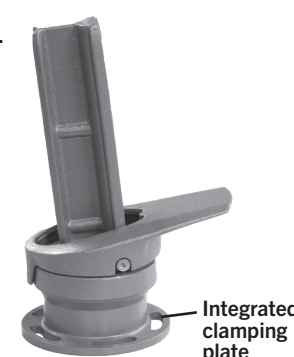
- A Shelta Large Resin Base - available from your local retailer (Mobile and Fixed - versions available).
- This base holds up to 100kg of 5mm blue metal and 10-20kg of fine, dry sand.

! PLACE RESIN BASE IN POSITION WHERE UMBRELLA IS TO BE INSTALLED BEFORE ADDING BALLAST. USE DRY MATERIALS ONLY - DO NOT USE WATER.

Step 1. Prepare Rotate Bearing (If Required)

If the Rotate Bearing supplied with your umbrella looks like **(A)**, you can proceed to Step 2 below.

Type (A).

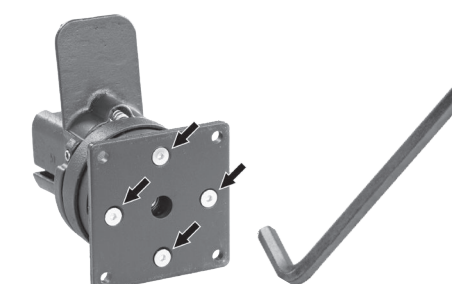


If the Rotate Bearing supplied with your umbrella looks like **(B)**; remove the plate from the bottom of the Rotate Bearing.

Type (B).



To remove the square plate from the bottom of the Rotate Bearing (D) unscrew the 4 countersunk screws. Set screws aside. Now proceed to Step 2 below.



Step 2. Remove Base Stem From Resin Base

Use the wrench (supplied with the Resin Base) to unscrew the Base Stem from the Resin Base. (Turn anti-clockwise to unscrew)

Set Base Stem aside and remove the Cover from the Resin Base.



Step 3. Fill The Base With Blue Metal / Sand

Fill the base with suitable aggregate, blue metal or similar. (The Resin Base will hold up to 100kg of 5mm blue metal and 10-20kg of fine, dry sand). Add sand last.

Note: All cavities must be filled with material (except the centre hole for the base stem).

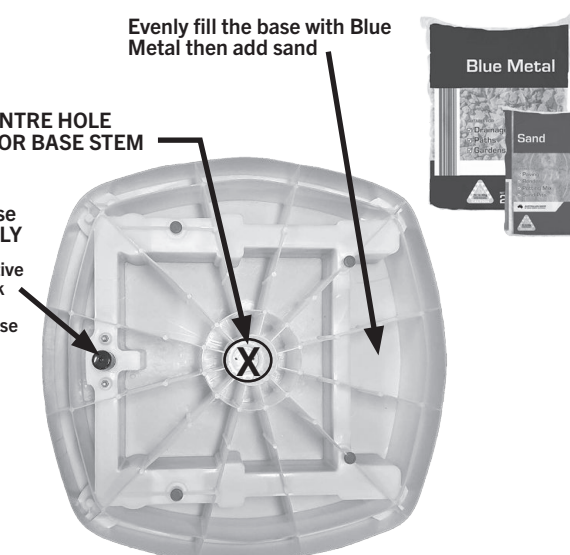
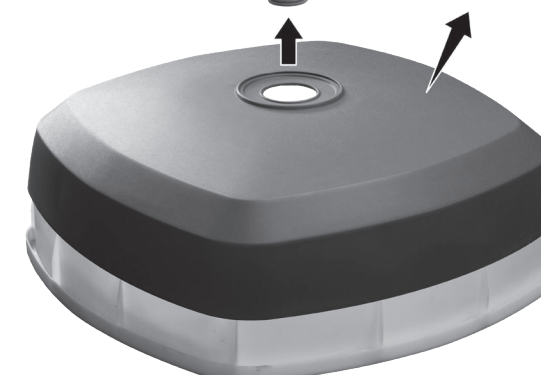
Note: **On the X-Large Resin Base With Wheels - ONLY.** Once the base has been filled, remove the protective cover from the crank winder head located at the front of the base.

Evenly fill the base with Blue Metal then add sand

KEEP CENTRE HOLE CLEAR FOR BASE STEM

! X-Large Resin Base With Wheels - ONLY

Remove this protective cover from the crank winder head, before reassembling the base



Shelta Resin Base and ballast materials are not included with your umbrella and must be purchased separately.



Resin Base (Base & Cover)

Step 4. Refit The Resin Base Cover

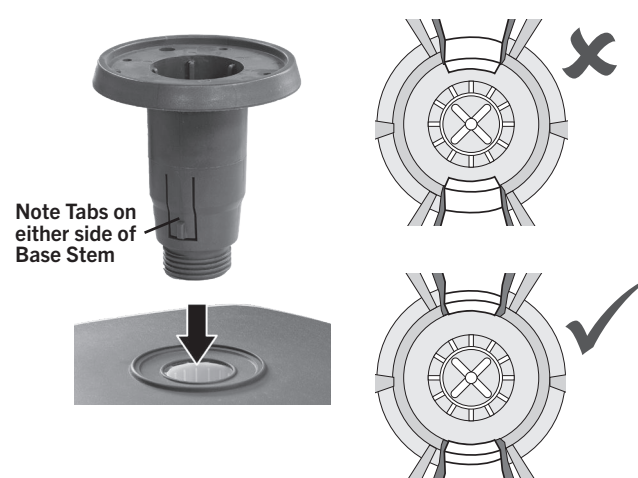
Refit the base cover. Ensure cover is seated evenly on all sides. Remove any loose pieces of ballast that may prevent cover from being seated correctly.



Step 5. Attach The Base Stem

IMPORTANT: Note the following before attaching the Base Stem to the Resin Base. The Base Stem stem has two tabs that prevent the umbrella assembly from accidentally unwinding from the Resin Base.

As the Base Stem is being screwed into the base, you will hear a ratcheting sound as the tabs engage with the slots in the mounting hole. The tabs must engage fully into the adjacent slots otherwise the steel mounting connector will not fit correctly into the Base Stem.



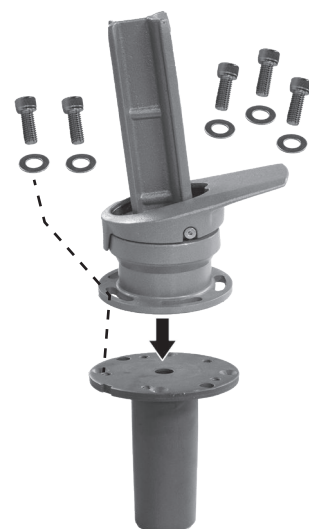
Use the wrench supplied to tighten the Base Stem (Clockwise to tighten). Do not over-tighten the Base Stem.



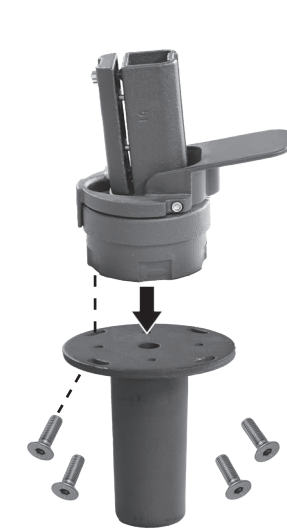
Keep the wrench in a safe place for future use.

Step 6. Attach Rotate Bearing To Base Stem Connector

Type (A) Attach the Rotate Bearing to the steel mounting adapter using 5 x M8 x 18mm screws and washers. Tighten screws firmly.



Type (B) Attach the Rotate Bearing to the steel mounting adapter using the 4 **counter-sunk screws** that were removed in step 1. Tighten screws firmly.

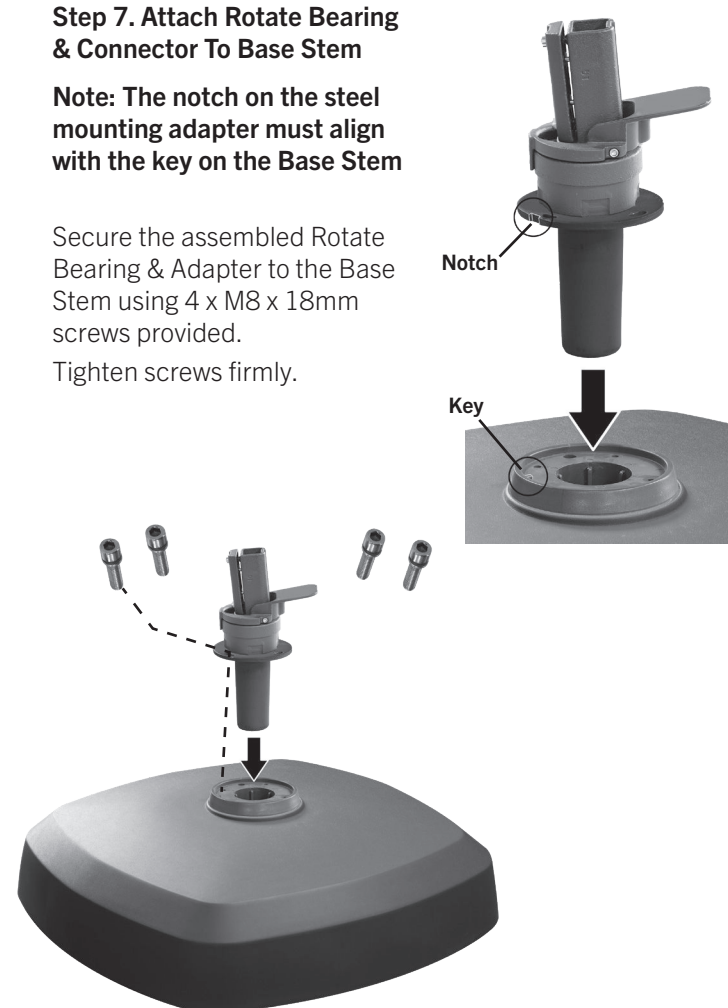


Step 7. Attach Rotate Bearing & Connector To Base Stem

Note: The notch on the steel mounting adapter must align with the key on the Base Stem

Secure the assembled Rotate Bearing & Adapter to the Base Stem using 4 x M8 x 18mm screws provided.

Tighten screws firmly.



The Resin Base is now ready for the installation of your umbrella.

PROCEED TO PAGE 16.

Option 4. In-Ground Base

Installation notes and instructions

IMPORTANT - Please read these instructions carefully before proceeding with installation of the In-Ground Base.

AG60 can be installed using the supplied Stub Mast and On-Ground Plate mounted directly to an existing concrete slab, or to a dedicated concrete footing using the optional In-Ground mounting base.

AG65 can be installed using the supplied Stub Mast, mounted directly to an existing concrete slab, or to a dedicated concrete footing using the optional In-Ground mounting base.

The Stub Mast has a series of holes at the top that allow the umbrella mast to lock in place using the locking pin provided with the umbrella. This prevents the umbrella from accidentally rotating from the desired position.

Aligning the Stub Mast (AG65)

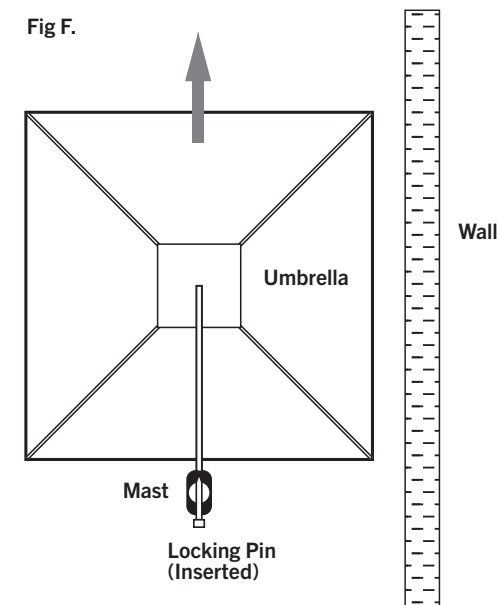
Regardless of which type of mounting method is being used, the Spigot must be aligned correctly to ensure the umbrella is pointing in the desired direction when being installed - especially if it is being installed adjacent to a nearby wall.

To Align The Stub Mast

Use a steel rod or wooden dowel to insert through the top of the spigot. **Fig D.**

Align the rod so it is parallel to the adjacent wall. Use a measuring tape to confirm the rod is the same distance from the wall at either end. **Fig E.**

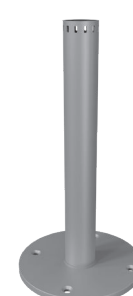
When the umbrella is installed onto the spigot, the umbrella will be correctly aligned with the wall. **Fig F.** and can be rotated through the pre-set locking positions without colliding with an adjacent wall. **Fig G.**



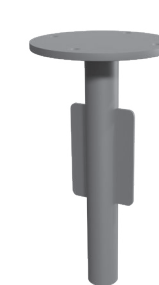
Stub Mast
(Spigot)
For AG60



Stub Mast
(Spigot)
For AG65



Optional
In-Ground
Base



Note: For mounting of AG60, AG65 and AKZP models.

Fig D.



Fig E.

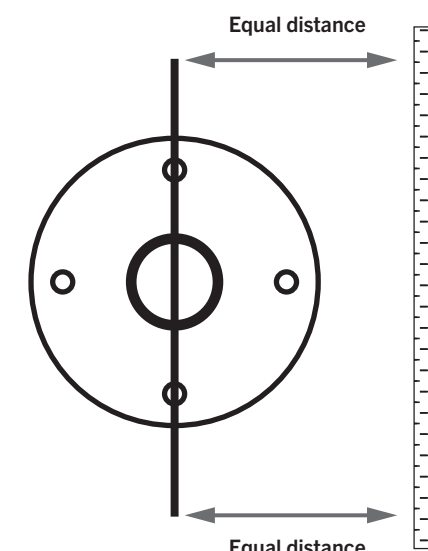
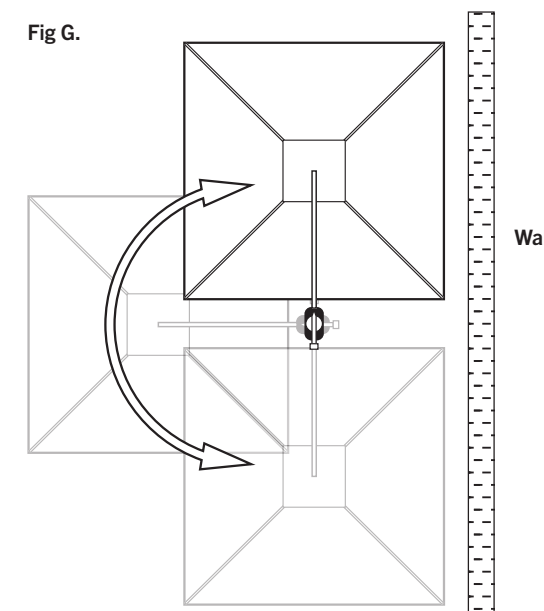


Fig G.



Mounting the Stub Mast directly onto an EXISTING concrete slab

What you'll need: (Supplied)

- Stub Mast (D: 1 supplied)

(Not Supplied)

- 4 x stainless steel masonry anchors 10mm Ø x 100mm (available from your local hardware store).

Full instructions for mounting to a concrete slab are shown on pages 9 & 10.

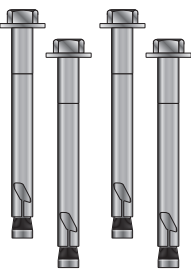
To recap:

- Position Stub Mast on the slab surface. **Align the Stub Mast as per instructions on Page 15.** Use a marker pen to transfer the hole positions to the slab.
- Using a drill with a 10mm masonry bit; drill the holes to a depth of 100mm. Clear the holes with a brush, vacuum cleaner or compressed air.
- Insert the masonry bolts, tap down with a soft mallet. Tighten bolts firmly. Recheck bolt tightness after about 30 days.

Stub Mast (D) For AG65



4 x stainless steel masonry anchors 10mm Ø x 100mm



Mounting the Stub Mast - using the optional In-Ground Base - set into a concrete footing. (AG65 AKZP Models) For AG60 go to page 17.

What you'll need: (Supplied)

- Stub Mast (supplied with AG65)
- Rotate Bearing & On-Ground Plate (supplied with AKZP)
- M8x22mm Screws (4-5 Supplied with Umbrella)

(Available separately)

- In-Ground Base with 4 x M10 Countersunk Screws

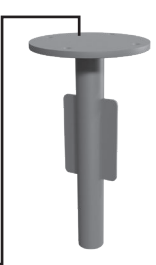
Stub Mast AG65



Rotate Bearing & On-Ground Plate



Optional In-Ground Base



AG65

- Assemble the Stub Mast and In-Ground Base. Tighten screws firmly. (4 x M10 Countersunk Screws).

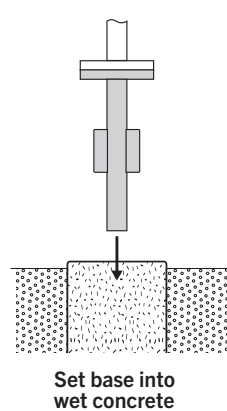
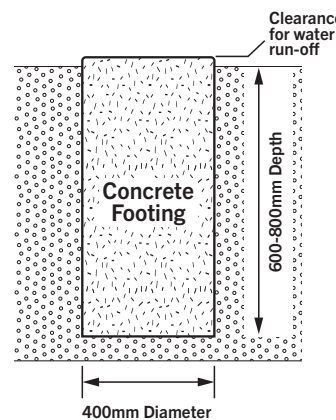
AKZP

- Attach the assembled Rotate Bearing and On-Ground Plate to the In-Ground base using the 4 x M10 Countersunk Screws provided.

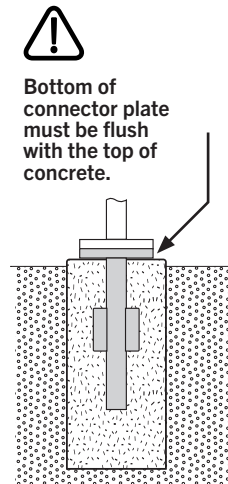
ALL

- Make a concrete footing in the ground. Recommended diameter is 400mm and the depth is 600-800mm. The top of the footing should clear the surrounding ground to ensure sufficient water run-off.
- Once the footing is made, set the assembled In-Ground Base into the wet concrete. Ensure the bottom of the In-Ground Connector Plate is flush with the top of the concrete footing. Do not push the plate too far into the concrete or you may not be able to remove the umbrella in the future.
- Use a spirit level to confirm the Stub Mast / On-Ground Plate is level in all directions.
- Allow the concrete to fully set for a further 2-7 days depending on the type of concrete used.
- Recheck all screws for tightness after about 30 days.

Footing Details



Set base into wet concrete



Bottom of connector plate must be flush with the top of concrete.

5) Umbrella Installation

To install the umbrella

(AG60 only) Figures H-M.

- With the umbrella laying down on a soft surface, remove the 3 screws from underneath the Mast Rotator Handle and set the screws aside. **Fig H.**
- Withdraw the Stub Mast and the Mounting Cover from the bottom of the umbrella mast. **Fig I.**
- A. (Fig J).** If using the On-Ground Plate for installation, attach the Stub Mast to the On-Ground Plate and then install the assembly to an existing concrete slab (as per instructions commencing on page 8).

B. (Fig J). If using the optional In-Ground Base, attach the Stub Mast to the In-Ground Base before creating the concrete footing. Once the concrete is poured, insert the In-Ground Base into the cement making sure it is aligned correctly. (See pages 15 & 16 for details on **Aligning** the Stub Mast and **Setting into Concrete**).

Note: The top of the slab or footing must be level, if it is not, you will need to adjust the Stub Mast, using the 5 adjustment screws provided on the Stub Mast. Use a spirit level to check the vertical alignment of the Stub Mast. **Fig K.**

- Once the Stub Mast is installed - weight for 2-7 days for any newly poured concrete to set before installing the umbrella onto the Stub Mast.
- Fit the Mounting Cover over the Stub Mast, then install the umbrella mast onto the Stub Mast. **Fig L.**
- Refit the screws to underneath the Mast Rotator Handle 1 x M8x16mm at the top and 2 x M8x8mm at the bottom. **Fig M.**

Fig H.

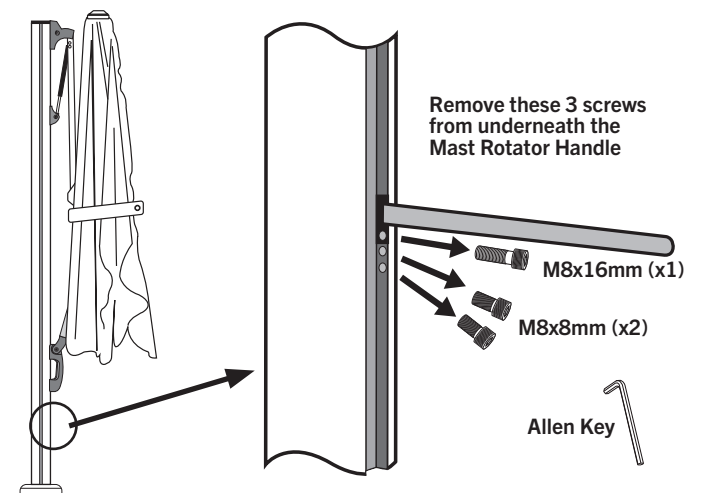
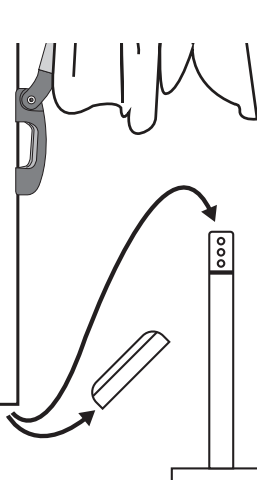
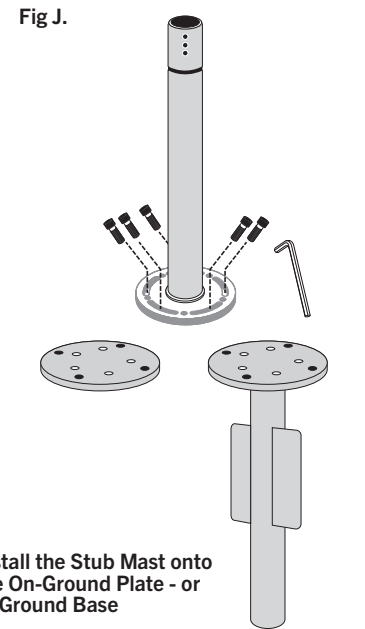


Fig I.



Withdraw the Stub Mast & Remove the Mounting Cover from the umbrella mast

Fig J.



Install the Stub Mast onto the On-Ground Plate - or In-Ground Base

Fig K

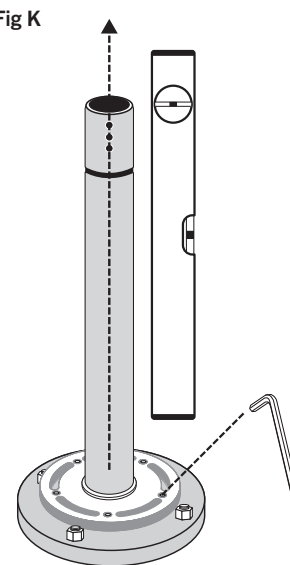


Fig L.

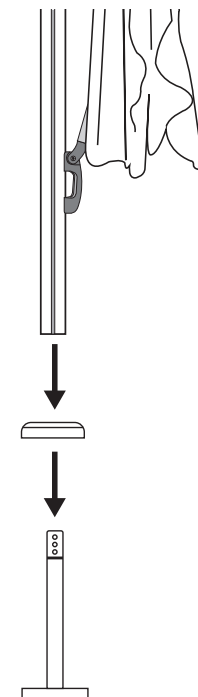
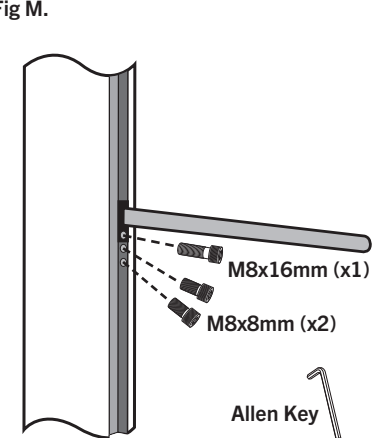


Fig M.





Note: The umbrella frame and canopy is heavy and requires at least two people to lift and move. Use care when lifting or handling the umbrella - to avoid contacting the ground, which may soil or damage the frame or canopy.

Do not unfurl the umbrella before installing it. Ensure the fabric tie is secured around the canopy.

To install the umbrella

All models supplied with Rotate Bearing - Except AG5A) Fig N.

1. Confirm Rotate Bearing is firmly attached to the base. (On-Ground Plate, Ballast Block Frame or Resin Base).
2. Remove the two M8 x 18mm screws from the Rotate bearing stem.
3. Lift the umbrella to the vertical position and carefully lower the mast onto the Rotate Bearing stem.
4. Align the two holes on Umbrella Mast with holes on the Rotate Bearing Stem. Insert the two M8x20mm screws and washers into the bottom of the mast and tighten with the large Allan key. Tighten screws firmly.

To install the umbrella

(AG5A only) Fig O.

1. Untighten the locking screw on the Rotate Bearing Stem
2. Lift the umbrella to the vertical position and carefully lower it into the Rotate Bearing Stem until it reaches the bottom of the stem.
3. Re-tighten the locking screw once the umbrella mast is in place. This will secure the mast to the stem.

To install the umbrella

(AG65 only) Fig P.

1. Lift the umbrella to the vertical position and carefully lower it onto the Stub Mast until it reaches the base of the Stub Mast.
2. Insert the Locking Pin to secure the Umbrella Mast to the Stub Mast. It may be necessary to rotate the Umbrella Mast slightly so the locating holes line up between mast and stub mast.

Locking Pin must be fully in place at all times to prevent umbrella from accidentally rotating or uplifting in windy conditions.

Whenever rotating the umbrella, the canopy should be closed before the locking pin is removed.

To install the umbrella

(AG5C, AG5CII, AG5CA, AG5CD only) Fig Q.

1. Lift the umbrella to the vertical position and carefully lower it onto the Stub Mast (or Base Stem) until it reaches the base of the Stub Mast / Base Stem.
2. Use the twist lock to secure the Umbrella Mast to the Stub Mast. It may be necessary to rotate the Umbrella Mast slightly so the locating holes line up correctly.

Twist-lock must be fully engaged to prevent umbrella from accidentally rotating or uplifting in windy conditions.

Whenever rotating the umbrella, the canopy should be closed before the twist-lock is disengaged.

Fig N.

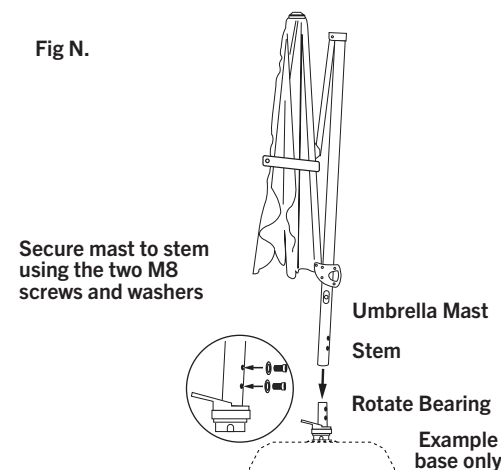


Fig O.

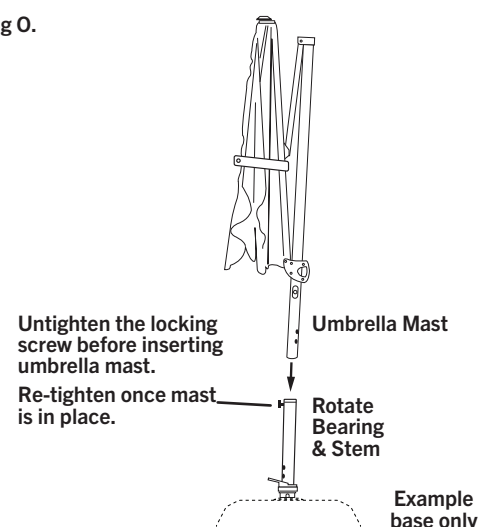


Fig P.

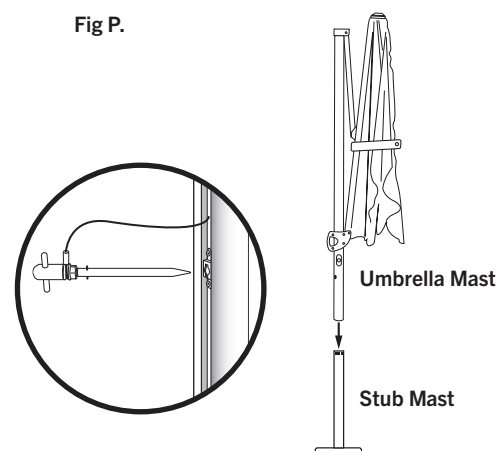
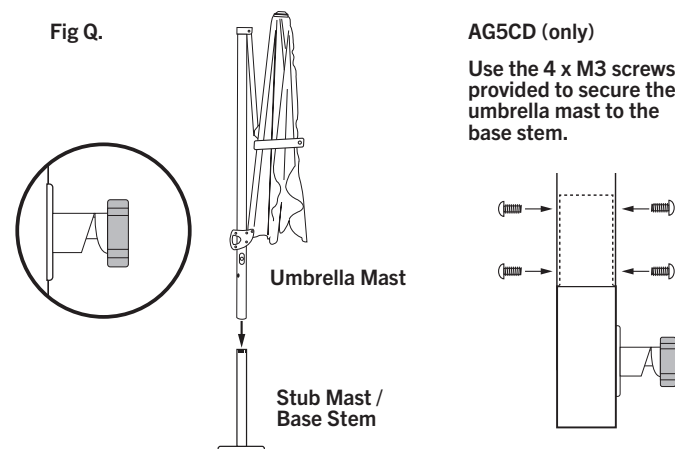


Fig Q.



6) How To Relocate Umbrella

Ballast Block Frame / L & XL Resin Base Models



WARNING: Do not attempt to move a fully assembled umbrella & base without reading these instructions.

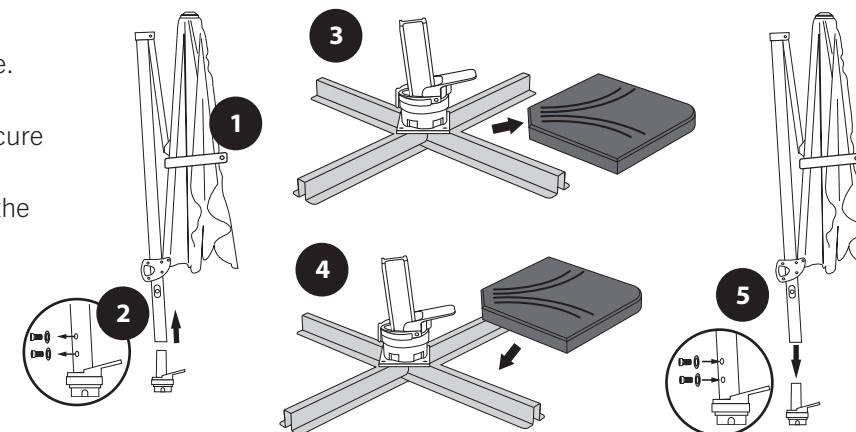
The fully assembled umbrella frame, canopy and base can weigh as much as 200kg and may require disassembly to be safely moved to a new location.

Note: You may need two or more able bodied people to move the umbrella. Never attempt to reposition the umbrella on your own.

Important: Ensure the desired location provides **sufficient clearance** for the umbrella to raise, tilt and rotate.

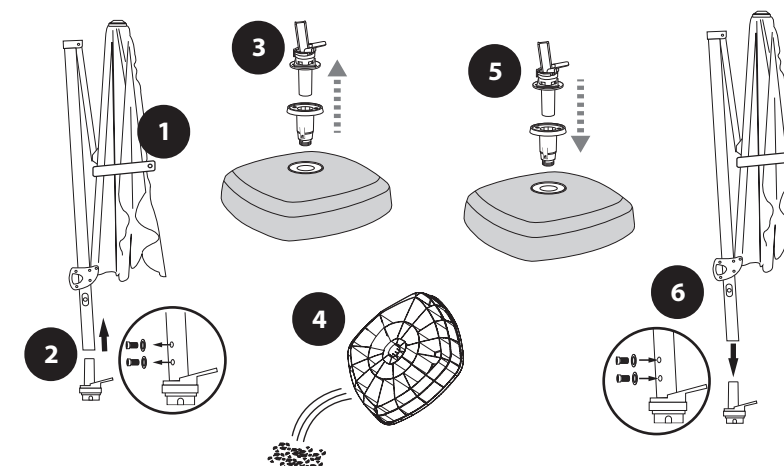
Ballast Block Frame With Ballast Weights

1. Close umbrella and secure with fabric tie.
2. Detach umbrella from rotate bearing. Unscrew the two M8 hex screws that secure umbrella post to Rotate Bearing.
3. Remove individual ballast weights from the Ballast Block Frame.
4. Relocate Ballast Block Frame and refit ballast weights.
5. Reattach umbrella post to Rotate Bearing. Secure umbrella post using the two M8 hex screws. Tighten screws firmly.



Large Resin Base (Fixed, No Wheels)

1. Close umbrella and secure with fabric tie.
2. Detach umbrella and mast from rotate bearing. Unscrew the two M8 hex screws that secure umbrella post to Rotate Bearing.
3. Detach the Rotate Bearing, Base Stem and Cover from the Resin Base.
4. Empty Resin Base and move to new location.
5. Refill and reassemble the Base, Base Stem, and Rotate Bearing.
6. Reattach umbrella to the Rotate Bearing and secure using the two M8 hex screws. Tighten screws firmly.

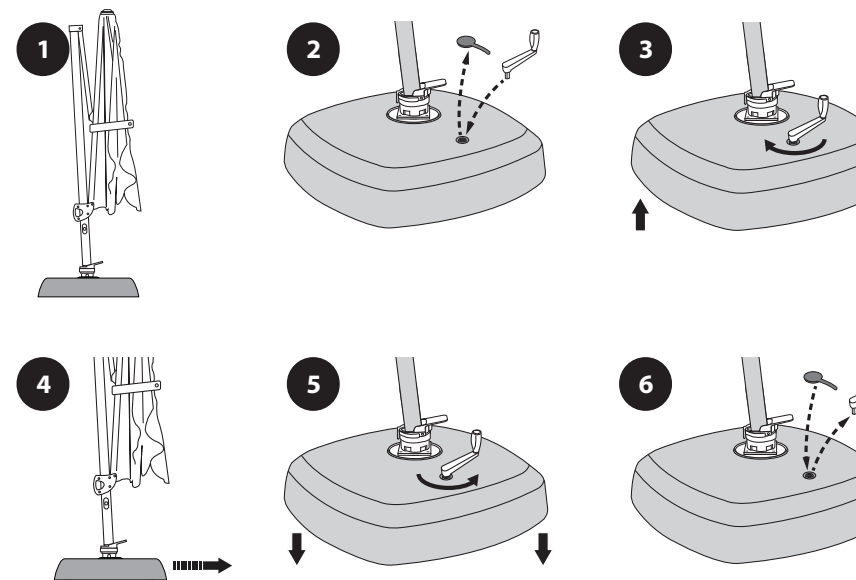


Extra Large Resin Base with Wheels

Crank Winder Lifter

1. Close & secure umbrella with fabric tie.
2. Remove the protective plug from the locating hole at the front of the base, and insert the umbrella crank handle.
3. Wind the crank clockwise - at least 3 rotations - to engage the wheels.
4. Relocate umbrella as required.
5. Wind crank anti-clockwise - at least 3 rotations - to retract the wheels.
6. Remove the crank handle and replace the protective plug.

Push the base not the umbrella. Excessive force placed on the Umbrella mast could damage the Mast or Rotate Bearing.

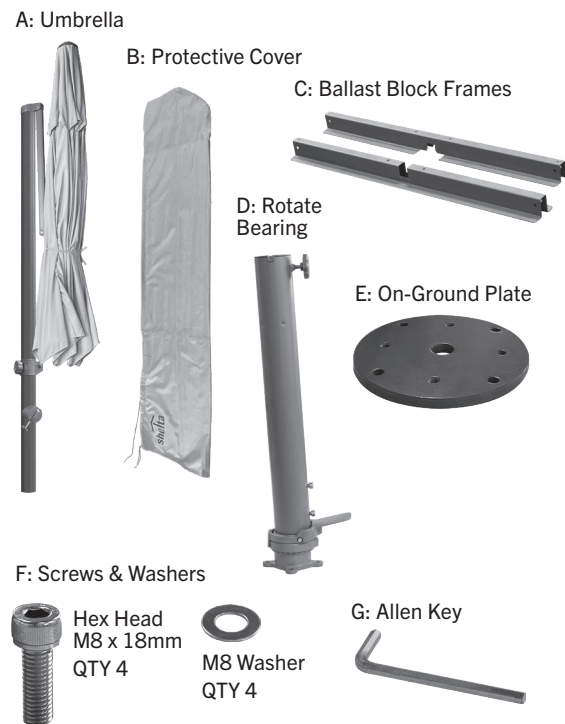


7.1) How To Set Up & Use

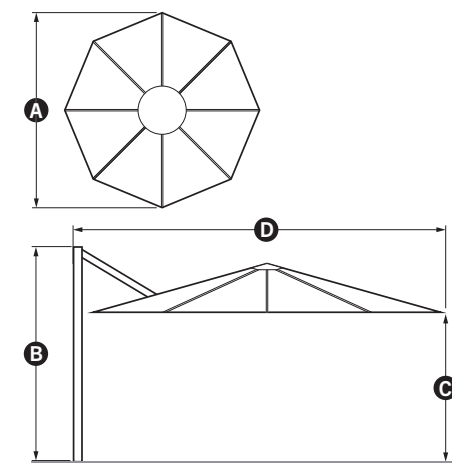
AG5A (Altrani, Pambula, Pandanus)

Umbrella Components

Check for all components before discarding packaging



Dimensions

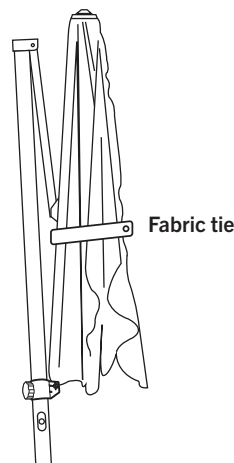


Ref	Description	Octagonal
A	Diameter	330cm
B	Mast Height	266cm
C	Clearance	215cm
D	Open Width	335cm

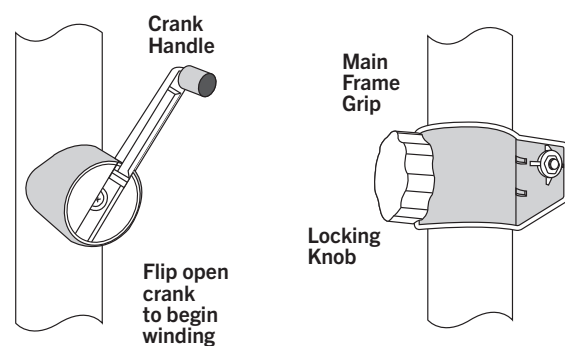
Note the umbrella dimensions.
Ensure there is sufficient clearance to raise, rotate and tilt the umbrella in the location where it will be installed.

See page 6 for related clearances information

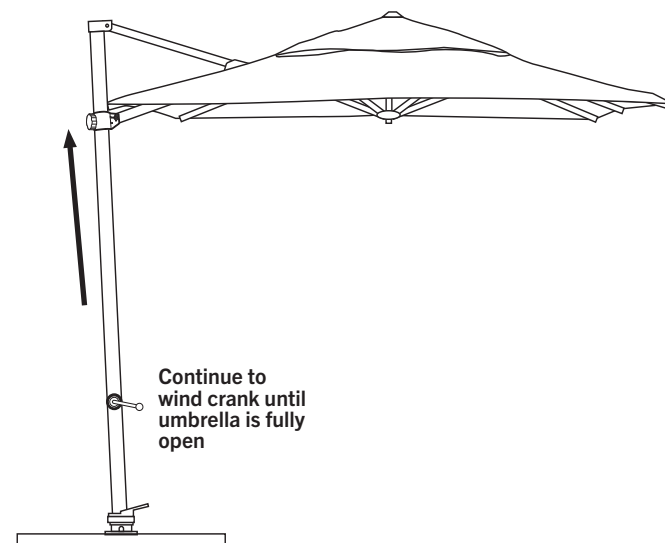
- Before opening the umbrella, release the fabric tie and allow the umbrella to unfurl slightly. **Ensure canopy fabric is not tangled with umbrella ribs.**



- Note the location of the crank and the Main Frame Grip.



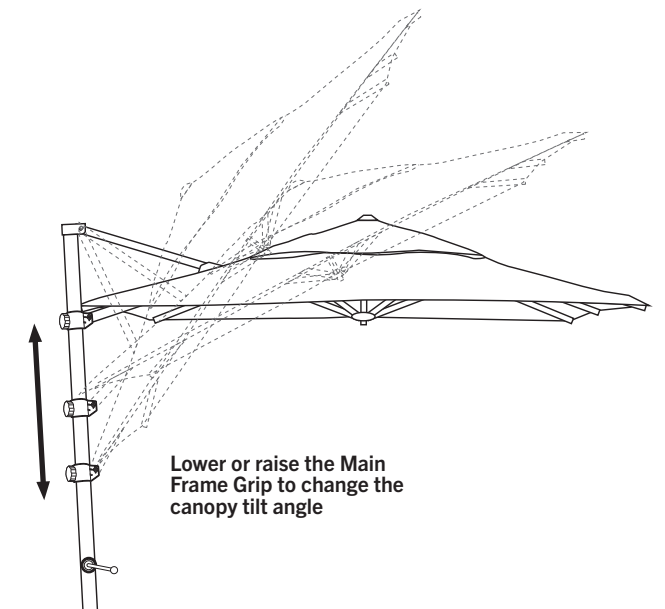
- To open the umbrella**
Untighten the locking knob on the Main Frame Grip. Slowly turn the crank handle in a clockwise direction; if the canopy does not begin to open, check that umbrella ribs are not tangled, or look for surrounding obstructions. **NEVER FORCE THE CRANK HANDLE.** Continue turning the crank while at the same time lifting the Main Frame Grip upwards to assist with raising the umbrella canopy. Gently tighten the locking knob once the umbrella is fully raised - to secure the Main Frame Grip in place.



- To change the canopy tilt angle**

To change the tilt angle of the umbrella canopy, untighten the locking knob and slide the Main Frame Grip up or down to set the preferred tilt angle.

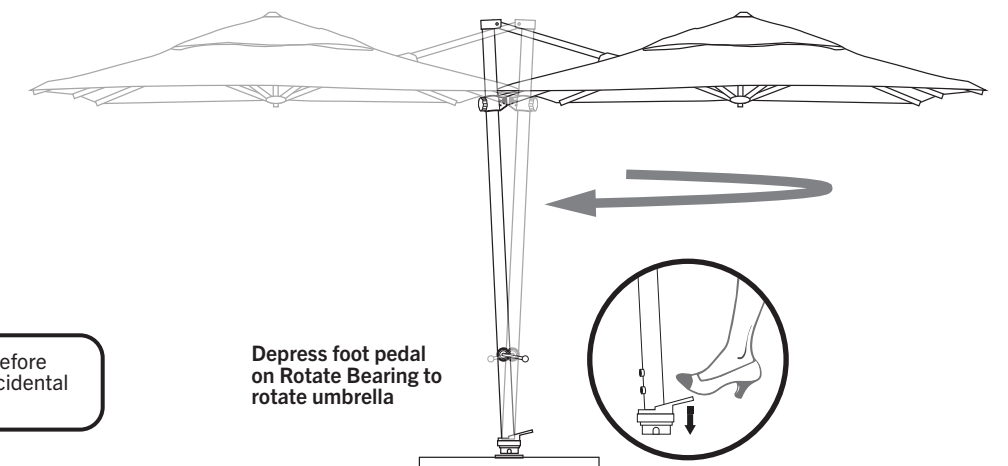
Note: The umbrella will catch more wind when tilted, so the tilt feature should be used with extreme caution.



- To rotate the umbrella**

To rotate the umbrella, gently step on the Rotate Bearing Foot Pedal and turn the frame to your desired position.

Releasing the foot pedal will lock the Rotate Bearing.



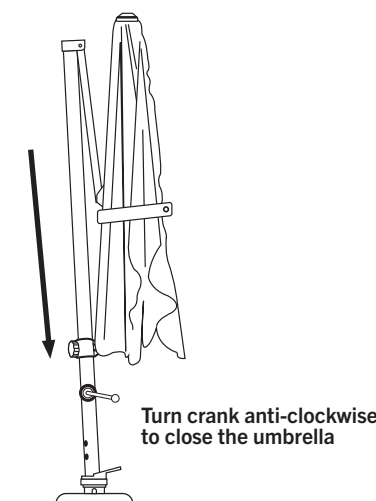
Shelta recommends closing the umbrella before rotating it if a breeze is present to avoid accidental damage to umbrella or nearby structures.

- To close the umbrella**

Untighten the locking knob on the Main Frame Grip.

Close the umbrella by turning the crank handle anti-clockwise and simultaneously lowering the Main Frame Grip.

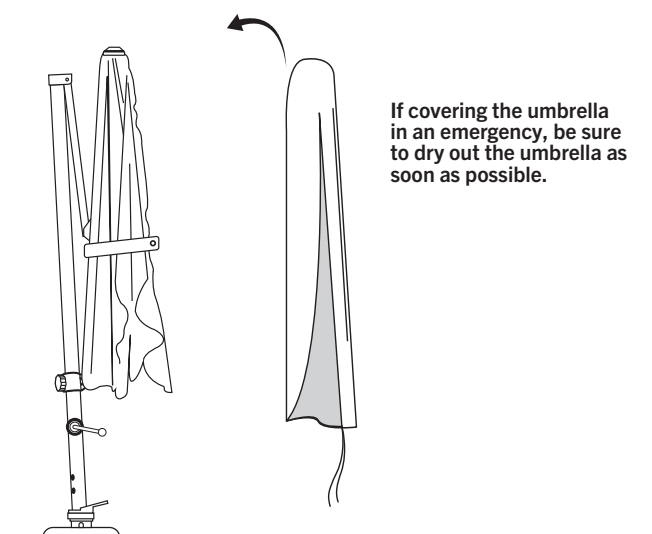
Gently tighten the locking knob on the Main Frame Grip to secure the frame.



Protective cover

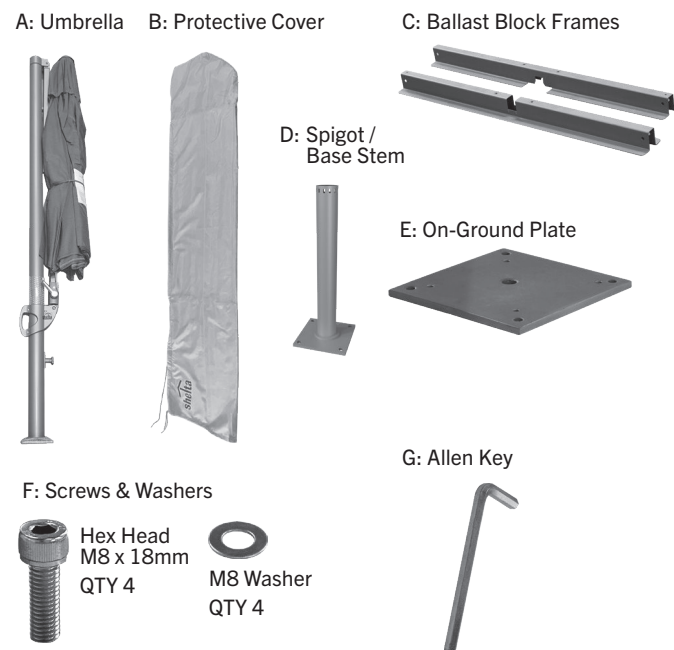
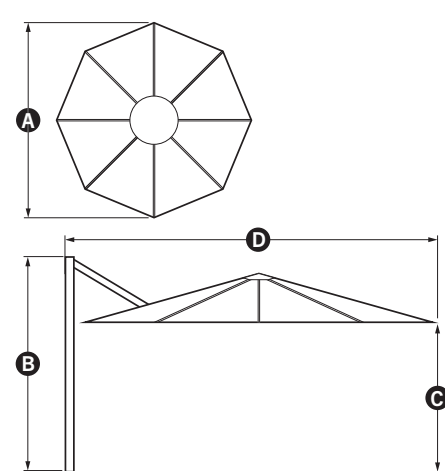
Fit the protective cover to the umbrella if it is not to be used for any period of time. This will protect the umbrella from the elements and help extend the life of the umbrella.

Always dry umbrella before covering.



Umbrella Components

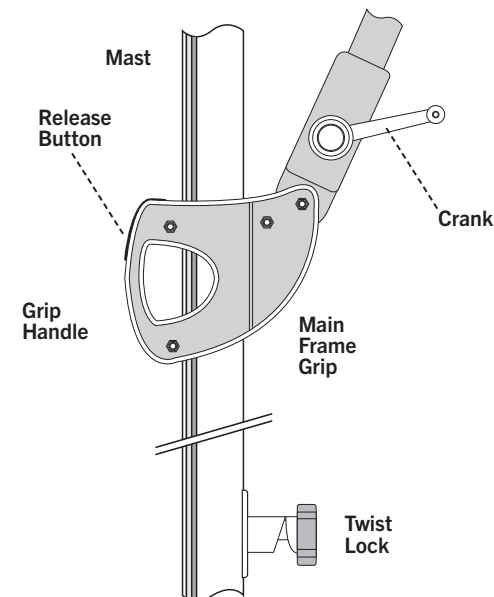
Check for all components before discarding packaging

**Dimensions**

Ref	Description	Octagonal	Note the umbrella dimensions. Ensure there is sufficient clearance to raise, rotate and tilt the umbrella in the location where it will be installed.
A	Canopy Diameter	300cm	
B	Mast Height	243cm	
C	Clearance	200cm	
D	Open Width	332cm	

See page 6 for related clearances information

- 1 Note location of Main Frame Grip on umbrella mast. Note the main parts.

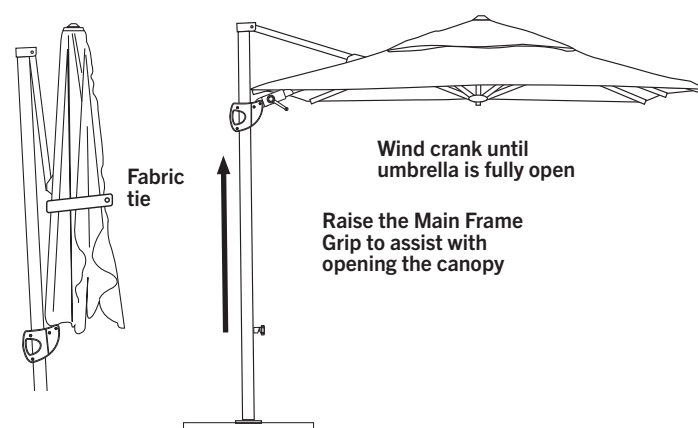


Pressing the Release Button on the Grip Handle allows the Main Frame Grip to move up or down. Releasing the button will lock the Main Frame Grip in place on the mast.

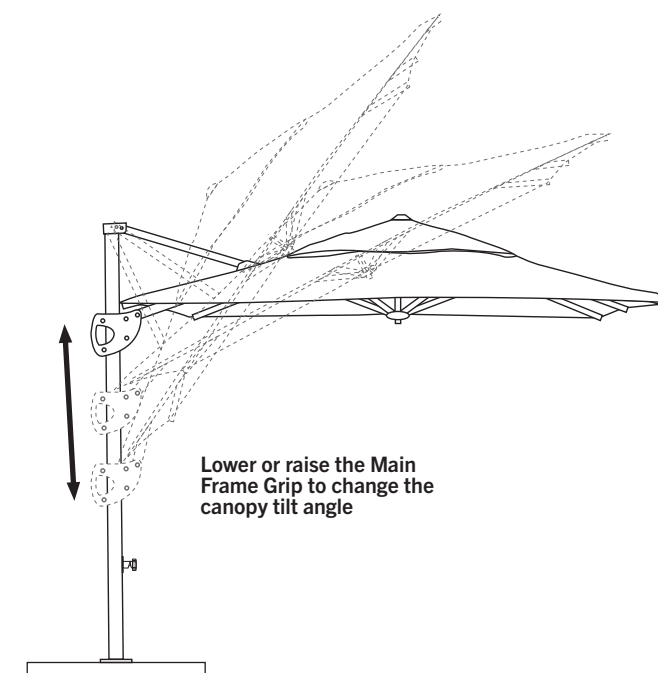
Note the Crank: Turn the crank clockwise to raise the umbrella; turn the crank anti clockwise to close the umbrella.

Note the Twist Lock on the Mast. This locks the rotation of the umbrella on the Spigot/Base Stem. Twist the knob clockwise to release; twist the knob anti-clockwise to engage/lock.

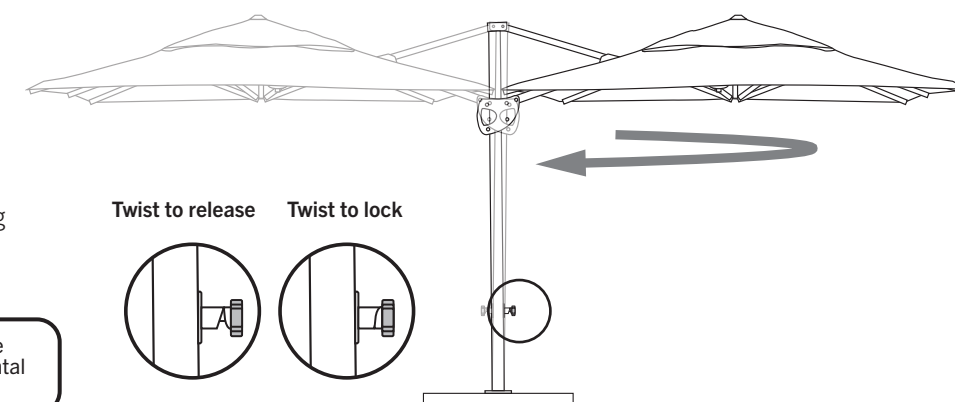
- 3 **To open the umbrella**
- Release the fabric tie and allow the umbrella to unfurl slightly. **Ensure canopy fabric is not tangled with umbrella ribs.** Press the Release Button on the Main Frame Grip and slowly turn the crank handle in a clockwise direction; if the canopy does not begin to open, check that umbrella ribs are not tangled, or look for surrounding obstructions. **NEVER FORCE THE CRANK HANDLE.**
- Continue turning the crank while at the same time lifting the Main Frame Grip upwards to assist with opening the umbrella canopy.
- Once the canopy is fully open, release the button on the Main Frame Grip. Move the grip up or down slightly until the locking pin engages with the detent on the mast.



- 4 **To change the canopy tilt angle**
- To change the tilt angle of the umbrella canopy, press the Release Button on the Main Frame Grip and move the grip up or down to set the preferred tilt angle. Release the button - move the grip up or down slightly until it engages on the mast.
- Note: The umbrella will catch more wind when tilted. Always use the tilt feature with caution.

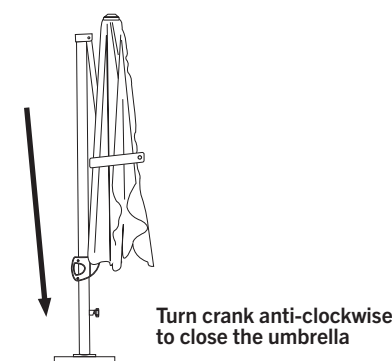


- 5 **To rotate the umbrella**
- To rotate the umbrella, gently turn the Twist Lock to release the internal locking pin on the mast.
- Rotate the umbrella to your desired position. Turn the Twist Lock to engage and then turn the umbrella mast slightly one way or the other until the internal locking pin fully engages on the spigot.

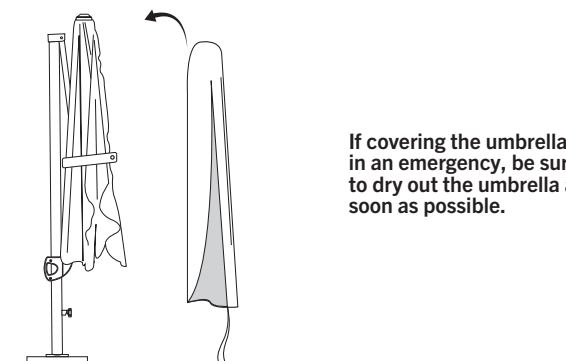


Shelta recommends closing the umbrella before rotating it if a breeze is present to avoid accidental damage to umbrella or nearby structures.

- 6 **To close the umbrella**
- Press the Release Button on the Main Frame Grip. Commence winding the crank handle in an anti-clockwise direction while simultaneously lowering the Main Frame Grip.
- Release the button to secure the Main Frame Grip in place on the mast. Move the grip up or down slightly until it fully engages on the mast.



- Protective cover**
- Fit the protective cover to the umbrella if it is not to be used for any period of time. This will protect the umbrella from the elements and help extend the life of the umbrella.
- Always dry umbrella before covering.**



7.3) How To Set Up & Use

AG5CII (Airlie)

Umbrella Components

Check for all components before discarding packaging

A: Umbrella B: Protective Cover

C: Ballast Block Frames

D: Spigot /
Base Stem

E: On-Ground Plate

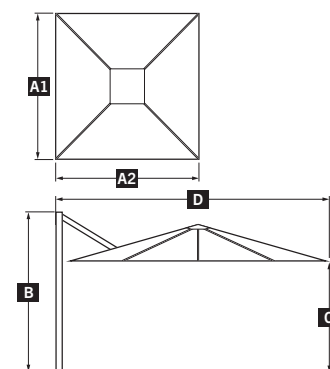
F: Screws & Washers

G: Allen Key

Hex Head
M8 x 18mm
QTY 4

M8 Washer
QTY 4

Dimensions



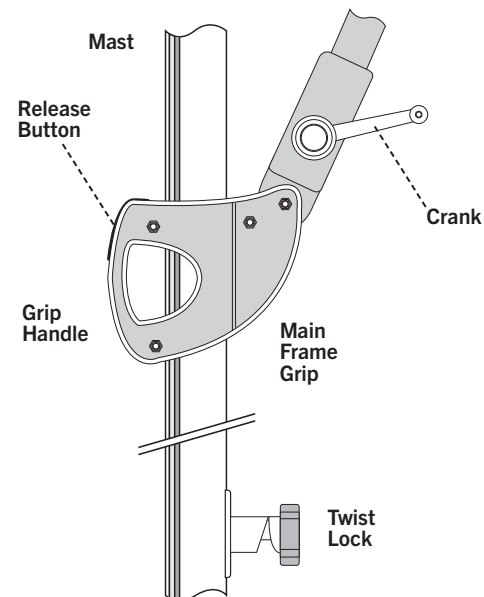
Note the umbrella dimensions.
Ensure there is sufficient clearance to raise, rotate and tilt the umbrella in the location where it will be installed.

Ref	Description	Square
A1	Canopy Size - Depth	250cm
A2	Canopy Size - Width	250cm
B	Mast Height	243cm
C	Clearance	206cm
D	Open Width	279cm

See page 6 for related clearances information

1

Note location of Main Frame Grip on umbrella mast. Note the main parts.



Pressing the Release Button on the Grip Handle allows the Main Frame Grip to move up or down. Releasing the button will lock the Main Frame Grip in place on the mast.

Note the Crank: Turn the crank clockwise to raise the umbrella; turn the crank anti clockwise to close the umbrella.

Note the Twist Lock on the Mast. This locks the rotation of the umbrella on the Spigot/Base Stem. Twist the knob clockwise to release; twist the knob anti-clockwise to engage/lock.

3

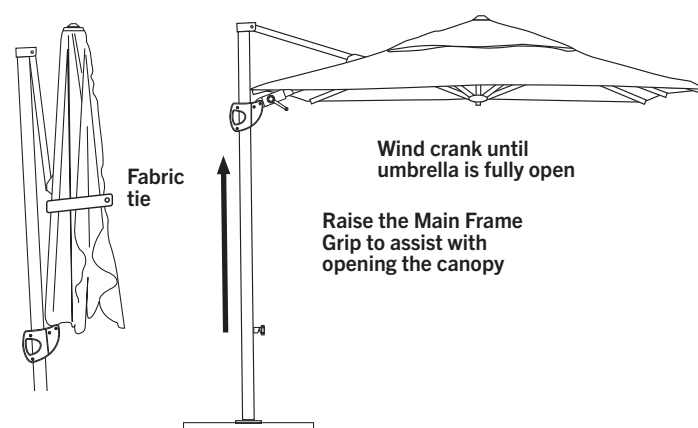
To open the umbrella

Release the fabric tie and allow the umbrella to unfurl slightly. **Ensure canopy fabric is not tangled with umbrella ribs.**

Press the Release Button on the Main Frame Grip and slowly turn the crank handle in a clockwise direction; if the canopy does not begin to open, check that umbrella ribs are not tangled, or look for surrounding obstructions. **NEVER FORCE THE CRANK HANDLE.**

Continue turning the crank while at the same time lifting the Main Frame Grip upwards to assist with opening the umbrella canopy.

Once the canopy is fully open, release the button on the Main Frame Grip. Move the grip up or down slightly until the locking pin engages with the detent on the mast.

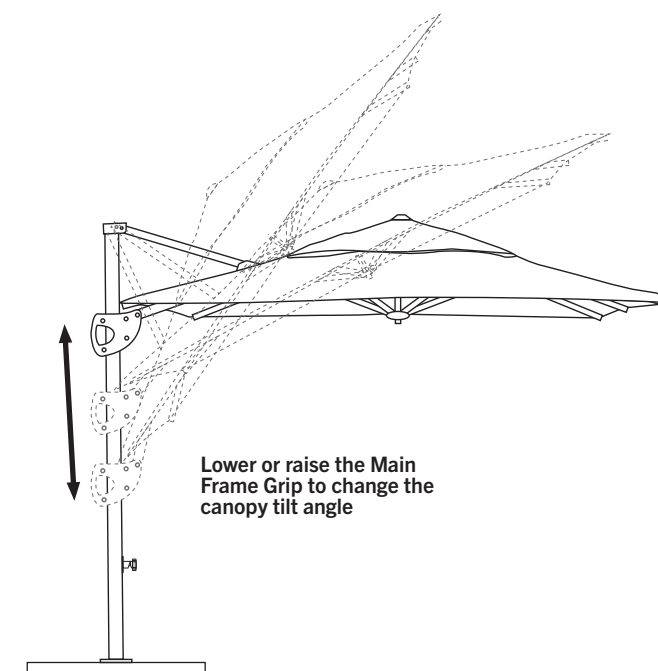


4

To change the canopy tilt angle

To change the tilt angle of the umbrella canopy, press the Release Button on the Main Frame Grip and move the grip up or down to set the preferred tilt angle. Release the button - move the grip up or down slightly until it engages on the mast.

Note: The umbrella will catch more wind when tilted. Always use the tilt feature with caution.

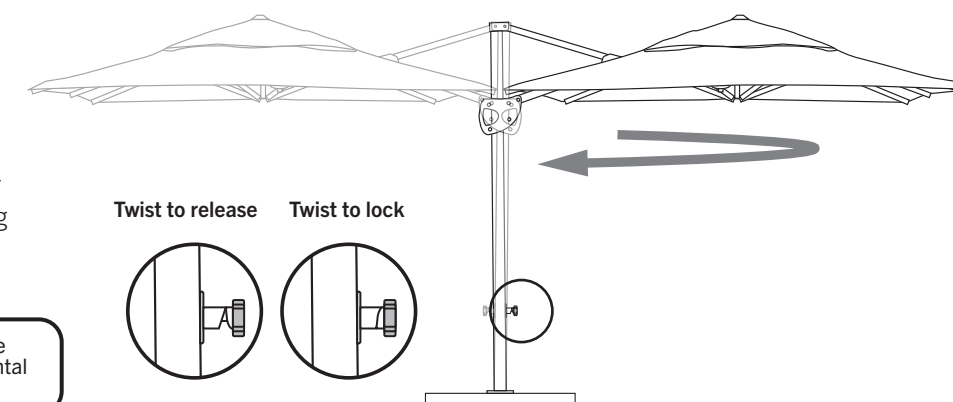


5

To rotate the umbrella

To rotate the umbrella, gently turn the Twist Lock to release the internal locking pin on the mast.

Rotate the umbrella to your desired position. Turn the Twist Lock to engage and then turn the umbrella mast slightly one way or the other until the internal locking pin fully engages on the spigot.



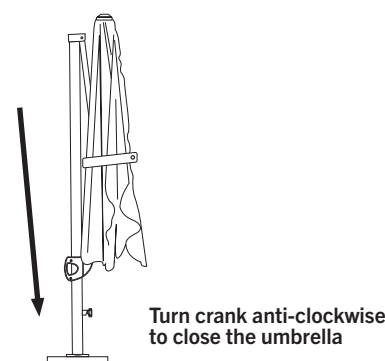
Shelta recommends closing the umbrella before rotating it if a breeze is present to avoid accidental damage to umbrella or nearby structures.

6

To close the umbrella

Press the Release Button on the Main Frame Grip. Commence winding the crank handle in an anti-clockwise direction while simultaneously lowering the Main Frame Grip.

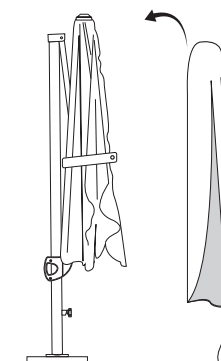
Release the button to secure the Main Frame Grip in place on the mast. Move the grip up or down slightly until it fully engages on the mast.



Protective cover

Fit the protective cover to the umbrella if it is not to be used for any period of time. This will protect the umbrella from the elements and help extend the life of the umbrella.

Always dry umbrella before covering.



If covering the umbrella in an emergency, be sure to dry out the umbrella as soon as possible.

7.4) How To Set Up & Use

AG5CD (Tivoli)

Umbrella Components

Check for all components before discarding packaging

A: Umbrella B: Protective Cover

C: Ballast Block Frames

D: Base Stem

E: On-Ground Plate

F: Screws & Washers

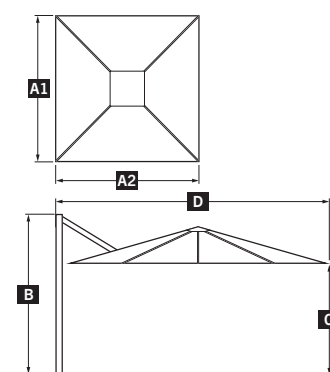
G: Screws

H: Allen Keys x 2

Hex Head
M8 x 20mm
QTY 4
M8 Washer
QTY 4

Hex Head
M3 x 10mm
QTY 4

Dimensions



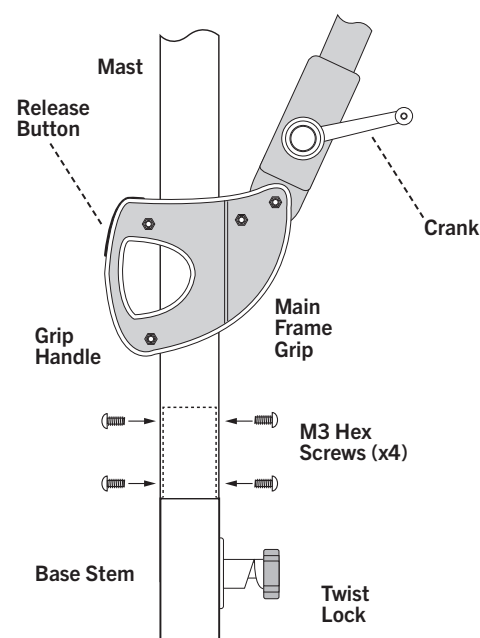
Note the umbrella dimensions. Ensure there is sufficient clearance to raise, rotate and tilt the umbrella in the location where it will be installed.

Ref	Description	Square
A1	Canopy Size - Depth	250cm
A2	Canopy Size - Width	250cm
B	Mast Height	244cm
C	Clearance	206cm
D	Open Width	279cm

See page 6 for related clearances information

1

Note location of Main Frame Grip on umbrella mast. Note the main parts.



Pressing the Release Button on the Grip Handle allows the Main Frame Grip to move up or down. Releasing the button will lock the Main Frame Grip in place on the mast.

Note the Crank: Turn the crank clockwise to raise the umbrella; turn the crank anti clockwise to close the umbrella.

Note the Twist Lock on the Mast. This locks the rotation of the umbrella on the Spigot/Base Stem. Twist the knob clockwise to release; twist the knob anti-clockwise to engage/lock.

3

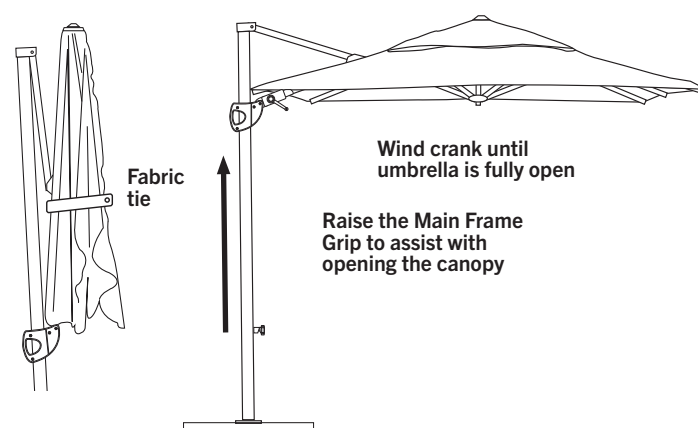
To open the umbrella

Release the fabric tie and allow the umbrella to unfurl slightly. **Ensure canopy fabric is not tangled with umbrella ribs.**

Press the Release Button on the Main Frame Grip and slowly turn the crank handle in a clockwise direction; if the canopy does not begin to open, check that umbrella ribs are not tangled, or look for surrounding obstructions. **NEVER FORCE THE CRANK HANDLE.**

Continue turning the crank while at the same time lifting the Main Frame Grip upwards to assist with opening the umbrella canopy.

Once the canopy is fully open, release the button on the Main Frame Grip. Move the grip up or down slightly until the locking pin engages with the detent on the mast.

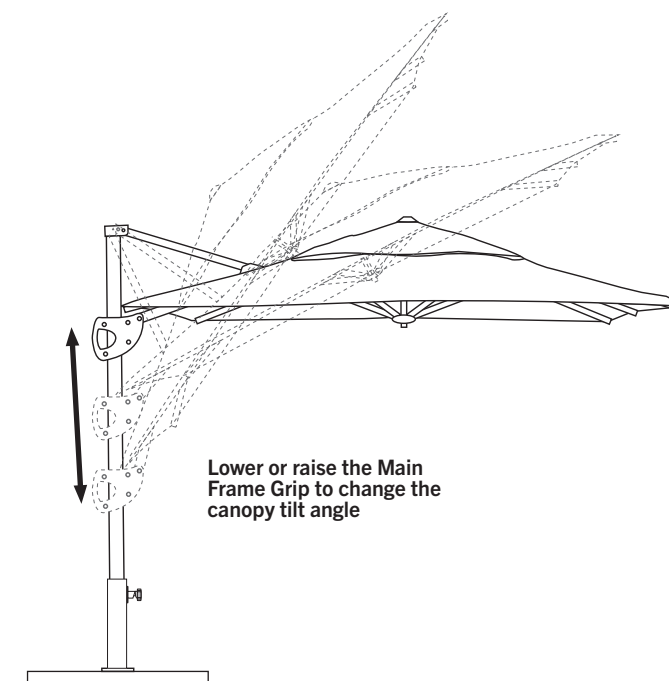


4

To change the canopy tilt angle

To change the tilt angle of the umbrella canopy, press the Release Button on the Main Frame Grip and move the grip up or down to set the preferred tilt angle. Release the button - move the grip up or down slightly until it engages on the mast.

Note: The umbrella will catch more wind when tilted. Always use the tilt feature with caution.



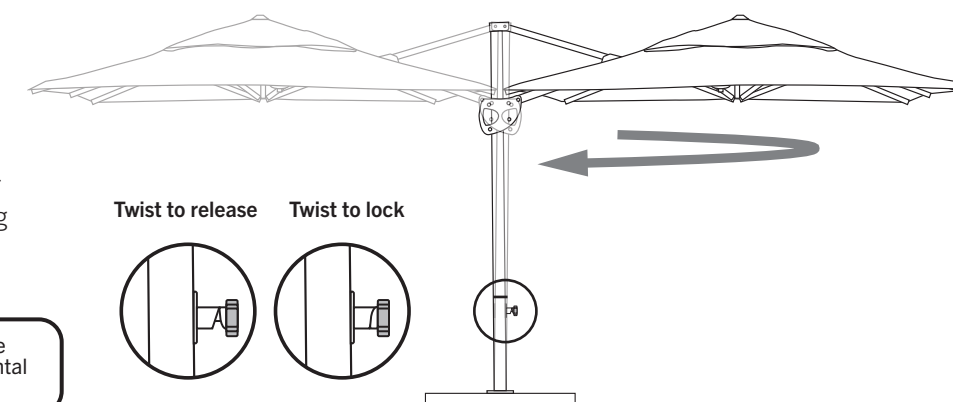
Lower or raise the Main Frame Grip to change the canopy tilt angle

5

To rotate the umbrella

To rotate the umbrella, gently turn the Twist Lock to release the internal locking pin on the mast.

Rotate the umbrella to your desired position. Turn the Twist Lock to engage and then turn the umbrella mast slightly one way or the other until the internal locking pin fully engages on the spigot.



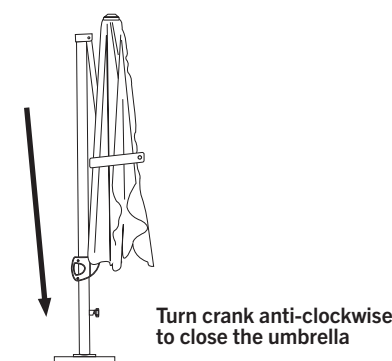
Shelta recommends closing the umbrella before rotating it if a breeze is present to avoid accidental damage to umbrella or nearby structures.

6

To close the umbrella

Press the Release Button on the Main Frame Grip. Commence winding the crank handle in an anti-clockwise direction while simultaneously lowering the Main Frame Grip.

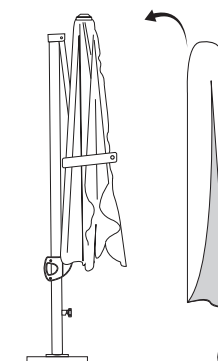
Release the button to secure the Main Frame Grip in place on the mast. Move the grip up or down slightly until it fully engages on the mast.



Protective cover

Fit the protective cover to the umbrella if it is not to be used for any period of time. This will protect the umbrella from the elements and help extend the life of the umbrella.

Always dry umbrella before covering.



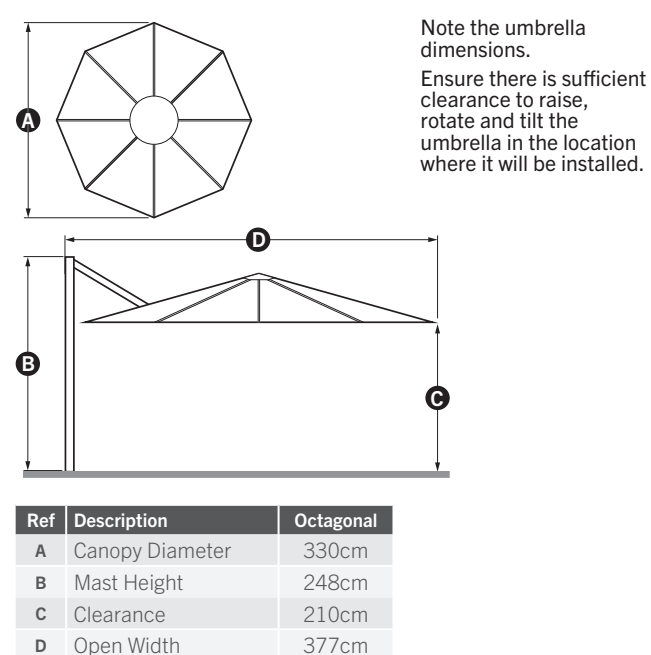
If covering the umbrella in an emergency, be sure to dry out the umbrella as soon as possible.

Umbrella Components

Check for all components before discarding packaging

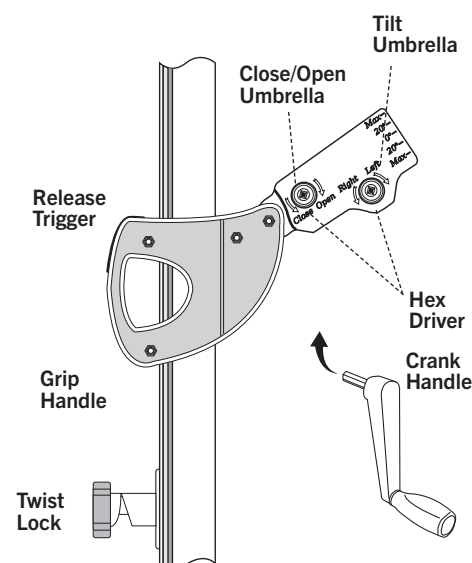


Dimensions



See page 6 for related clearances information

- 1 Note location of Main Frame Grip on umbrella mast. Note the main parts.



Pressing the Release Button on the Grip Handle allows the Main Frame Grip to move up or down. Releasing the button will lock the Main Frame Grip in place on the mast.

Note the Crank: Turn the crank clockwise to raise the umbrella; turn the crank anti clockwise to close the umbrella.

Note the Twist Lock on the Mast. This locks the rotation of the umbrella on the Spigot/Base Stem. Twist the knob clockwise to release; twist the knob anti-clockwise to engage/lock.

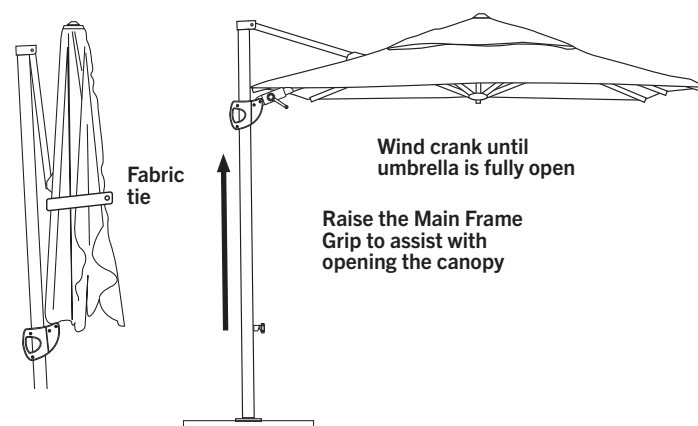
- 3 To open the umbrella

Release the fabric tie and allow the umbrella to unfurl slightly. **Ensure canopy fabric is not tangled with umbrella ribs.**

Press the Release Button on the Main Frame Grip and slowly turn the crank handle in a clockwise direction; if the canopy does not begin to open, check that umbrella ribs are not tangled, or look for surrounding obstructions. **NEVER FORCE THE CRANK HANDLE.**

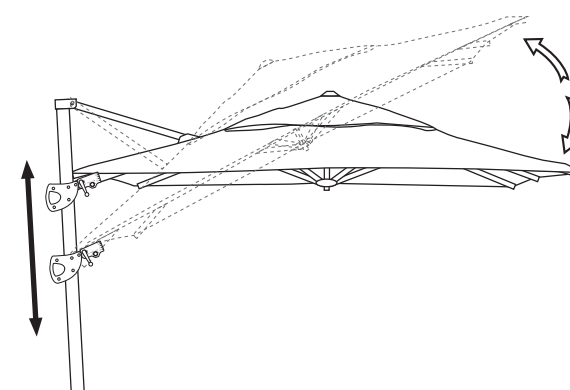
Continue turning the crank while at the same time lifting the Main Frame Grip upwards to assist with opening the umbrella canopy.

Once the canopy is fully open, release the button on the Main Frame Grip. Move the grip up or down slightly until the locking pin engages with the detent on the mast.



- 4 To change the canopy tilt angle

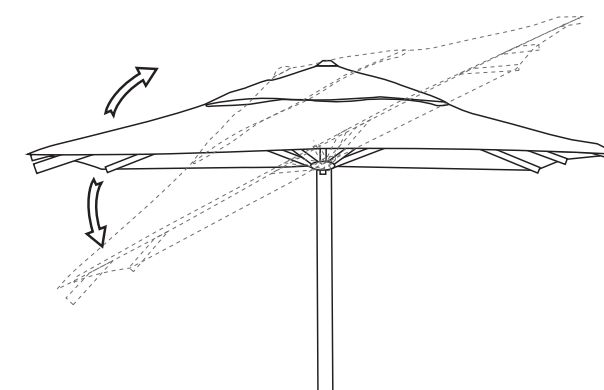
The canopy on this umbrella can be tilted along either the (A) Primary axis or (B) Secondary axis.



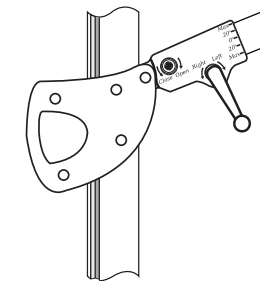
To change the primary tilt angle of the umbrella canopy, squeeze the trigger on the Main Frame Grip and move the grip up or down to set the preferred tilt angle.

Release the trigger - move the grip up or down slightly until it engages on the mast.

Note: The umbrella will catch more wind when tilted. Always use the tilt feature with caution.



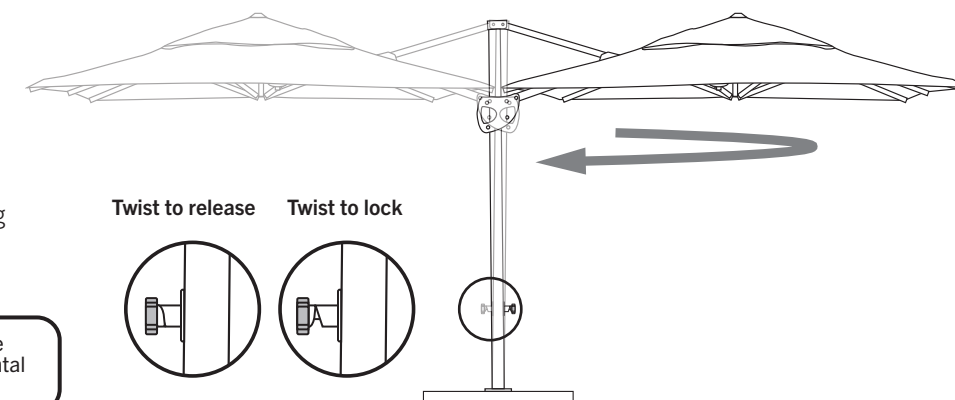
To change the **secondary tilt angle** of the umbrella canopy, insert the crank handle to hex driver on the Main Frame Grip and turn the crank either direction to tilt the umbrella to the left or right.



- 5 To rotate the umbrella

To rotate the umbrella, gently turn the Twist Lock to release the internal locking pin on the mast.

Rotate the umbrella to your desired position. Turn the Twist Lock to engage and then turn the umbrella mast slightly one way or the other until the internal locking pin fully engages on the spigot.

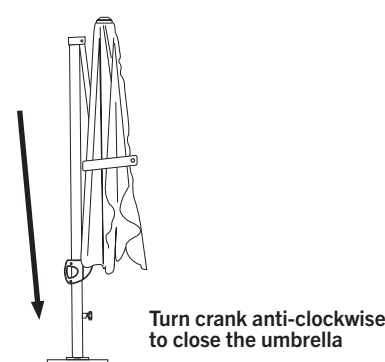


Shelta recommends closing the umbrella before rotating it if a breeze is present to avoid accidental damage to umbrella or nearby structures.

- 6 To close the umbrella

Press the Release Button on the Main Frame Grip. Commence winding the crank handle in an anti-clockwise direction while simultaneously lowering the Main Frame Grip.

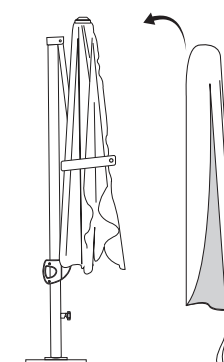
Release the button to secure the Main Frame Grip in place on the mast. Move the grip up or down slightly until it fully engages on the mast.



Protective cover

Fit the protective cover to the umbrella if it is not to be used for any period of time. This will protect the umbrella from the elements and help extend the life of the umbrella.

Always dry umbrella before covering.



If covering the umbrella in an emergency, be sure to dry out the umbrella as soon as possible.

- 7 Shelly - Integrated LED Lighting

Refer to page 46 for instructions on how to use the integrated LED lighting system.

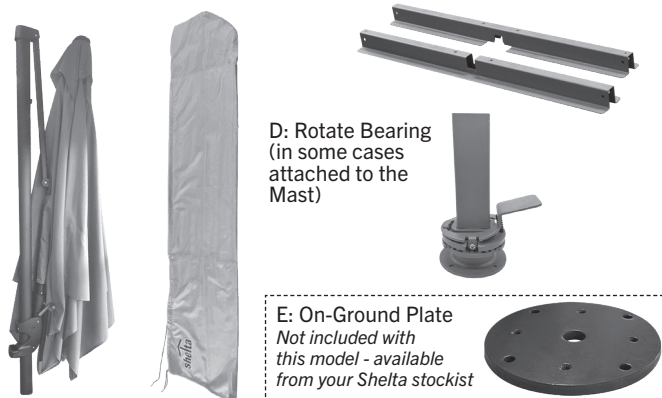
7.6) How To Set Up & Use

AG15A (Seychelles)

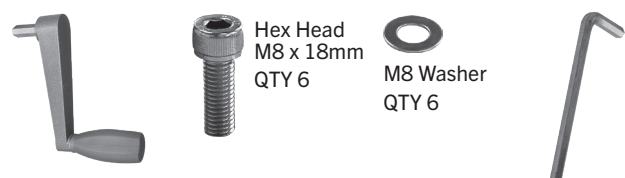
Umbrella Components

Check for all components before discarding packaging

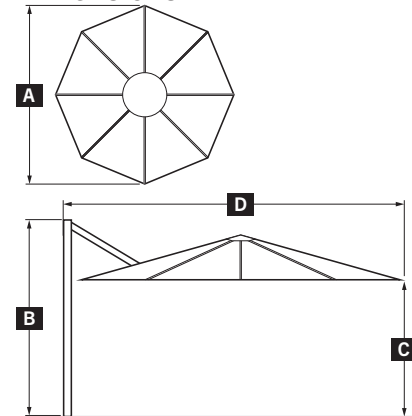
A: Umbrella B: Protective Cover C: Ballast Block Frames



F: Crank Handle G: Screws & Washers H: Large Allen Key



Dimensions

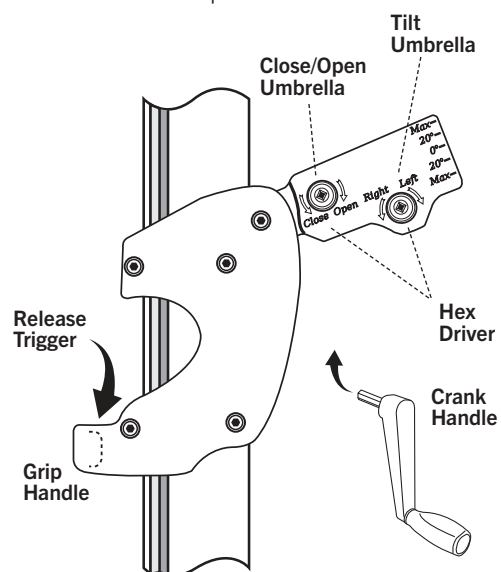


Note the umbrella dimensions.
Ensure there is sufficient clearance to raise, rotate and tilt the umbrella in the location where it will be installed.

Ref	Description	Octagonal
A	Canopy Diameter	300cm
B	Mast Height	244cm
C	Clearance	208cm
D	Open Width	341cm

See page 6 for related clearances information

- Note the location of the Main Frame Grip on the umbrella mast and note the main parts.



Squeezing the trigger on the grip handle allows the Main Frame Grip to move up or down. Releasing the trigger will lock the Main Frame Grip in place.

Note the two hex drivers into which the crank handle can be inserted.

The driver marked **Close - Open** is for opening and closing the umbrella.

The driver marked **Right - Left** is for tilting the umbrella canopy, with degrees of tilt indicated.

- To open the umbrella

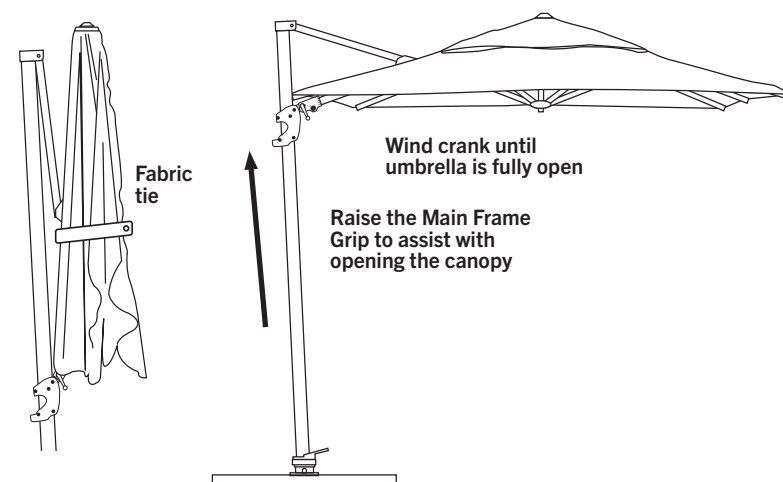
Release the fabric tie and allow the umbrella to unfurl slightly. **Ensure canopy fabric is not tangled with umbrella ribs.**

Insert crank handle into the (Open-Close) hex driver.

Squeeze the trigger on the Main Frame Grip and slowly turn the crank handle in a clockwise direction; if the canopy does not begin to open, check that umbrella ribs are not tangled, or look for surrounding obstructions. **NEVER FORCE THE CRANK HANDLE.**

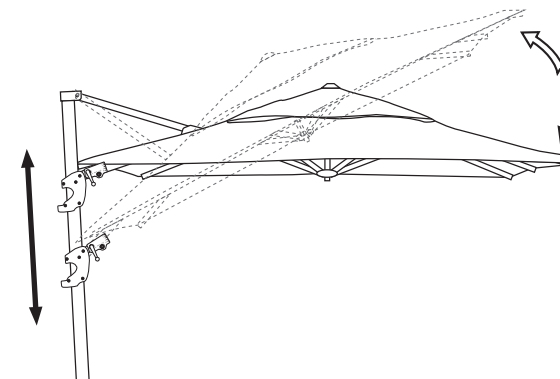
Continue turning the crank while at the same time lifting the Main Frame Grip upwards to assist with opening the umbrella canopy.

Once the canopy is fully open, release the trigger on the Main Frame Grip. Move the grip up or down slightly until the locking pin engages with the detent on the mast.



- To change the canopy tilt angle

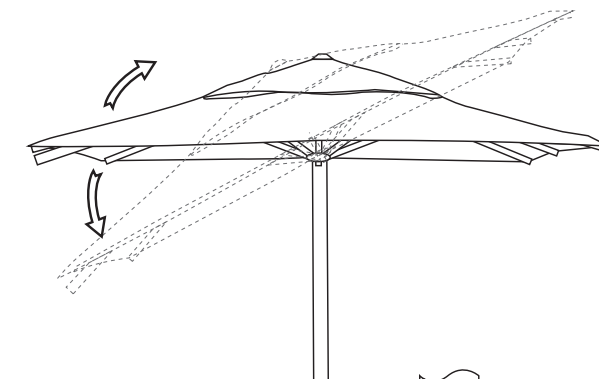
The canopy on this umbrella can be tilted along either the (A) **Primary axis** or (B) **Secondary axis**.



To change the primary tilt angle of the umbrella canopy, squeeze the trigger on the Main Frame Grip and move the grip up or down to set the preferred tilt angle.

Release the trigger - move the grip up or down slightly until it engages on the mast.

Note: The umbrella will catch more wind when tilted. Always use the tilt feature with caution.



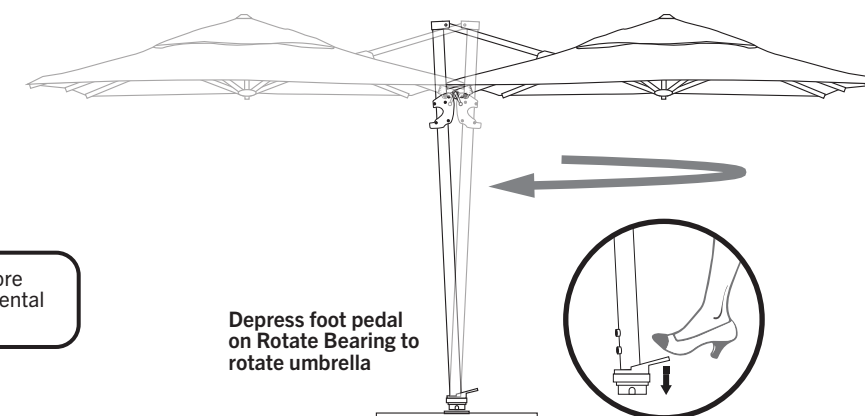
To change the **secondary tilt angle** of the umbrella canopy, insert the crank handle to hex driver on the Main Frame Grip and turn the crank either direction to tilt the umbrella to the left or right.

- To rotate the umbrella

To rotate the umbrella, gently step on the Rotate Bearing Foot Pedal and turn the frame to your desired position.

Releasing the foot pedal will lock the Rotate Bearing.

Shelta recommends closing the umbrella before rotating it if a breeze is present to avoid accidental damage to umbrella or nearby structures.



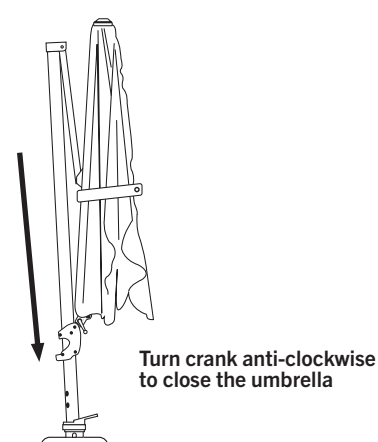
Depress foot pedal on Rotate Bearing to rotate umbrella

- To close the umbrella

Insert the crank handle into the hex driver on the Main Frame Grip.

Close the umbrella by turning the crank handle anti-clockwise and simultaneously lowering the Main Frame Grip.

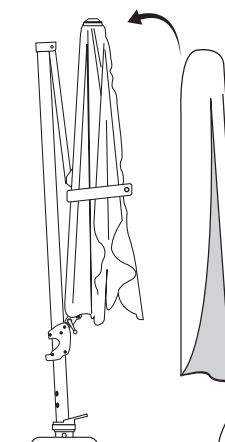
Release the trigger to secure the Main Frame Grip in place on the mast.



Protective cover

Fit the protective cover to the umbrella if it is not to be used for any period of time. This will protect the umbrella from the elements and help extend the life of the umbrella.

Always dry umbrella before covering.



If covering the umbrella in an emergency, be sure to dry out the umbrella as soon as possible.

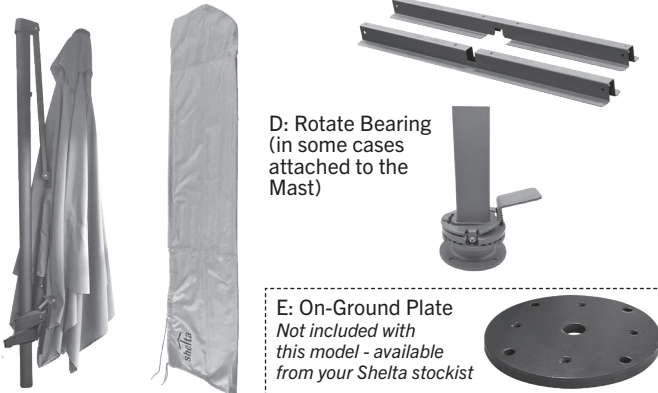
7.7) How To Set Up & Use

AG15AII (Emery - with LED lighting, Alba)

Umbrella Components

Check for all components before discarding packaging

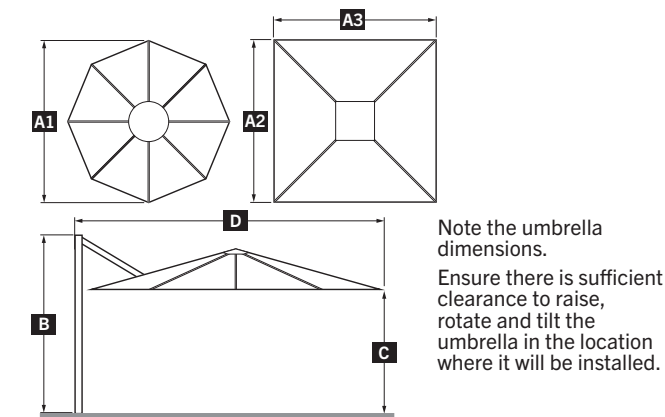
A: Umbrella B: Protective Cover C: Ballast Block Frames



F: Crank Handle G: Screws & Washers H: Allen Key



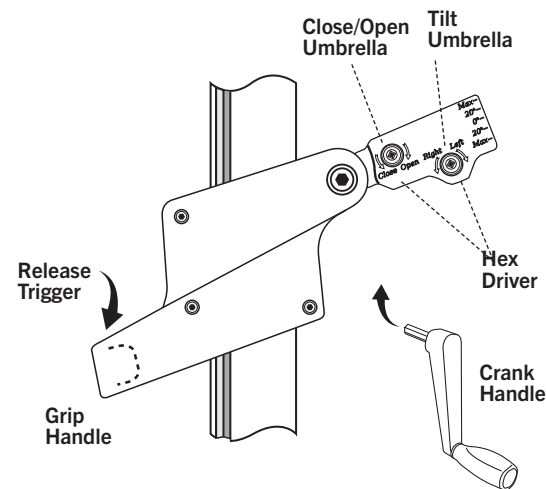
Dimensions



Ref	Description	Octagonal	Octagonal	Square
A1	Canopy Diameter	330cm	350cm	-
A2	Canopy - Width	-	-	301cm
A3	Canopy - Depthh	-	-	301cm
B	Mast Height	244cm	249cm	244cm
C	Clearance	209cm	209cm	209cm
D	Open Width	369cm	385cm	338cm

See page 6 for related clearances information

- 1 Note the location of the Main Frame Grip on the umbrella mast and note the main parts.



Squeezing the trigger on the grip handle allows the Main Frame Grip to move up or down. Releasing the trigger will lock the Main Frame Grip in place.

Note the two hex drivers into which the crank handle can be inserted.

The driver marked **Close - Open** is for opening and closing the umbrella.

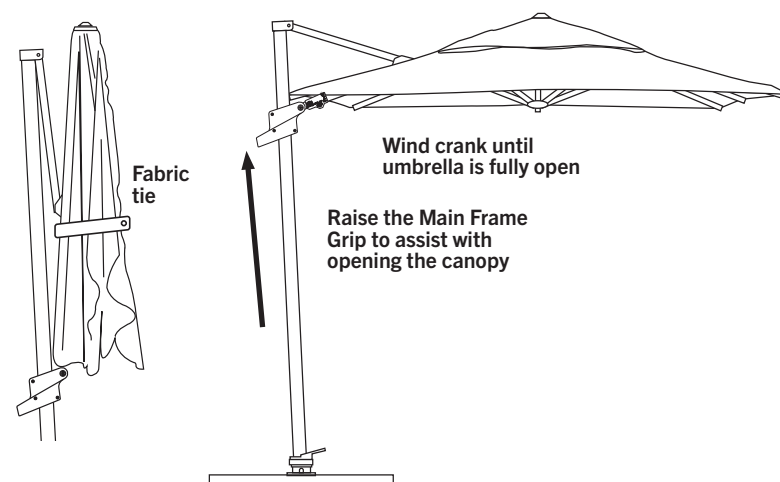
The driver marked Right - Left is for tilting the umbrella canopy, with degrees of tilt indicated.

- 3 **To open the umbrella**
Release the fabric tie and allow the umbrella to unfurl slightly. **Ensure canopy fabric is not tangled with umbrella ribs.** Insert crank handle into the (Open-Close) hex driver.

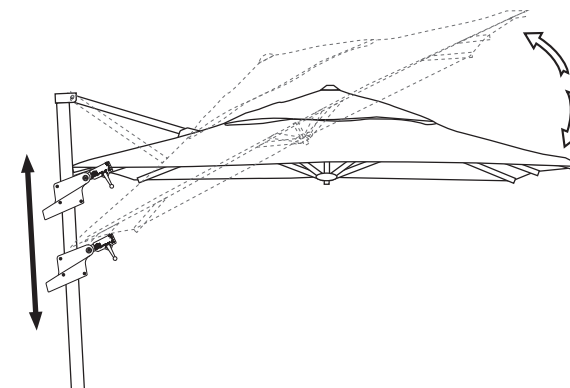
Squeeze the trigger on the Main Frame Grip and slowly turn the crank handle in a clockwise direction; if the canopy does not begin to open, check that umbrella ribs are not tangled, or look for surrounding obstructions. **NEVER FORCE THE CRANK HANDLE.**

Continue turning the crank while at the same time lifting the Main Frame Grip upwards to assist with opening the umbrella canopy.

Once the canopy is fully open, release the trigger on the Main Frame Grip. Move the grip up or down slightly until the locking pin engages with the detent on the mast.



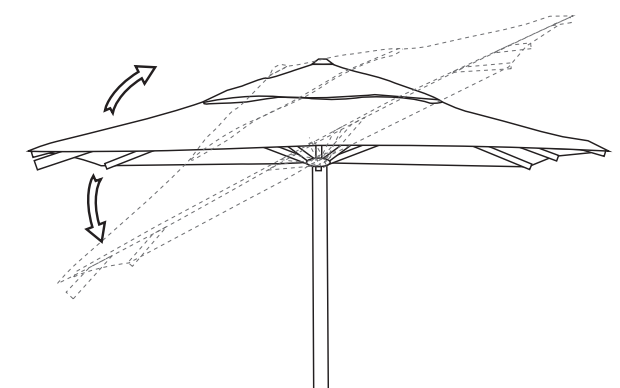
- 4 **To change the canopy tilt angle**
The canopy on this umbrella can be tilted along either the (A) **Primary axis** or (B) **Secondary axis**.



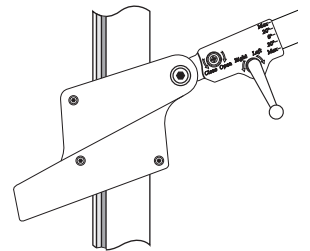
To change the primary tilt angle of the umbrella canopy, squeeze the trigger on the Main Frame Grip and move the grip up or down to set the preferred tilt angle.

Release the trigger - move the grip up or down slightly until it engages on the mast.

Note: The umbrella will catch more wind when tilted. Always use the tilt feature with caution.



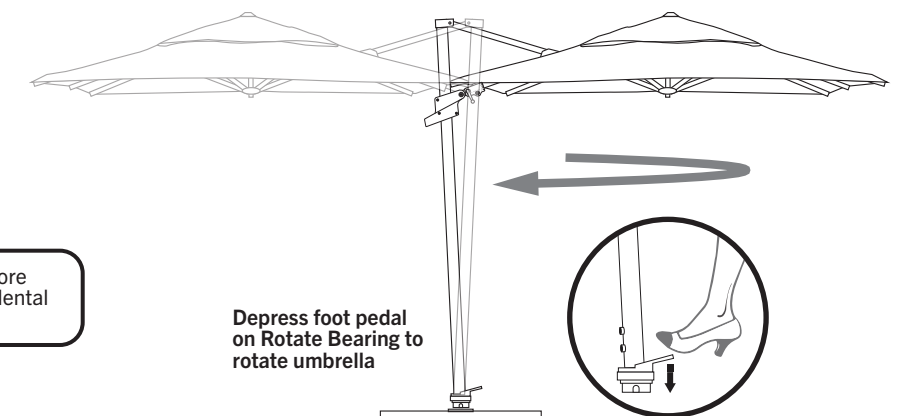
To change the **secondary tilt angle** of the umbrella canopy, insert the crank handle to hex driver on the Main Frame Grip and turn the crank either direction to tilt the umbrella to the left or right.



- 5 **To rotate the umbrella**
To rotate the umbrella, gently step on the Rotate Bearing Foot Pedal and turn the frame to your desired position.

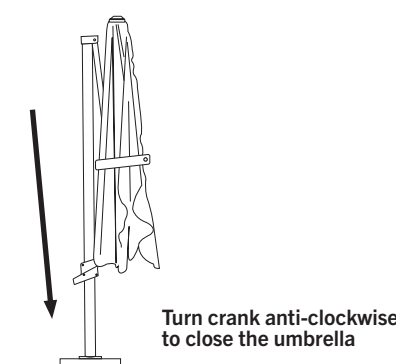
Releasing the foot pedal will lock the Rotate Bearing.

Shelta recommends closing the umbrella before rotating it if a breeze is present to avoid accidental damage to umbrella or nearby structures.



Depress foot pedal on Rotate Bearing to rotate umbrella

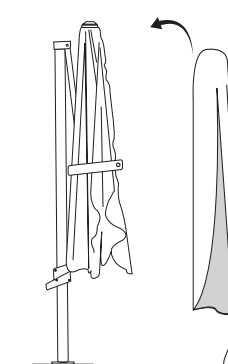
- 6 **To close the umbrella**
Insert the crank handle into the hex driver on the Main Frame Grip.
Close the umbrella by turning the crank handle anti-clockwise and simultaneously lowering the Main Frame Grip.
Release the trigger to secure the Main Frame Grip in place on the mast.



Protective cover

Fit the protective cover to the umbrella if it is not to be used for any period of time. This will protect the umbrella from the elements and help extend the life of the umbrella.

Always dry umbrella before covering.



If covering the umbrella in an emergency, be sure to dry out the umbrella as soon as possible.

- 7 **Emery - Integrated LED Lighting**
Refer to page 46 for instructions on how to use the integrated LED lighting system.

Umbrella Components

Check for all components before discarding packaging

A: Umbrella B: Protective Cover C: Ballast Block Frames



D: Rotate Bearing
(in some cases
attached to the
Mast)

E: On-Ground Plate

H: Allen Keys x 2

F: Crank Handle

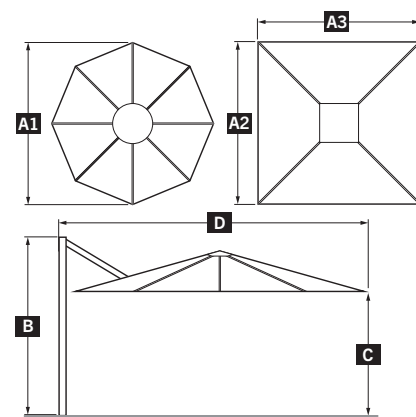
G: Screws & Washers



Hex Head
M8 x 20mm
QTY 4

M8 Washer
QTY 4

Dimensions



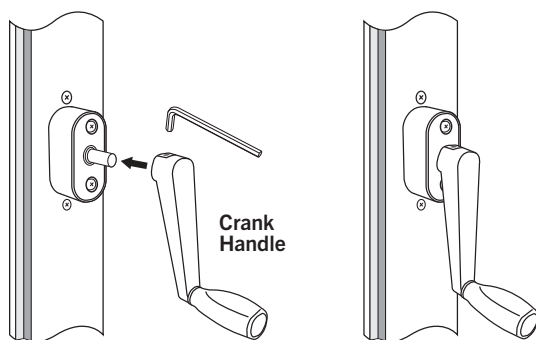
Note the umbrella
dimensions.
Ensure there is sufficient
clearance to raise,
rotate and tilt the
umbrella in the location
where it will be installed.

Ref	Description	Octagonal	Square
A1	Canopy Diameter	350cm	-
A2	Canopy Size - Depth	-	300cm
A3	Canopy Size - Width	-	300cm
B	Mast Height	267cm	272cm
C	Clearance	208cm	212cm
D	Open Width	368cm	318cm

See page 6 for related clearances information

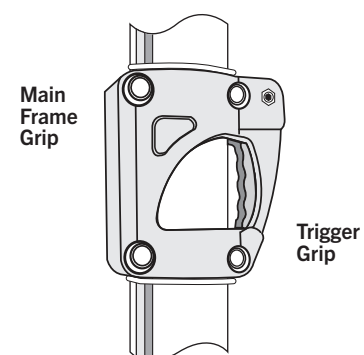
1

Attach the Crank Handle to the spindle on the crank housing. Tighten firmly with the small Allen key.



2

Note the location of the Main Frame Grip on the umbrella mast. Squeezing the trigger will allow you to raise or lower the grip.



3

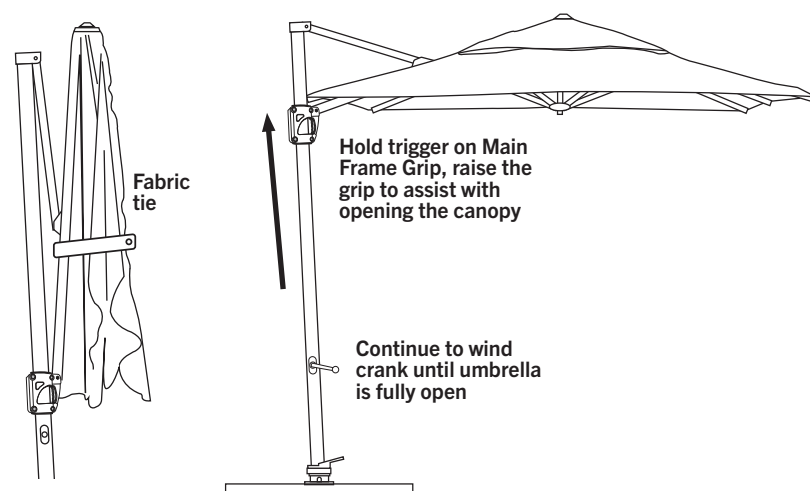
To open the umbrella

Release the fabric tie and allow the umbrella to unfurl slightly. **Ensure canopy fabric is not tangled with umbrella ribs.**

Squeeze the trigger on the Main Frame Grip and slowly turn the crank handle in a clockwise direction; if the canopy does not begin to open, check that umbrella ribs are not tangled, or look for surrounding obstructions. **NEVER FORCE THE CRANK HANDLE.**

Continue turning the crank while at the same time lifting the Main Frame Grip upwards to assist with raising the umbrella canopy.

Once the canopy is fully open, release the trigger on the Main Frame Grip. Move the grip up or down slightly until the locking pin engages with the detent on the mast.

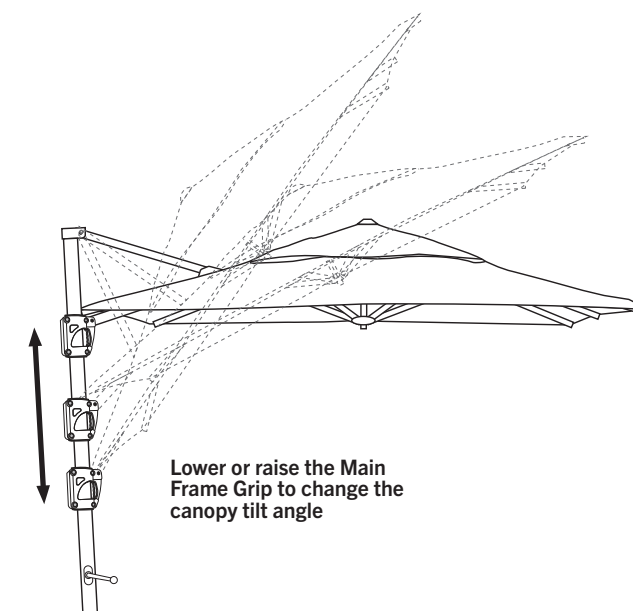


4

To change the canopy tilt angle

To change the tilt angle of the umbrella canopy, squeeze the trigger on the Main Frame Grip and move the grip up or down to set the preferred tilt angle. Release the trigger - move the grip up or down slightly until it engages on the mast.

Note: The umbrella will catch more wind when tilted. Always use the tilt feature with caution.



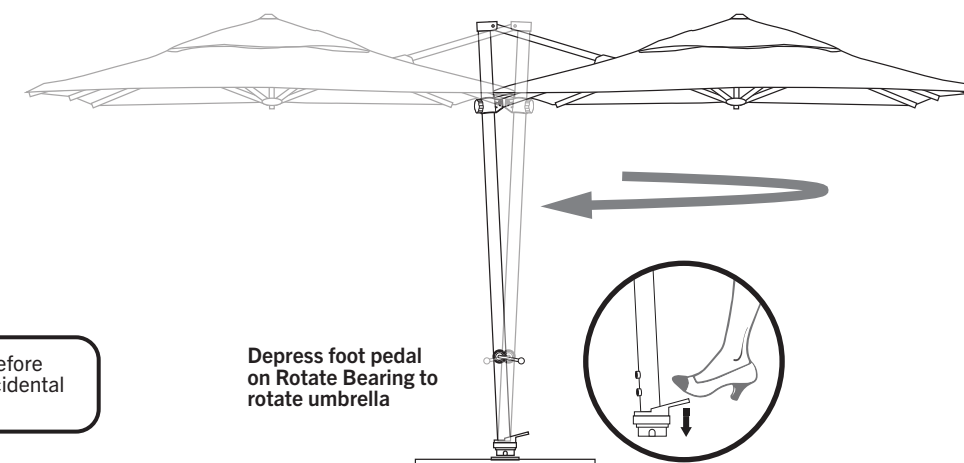
Lower or raise the Main
Frame Grip to change the
canopy tilt angle

5

To rotate the umbrella

To rotate the umbrella, gently step on the Rotate Bearing Foot Pedal and turn the frame to your desired position.

Releasing the foot pedal will lock the Rotate Bearing.



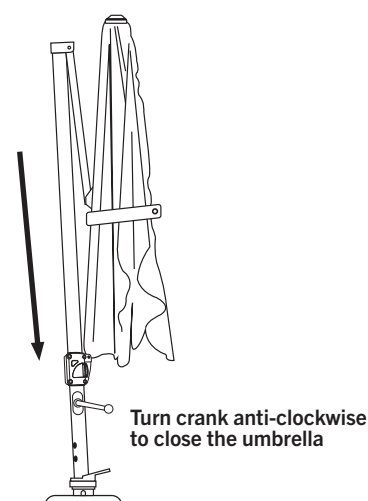
Depress foot pedal
on Rotate Bearing to
rotate umbrella

6

To close the umbrella

Close the umbrella by squeezing the trigger on the Main Frame Grip and turning the crank handle anti-clockwise, while simultaneously lowering the Main Frame Grip.

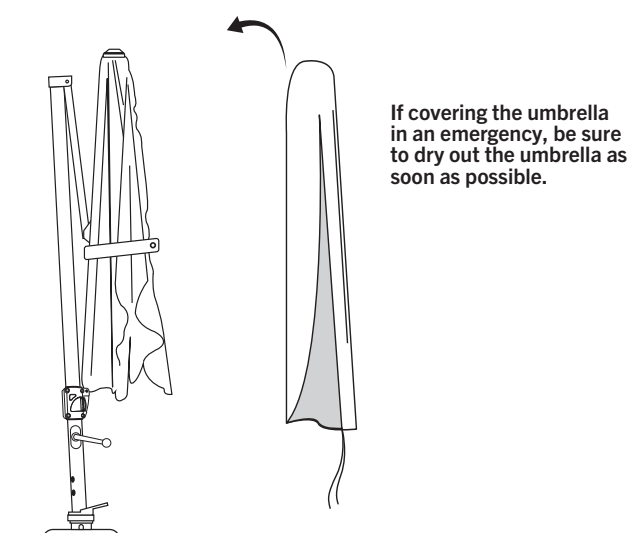
Release the trigger on the Main Frame Grip to secure the frame on the mast.



Protective cover

Fit the protective cover to the umbrella if it is not to be used for any period of time. This will protect the umbrella from the elements and help extend the life of the umbrella.

Always dry umbrella before covering.



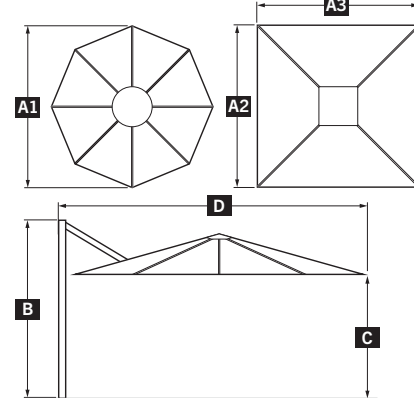
If covering the umbrella
in an emergency, be sure
to dry out the umbrella as
soon as possible.

Umbrella Components

Check for all components before discarding packaging



Dimensions

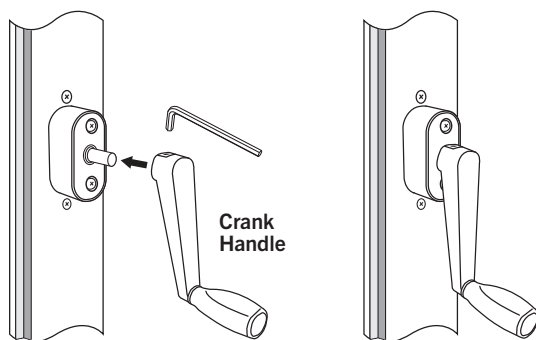


Note the umbrella dimensions.
Ensure there is sufficient clearance to raise, rotate and tilt the umbrella in the location where it will be installed.

Ref	Description	Octagonal	Square
A1	Canopy Diameter	330cm	-
A2	Canopy Size - Depth	-	280cm
A3	Canopy Size - Width	-	280cm
B	Mast Height	245cm	265cm
C	Clearance	210cm	206cm
D	Open Width	362cm	302cm

See page 6 for related clearances information

- 1 Attach the Crank Handle to the spindle on the crank housing. Tighten the locking screw firmly with the small Allen key.

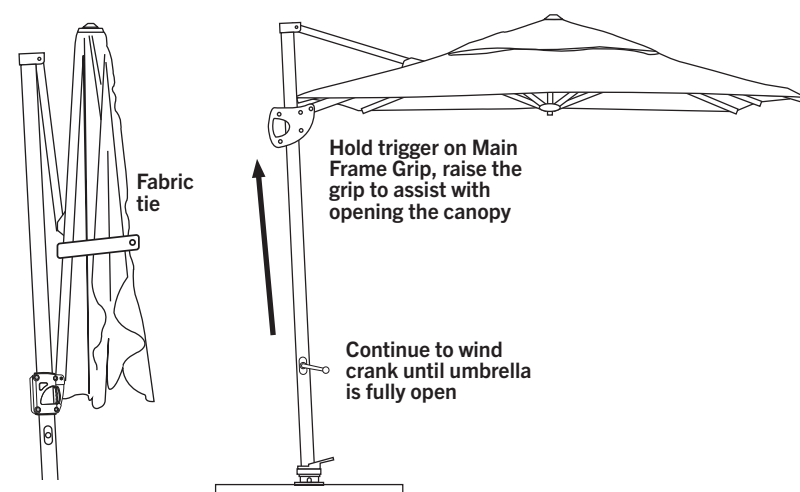


- 3 To open the umbrella
Release the fabric tie and allow the umbrella to unfurl slightly. **Ensure canopy fabric is not tangled with umbrella ribs.**

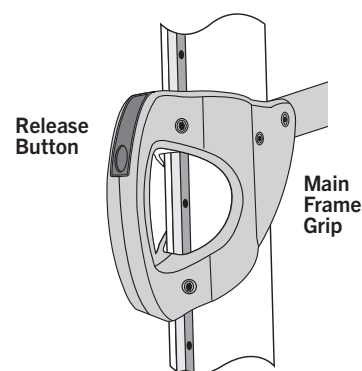
Depress the release button on the Main Frame Grip and slowly turn the crank handle in a clockwise direction; if the canopy does not begin to open, check that umbrella ribs are not tangled, or look for surrounding obstructions. **NEVER FORCE THE CRANK HANDLE.**

Continue turning the crank while at the same time lifting the Main Frame Grip upwards to assist with raising the umbrella canopy.

Once the canopy is fully open, release the button on the Main Frame Grip. Move the grip up or down slightly until the locking pin engages with the detent on the mast.



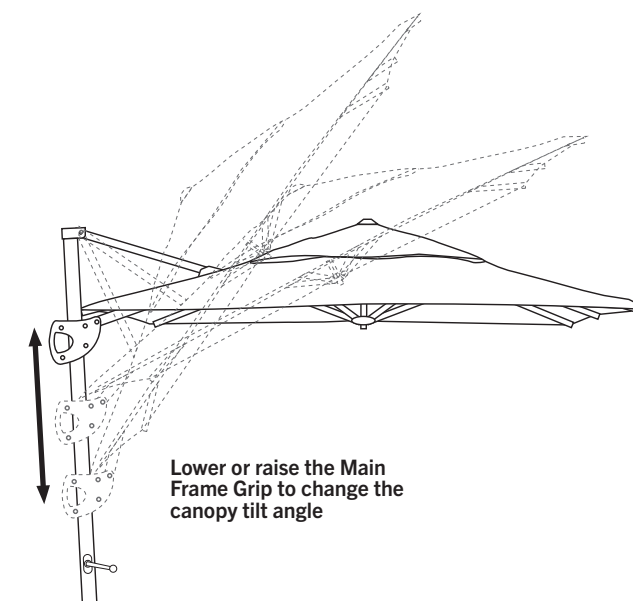
- 2 Note the location of the Main Frame Grip on the umbrella mast. Depressing the button will allow the grip to move freely, up or down.



- 4 To change the canopy tilt angle

To change the tilt angle of the umbrella canopy, press the release button on the Main Frame Grip and move the grip up or down to set the preferred tilt angle. Release the button - move the grip up or down slightly until it engages on the mast.

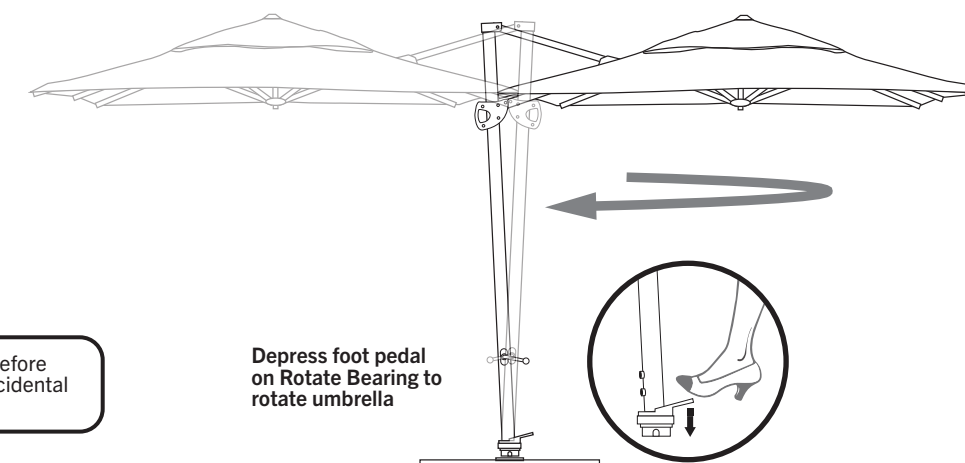
Note: The umbrella will catch more wind when tilted. Always use the tilt feature with caution.



- 5 To rotate the umbrella

To rotate the umbrella, gently step on the Rotate Bearing Foot Pedal and turn the frame to your desired position.

Releasing the foot pedal will lock the Rotate Bearing.



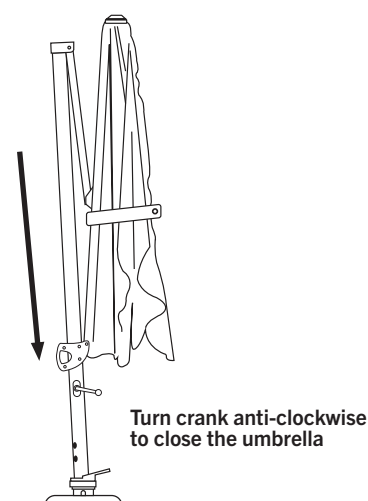
Shelta recommends closing the umbrella before rotating it if a breeze is present to avoid accidental damage to umbrella or nearby structures.

- 6 To close the umbrella

Press the release button on the Main Frame Grip.

Start turning the crank handle anti-clockwise while simultaneously lowering the Main Frame Grip.

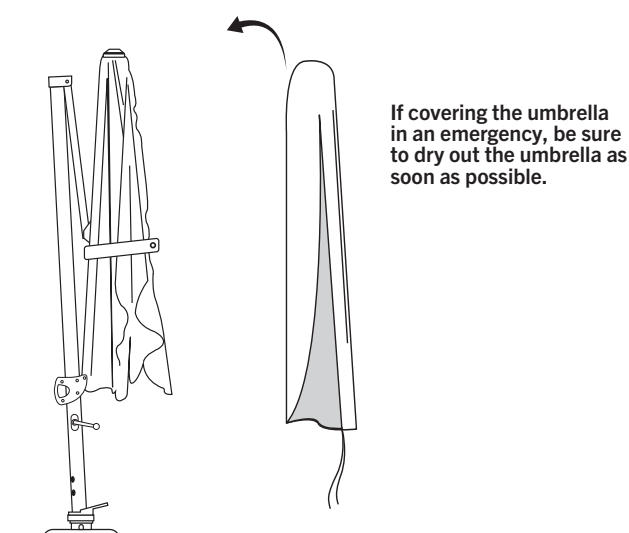
Once the umbrella is lowered, move the grip up or down slightly until it engages with the detent on the mast to secure it.



Protective cover

Fit the protective cover to the umbrella if it is not to be used for any period of time. This will protect the umbrella from the elements and help extend the life of the umbrella.

Always dry umbrella before covering.



Umbrella Components

Check for all components before discarding packaging

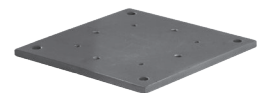
A: Umbrella B: Protective Cover C: Ballast Block Frames



D: Rotate Bearing
(in some cases
attached to the
Mast)



E: On-Ground Plate



F: Crank Handle



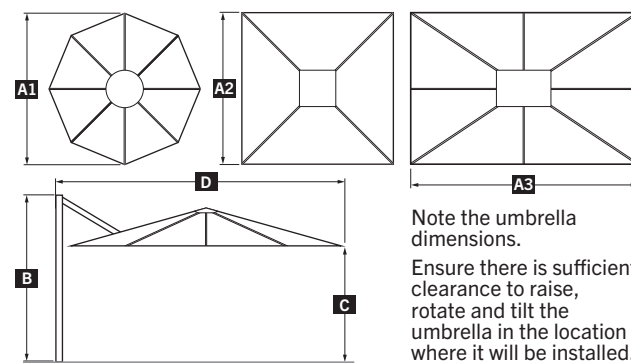
G: Screws & Washers



H: Small Allen Key
Large Allen Key



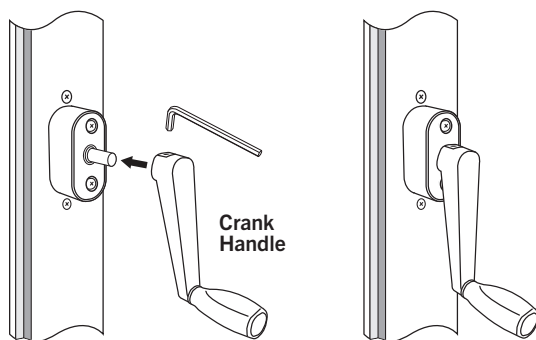
Dimensions



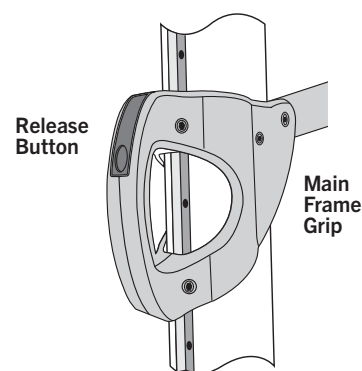
Ref	Description	Octagonal	Octagonal	Square	Rectangular
A1	Canopy Diameter	350cm	380cm	-	-
A2	Canopy Size - Depth	-	-	330cm	300cm
A3	Canopy Size - Width	-	-	330cm	400cm
B	Mast Height	374cm	283cm	275cm	264cm
C	Clearance	209cm	209cm	209cm	209cm
D	Open Width	369cm	395cm	356cm	323cm

See page 6 for related clearances information

- 1 Attach the Crank Handle to the spindle on the crank housing. Tighten the locking screw firmly with the small Allen key.



- 2 Note the location of the Main Frame Grip on the umbrella mast. Depressing the button will allow the grip to move freely, up or down.



- 3 To open the umbrella

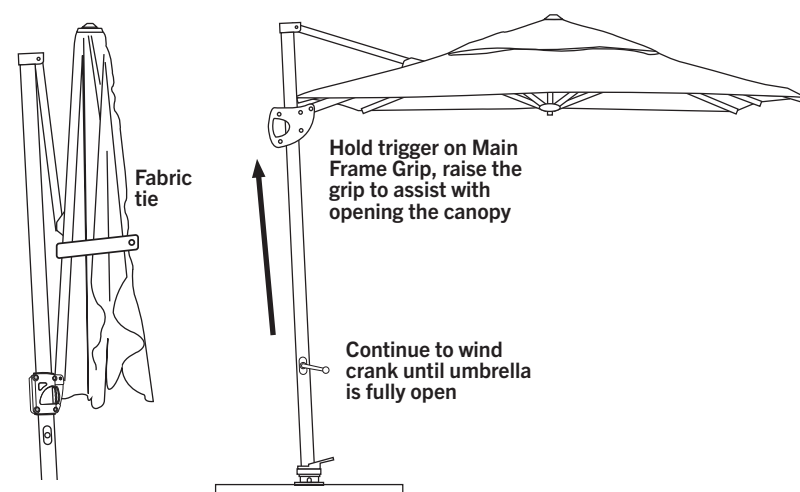
Release the fabric tie and allow the umbrella to unfurl slightly. **Ensure canopy fabric is not tangled with umbrella ribs.**

Depress the release button on the Main Frame Grip and Slowly turn the crank handle in a clockwise direction; if the canopy does not begin to open, check that umbrella ribs are not tangled, or look for surrounding obstructions.

NEVER FORCE THE CRANK HANDLE.

Continue turning the crank while at the same time lifting the Main Frame Grip upwards to assist with raising the umbrella canopy.

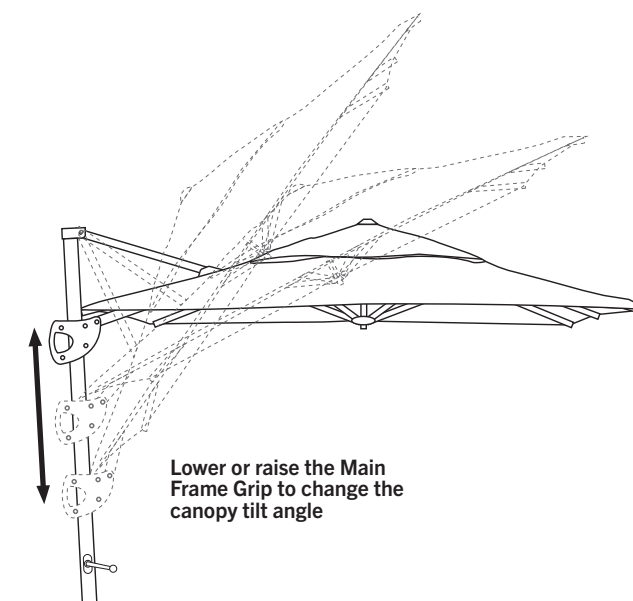
Once the canopy is fully open, release the button on the Main Frame Grip. Move the grip up or down slightly until the locking pin engages with the detent on the mast.



- 4 To change the canopy tilt angle

To change the tilt angle of the umbrella canopy, press the release button on the Main Frame Grip and move the grip up or down to set the preferred tilt angle. Release the button - move the grip up or down slightly until it engages on the mast.

Note: The umbrella will catch more wind when tilted. Always use the tilt feature with caution.

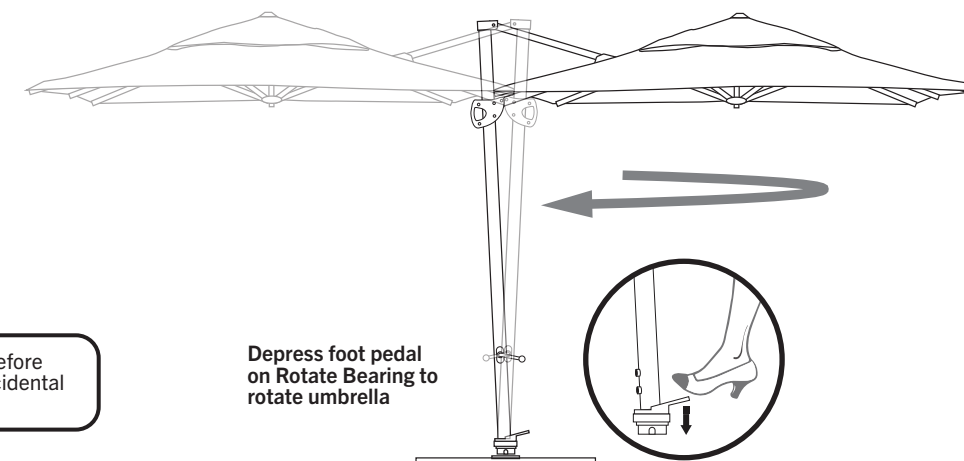


Lower or raise the Main Frame Grip to change the canopy tilt angle

- 5 To rotate the umbrella

To rotate the umbrella, gently step on the Rotate Bearing Foot Pedal and turn the frame to your desired position.

Releasing the foot pedal will lock the Rotate Bearing.



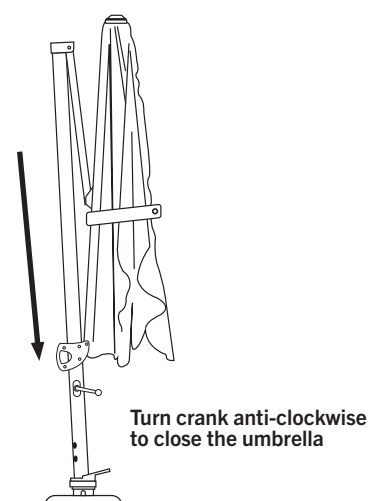
Shelta recommends closing the umbrella before rotating it if a breeze is present to avoid accidental damage to umbrella or nearby structures.

- 6 To close the umbrella

Press the release button on the Main Frame Grip.

Start turning the crank handle anti-clockwise while simultaneously lowering the Main Frame Grip.

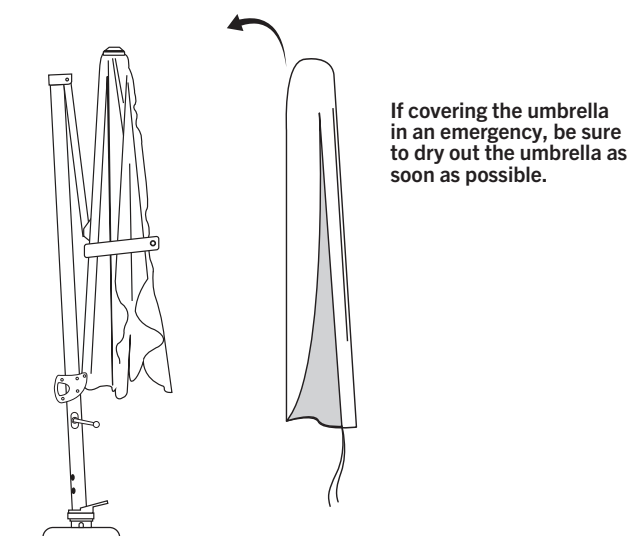
Once the umbrella is lowered, move the grip up or down slightly until it engages with the detent on the mast to secure it.



Protective cover

Fit the protective cover to the umbrella if it is not to be used for any period of time. This will protect the umbrella from the elements and help extend the life of the umbrella.

Always dry umbrella before covering.



If covering the umbrella in an emergency, be sure to dry out the umbrella as soon as possible.

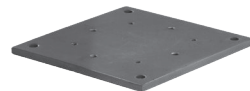
Umbrella Components

Check for all components before discarding packaging

A: Umbrella B: Protective Cover C: Ballast Block Frames

D: Rotate Bearing
(in some cases
attached to the
Mast)

E: On-Ground Plate



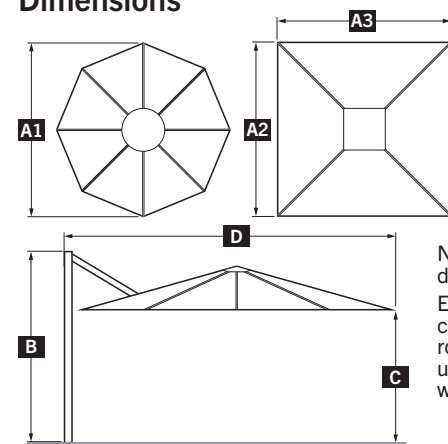
F: Crank Handle



H: Screws & Washers



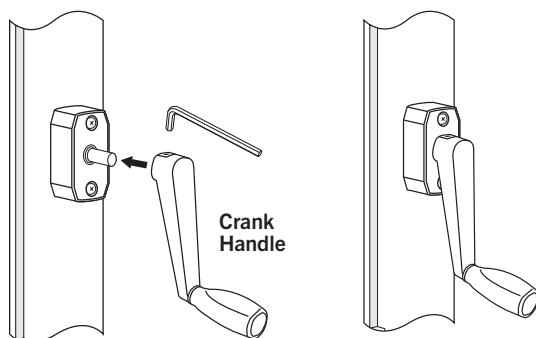
I: Allen Keys x 3

G: Counter Sunk
M8 x 25mm
Screw QTY 4M8 Washer
QTY 4**Dimensions**Note the umbrella
dimensions.
Ensure there is sufficient
clearance to raise,
rotate and tilt the
umbrella in the location
where it will be installed.

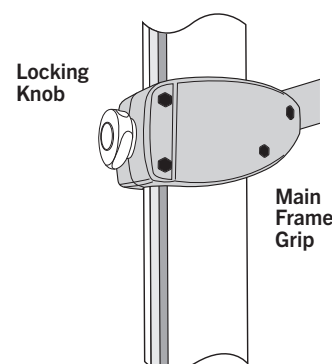
Ref	Description	Octagonal	Square
A1	Canopy Diameter	350cm	-
A2	Canopy Size - Depth	-	300cm
A3	Canopy Size - Width	-	300cm
B	Mast Height	274cm	265cm
C	Clearance	206cm	207cm
D	Open Width	374cm	320cm

See page 6 for related clearances information

- 1** Attach the Crank Handle to the spindle on the crank housing. Tighten the locking screw firmly with the small Allen key.



- 2** Note the location of the Main Frame Grip and locking knob on the umbrella mast.



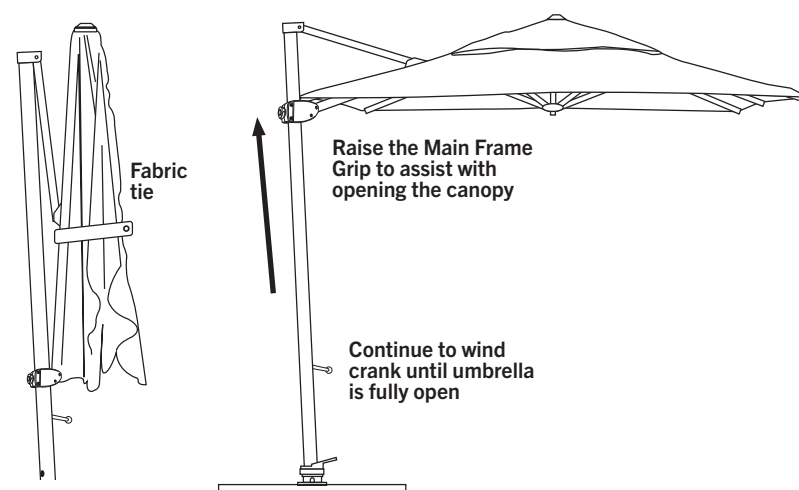
- 3 To open the umbrella**
Release the fabric tie and allow the umbrella to unfurl slightly. **Ensure canopy fabric is not tangled with umbrella ribs.**

Slowly turn the crank handle in a clockwise direction; if the canopy does not begin to open, check that umbrella ribs are not tangled, or look for surrounding obstructions.

NEVER FORCE THE CRANK HANDLE.

Continue turning the crank while at the same time lifting the Main Frame Grip upwards to assist with raising the umbrella canopy.

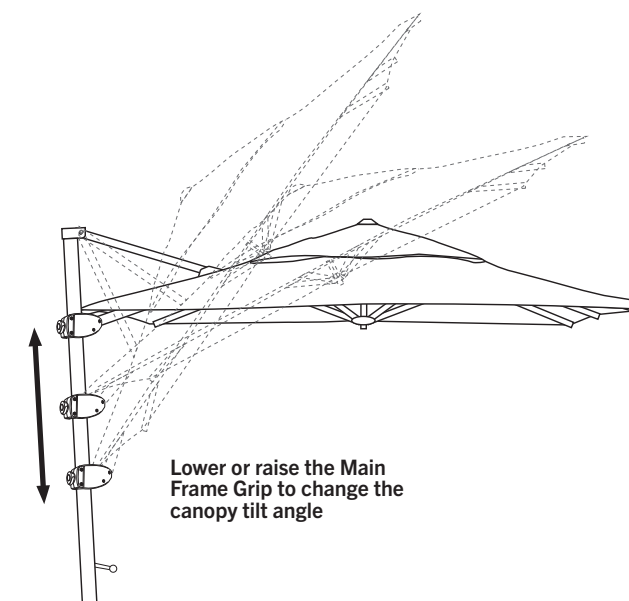
Gently tighten the locking knob once the umbrella is fully raised - to secure the frame.



- 4 To change the canopy tilt angle**

To change the tilt angle of the umbrella canopy, untighten the locking knob and slide the Main Frame Grip up or down to set the preferred tilt angle.

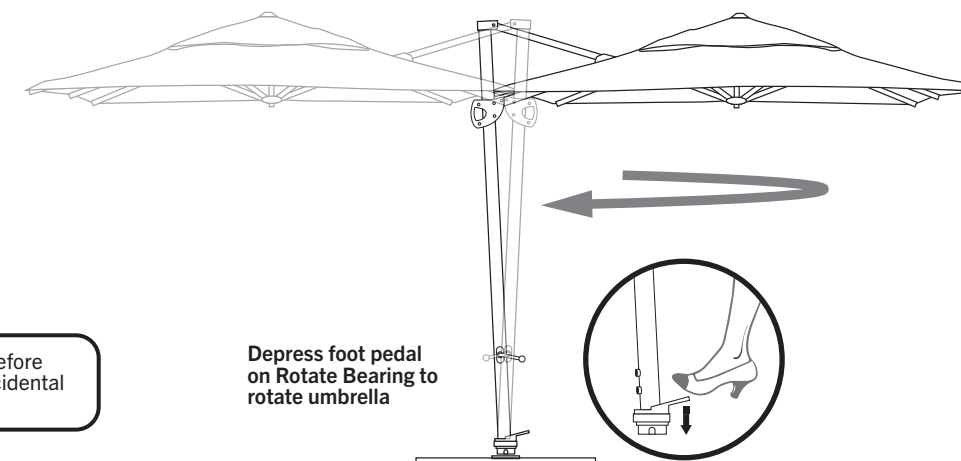
Note: The umbrella will catch more wind when tilted. Always use the tilt feature with extreme caution.

Lower or raise the Main
Frame Grip to change the
canopy tilt angle

- 5 To rotate the umbrella**

To rotate the umbrella, gently step on the Rotate Bearing Foot Pedal and turn the frame to your desired position.

Releasing the foot pedal will lock the Rotate Bearing.

Depress foot pedal
on Rotate Bearing to
rotate umbrella

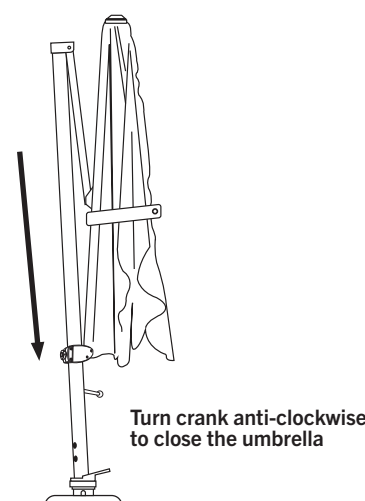
Shelta recommends closing the umbrella before rotating it if a breeze is present to avoid accidental damage to umbrella or nearby structures.

- 6 To close the umbrella**

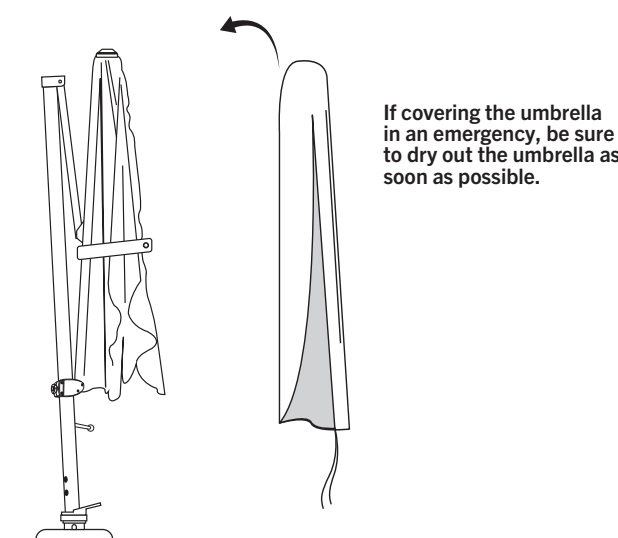
Untighten the locking knob on the Main Frame Grip.

Close the umbrella by turning the crank handle anti-clockwise and simultaneously lowering the Main Frame Grip.

Gently tighten the locking knob on the Main Frame Grip to secure the frame.

Turn crank anti-clockwise
to close the umbrella**Protective cover**

Fit the protective cover to the umbrella if it is not to be used for any period of time. This will protect the umbrella from the elements and help extend the life of the umbrella.

Always dry umbrella before covering.If covering the umbrella
in an emergency, be sure
to dry out the umbrella as
soon as possible.

Umbrella Components

Check for all components before discarding packaging

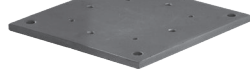
A: Umbrella B: Protective Cover C: Ballast Block Frames



D: Rotate Bearing
(in some cases
attached to the
Mast)



E: On-Ground Plate



F: Crank Handle



H: Screws & Washers



I: Allen Keys x 3



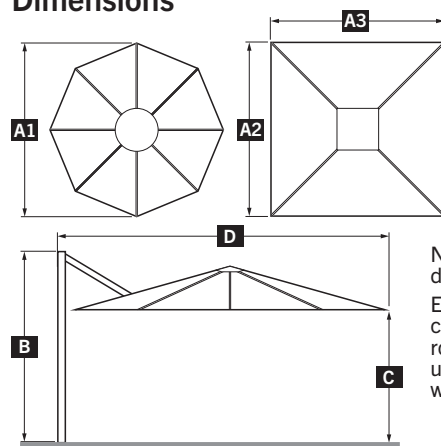
G: Counter Sunk
M8 x 25mm
Screw QTY 4



M8 Washer
QTY 4



Dimensions



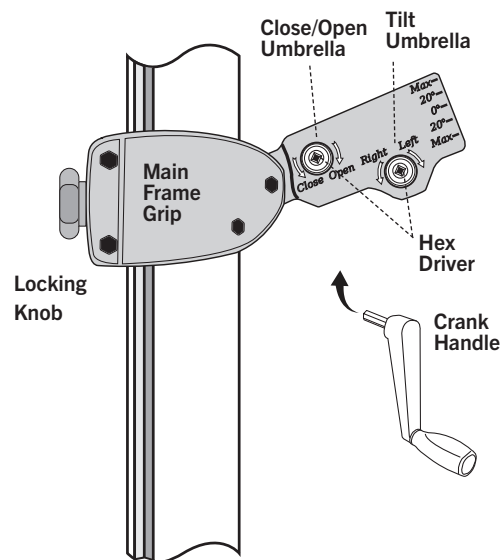
Note the umbrella dimensions.
Ensure there is sufficient clearance to raise, rotate and tilt the umbrella in the location where it will be installed.

Ref	Description	Octagonal	Square
A1	Canopy Diameter	350cm	-
A2	Canopy Size - Depth	-	300cm
A3	Canopy Size - Width	-	300cm
B	Mast Height	273cm	260cm
C	Clearance	205cm	204cm
D	Open Width	370cm	339cm

See page 6 for related clearances information

1

Note the location of the Main Frame Grip on the umbrella mast and note the main parts.



Untightening the Locking Knob on the Main Frame Grip allows it to move up or down. Tightening the knob will lock the Main Frame Grip in place.

Note the two hex drivers into which the crank handle can be inserted.

The driver marked 'Close - Open' is for opening and closing the umbrella.

The driver marked 'Right - Left' is for tilting the umbrella canopy, with degrees of tilt indicated.

3

To open the umbrella

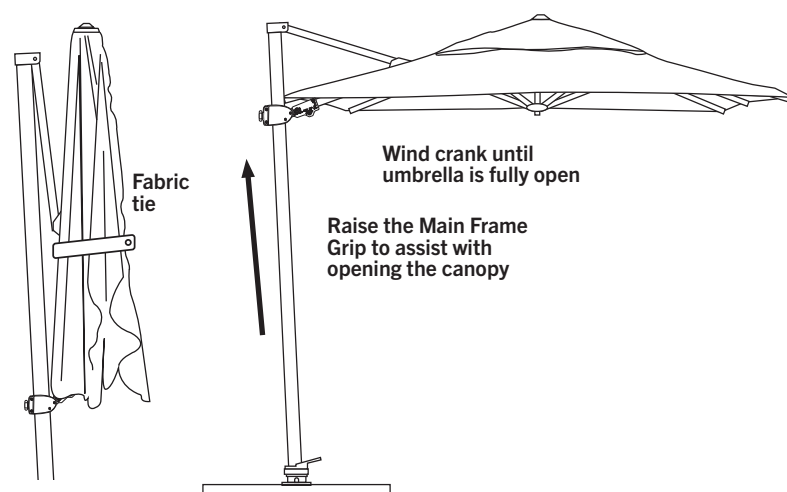
Release the fabric tie and allow the umbrella to unfurl slightly. **Ensure canopy fabric is not tangled with umbrella ribs.**

Insert crank handle into the (Open-Close) hex driver.

Untighten the Locking Knob on the Main Frame Grip and slowly turn the crank handle in a clockwise direction; if the canopy does not begin to open, check that umbrella ribs are not tangled, or look for surrounding obstructions. **NEVER FORCE THE CRANK HANDLE.**

Continue turning the crank while at the same time lifting the Main Frame Grip upwards to assist with opening the umbrella canopy.

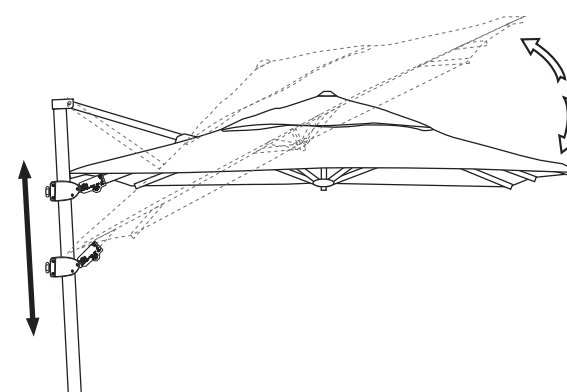
Once the canopy is fully open, tighten the locking knob on the Main Frame Grip.



4

To change the canopy tilt angle

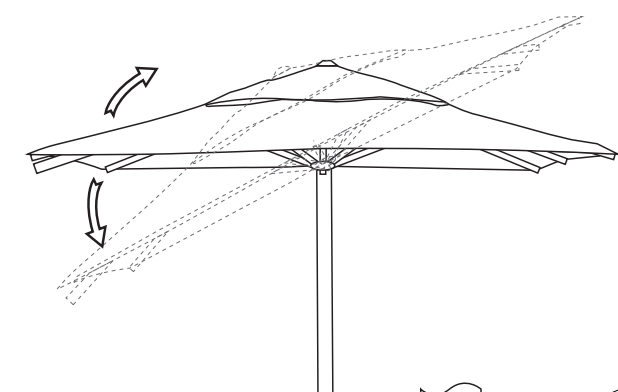
The canopy on this umbrella can be tilted along either the (A) **Primary axis** or (B) **Secondary axis**.



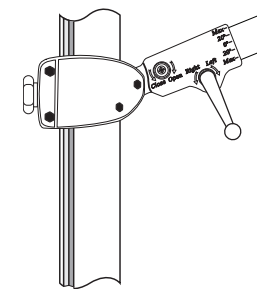
To change the **primary tilt angle** of the umbrella canopy, untighten the locking nut on the Main Frame Grip and move the grip up or down to set the preferred tilt angle.

Tighten the locking nut to secure the Main Frame Grip on the mast.

Note: The umbrella will catch more wind when tilted. Always use the tilt feature with caution.



To change the **secondary tilt angle** of the umbrella canopy, insert the crank handle to hex driver on the Main Frame Grip and turn the crank either direction to tilt the umbrella to the left or right.

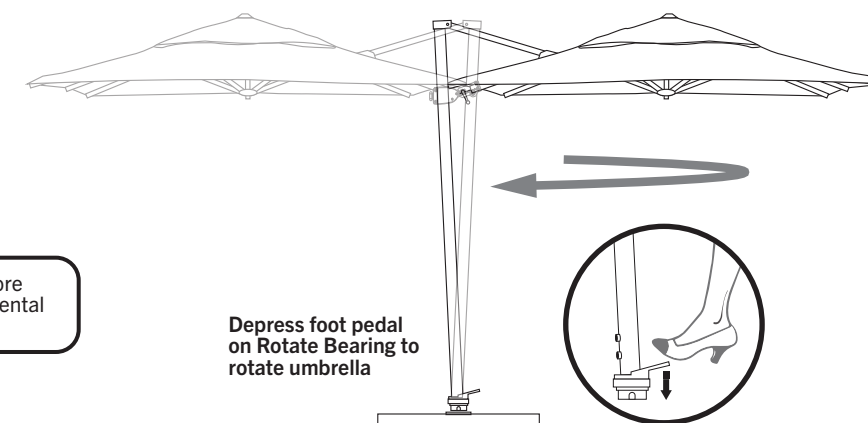


5

To rotate the umbrella

To rotate the umbrella, gently step on the Rotate Bearing Foot Pedal and turn the frame to your desired position.

Releasing the foot pedal will lock the Rotate Bearing.



Shelta recommends closing the umbrella before rotating it if a breeze is present to avoid accidental damage to umbrella or nearby structures.

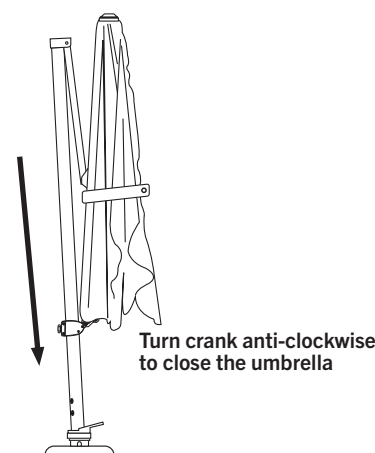
6

To close the umbrella

Insert the crank handle into the hex driver on the Main Frame Grip.

Untighten the locking knob on the Main Frame Grip. Now close the umbrella by turning the crank handle anti-clockwise and simultaneously lowering the Main Frame Grip.

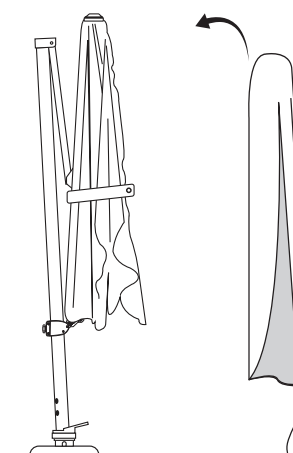
Once the umbrella is fully lowered, tighten the locking knob on the Main Frame Grip.



Protective cover

Fit the protective cover to the umbrella if it is not to be used for any period of time. This will protect the umbrella from the elements and help extend the life of the umbrella.

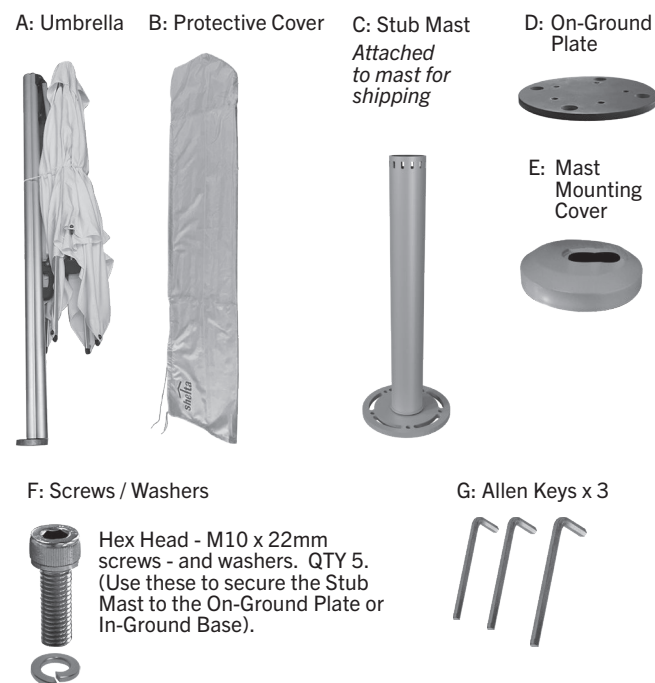
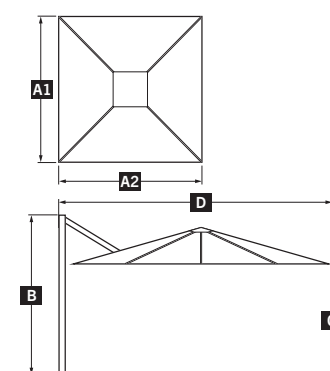
Always dry umbrella before covering.



If covering the umbrella in an emergency, be sure to dry out the umbrella as soon as possible.

Umbrella Components

Check for all components before discarding packaging

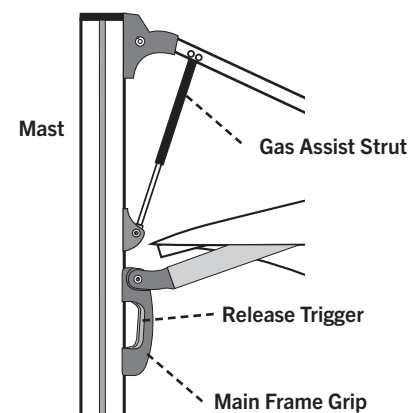
**Dimensions**

Note the umbrella dimensions. Ensure there is sufficient clearance to raise, rotate and tilt the umbrella in the location where it will be installed.

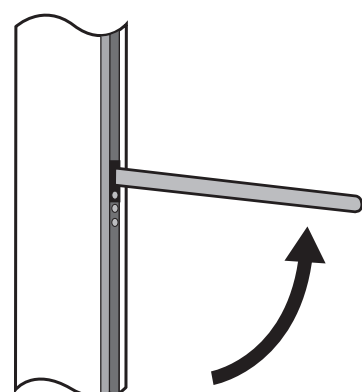
Ref	Description	Square
A1	Canopy Size - Depth	300cm
A2	Canopy Size - Width	300cm
B	Mast Height	271cm
C	Clearance	227cm
D	Open Width	320cm

See page 6 for related clearances information

- 1 Note the location of the Main Frame Grip, Grip Release Trigger, and Gas Assist Strut.



- 2 Note the location of the Mast Rotator Handle.



- 3 To open the umbrella

Release the fabric tie and allow the umbrella to unfurl slightly. **Ensure canopy fabric is not tangled with umbrella ribs.**

Squeeze the Release Trigger on the Main Frame Grip. Hold the Grip and Trigger firmly while gently lifting the Main Frame Grip upwards. The Gas Strut will assist with the opening of the umbrella frame and canopy

If the canopy does not begin to open, check that umbrella ribs are not tangled, or look for surrounding obstructions.

Gently release the Trigger once the umbrella is fully open. Raise or lower the grip slightly until it engages on the mast.



- 4 To rotate the umbrella

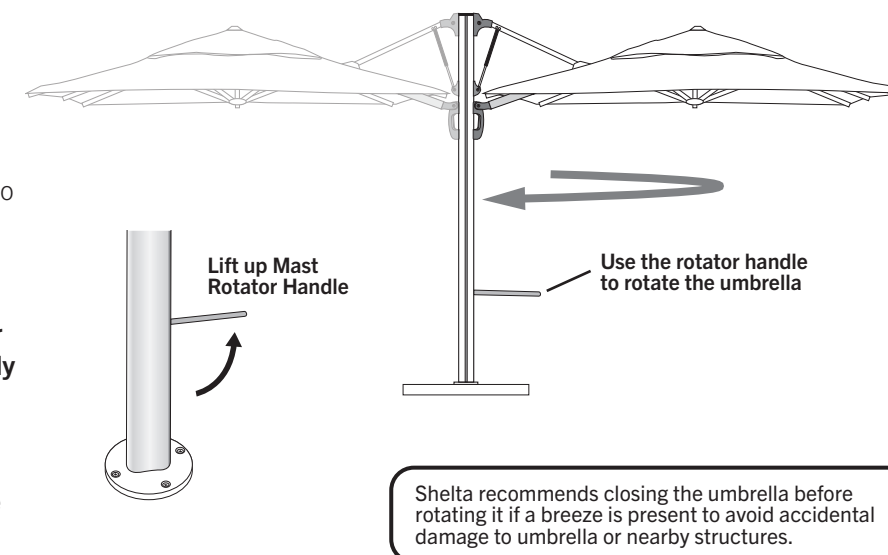
Lift up the end of the Rotator Handle. Use the handle to turn the umbrella.

Once the umbrella is in position, return the handle to the channel in the mast, to lock in place.

Note: The spigot has 10 preset detents on which the mast will engage.

Ensure the mast is locked from further rotation by turning the umbrella slightly until the internal locking pin engages on the stub mast.

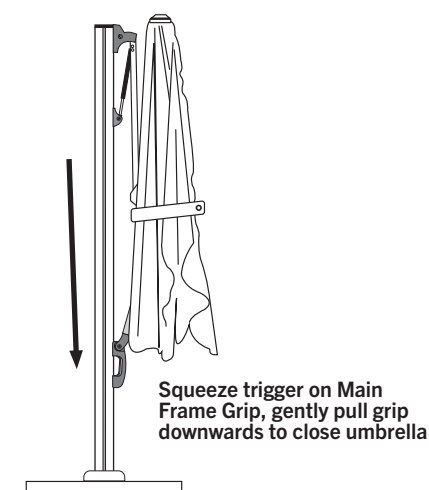
This prevent the umbrella from accidentally rotating or uplifting in the event of a breeze.



- 5 To close the umbrella

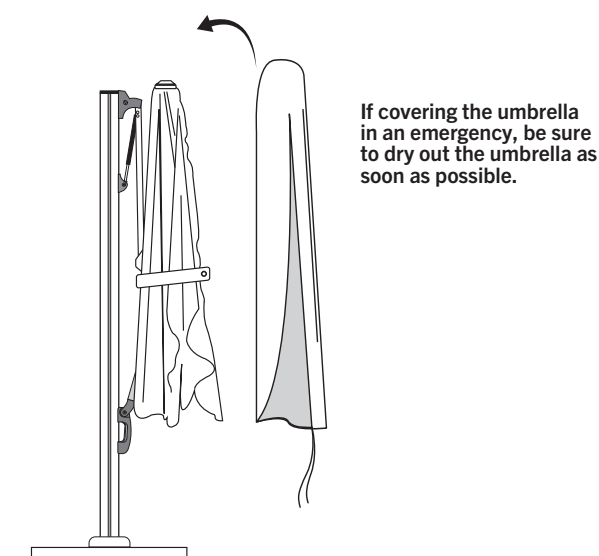
Squeeze Release Trigger on Main Frame Grip. Hold trigger firmly while simultaneously lowering the Main Frame Grip.

Once the umbrella is closed, release the trigger and move the grip up or down slightly to engage on the mast.

**Protective cover**

Fit the protective cover to the umbrella if it is not to be used for any period of time. This will protect the umbrella from the elements and help extend the life of the umbrella.

Always dry umbrella before covering.



Umbrella Components

Check for all components before discarding packaging

A: Umbrella B: Protective Cover

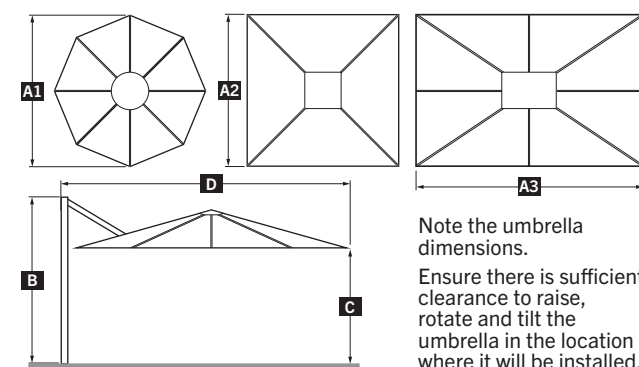
C: Stub Mast

D: Crank Handle

E: Screws
Counter Sunk
M10 Screw
QTY 4

F: Small Allen Key

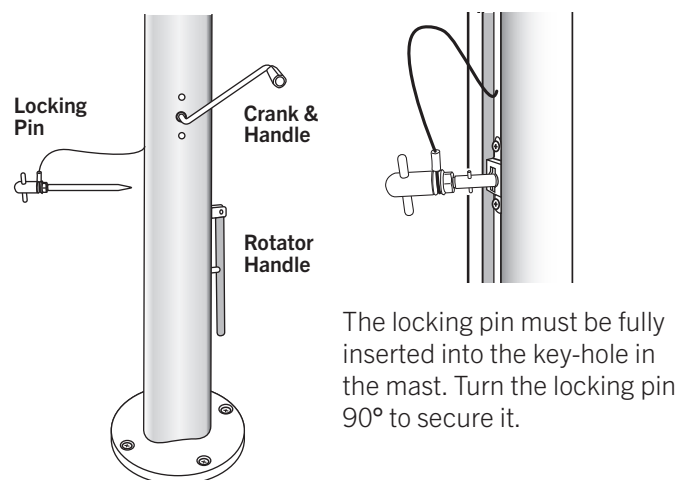
Small protective packaging sleeves are fitted to the frame and ribs to prevent transit damage - **Remove all protective packaging from umbrella frame before use.**

Dimensions

Ref	Description	Octagonal	Square	Rectangular
A1	Canopy Diameter	400cm	-	-
A2	Canopy Size - Depth	-	350cm	300cm
A3	Canopy Size - Width	-	350cm	400cm
B	Mast Height	288cm	290cm	284cm
C	Clearance	225cm	207cm	230cm
D	Open Width	423cm	374cm	323cm

See page 6 for related clearances information

- 1 Note the location of the crank handle, locking pin and rotator handle.



The locking pin must be fully inserted into the key-hole in the mast. Turn the locking pin 90° to secure it.

- 3 To open the umbrella

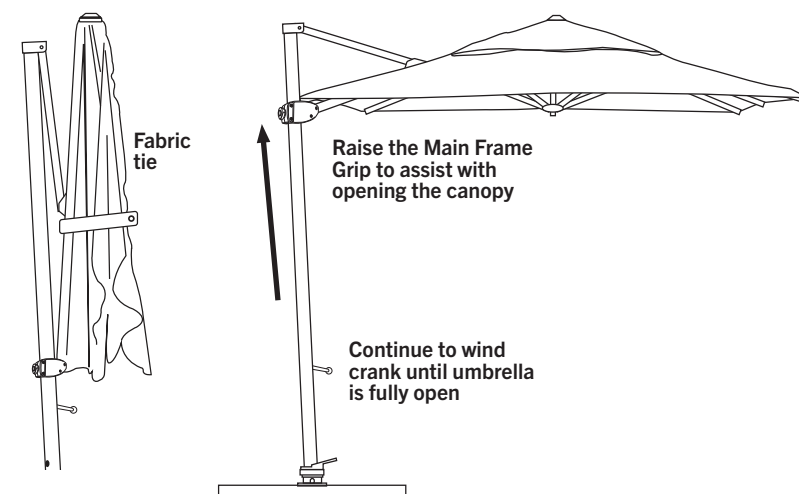
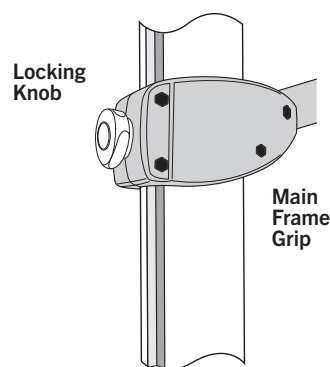
Release the fabric tie and allow the umbrella to unfurl slightly. **Ensure canopy fabric is not tangled with umbrella ribs.**

Untighten the Locking Knob on the Main Frame Grip. Slowly turn the crank handle in a clockwise direction; if the canopy does not begin to open, check that umbrella ribs are not tangled, or look for surrounding obstructions. **NEVER FORCE THE CRANK HANDLE.**

Continue turning the crank while at the same time lifting the Main Frame Grip upwards to assist with raising the umbrella canopy.

Gently tighten the locking knob once the umbrella is fully raised - to secure the frame.

- 2 Note the location of the Main Frame Grip on the umbrella mast. Note the locking knob.



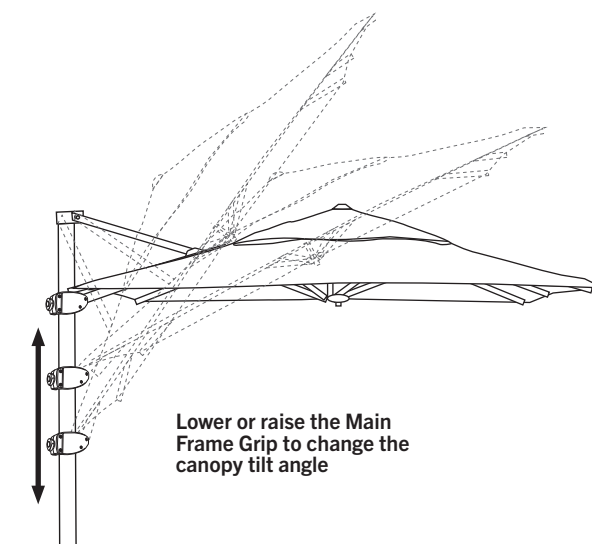
Raise the Main Frame Grip to assist with opening the canopy

Continue to wind crank until umbrella is fully open

- 4 To change the canopy tilt angle

To change the tilt angle of the umbrella canopy, untighten the locking knob and slide the Main Frame Grip up or down to set the preferred tilt angle.

Note: The umbrella will catch more wind when tilted. Always use the tilt feature with extreme caution.



Lower or raise the Main Frame Grip to change the canopy tilt angle

- 5 To rotate the umbrella

Close the umbrella canopy before rotating the umbrella

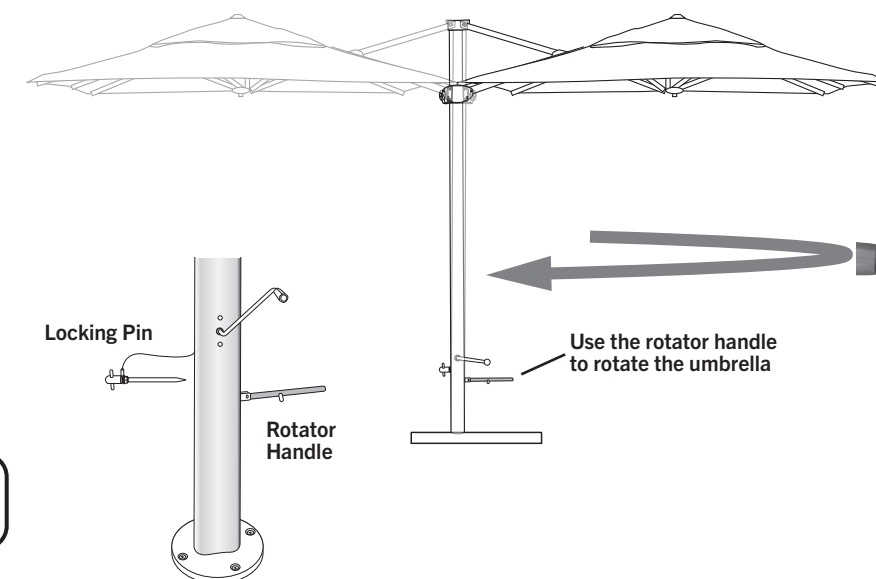
Remove the locking pin from the mast.

Use the rotator handle to turn the umbrella.

Once the umbrella is in position, reinsert the locking pin and turn it to lock in place.

The locking pin must be in place at all times to prevent the umbrella from uplifting in the event of high wind.

Shelta recommends closing the umbrella before rotating it if a breeze is present to avoid accidental damage to umbrella or nearby structures.



Locking Pin

Rotator Handle

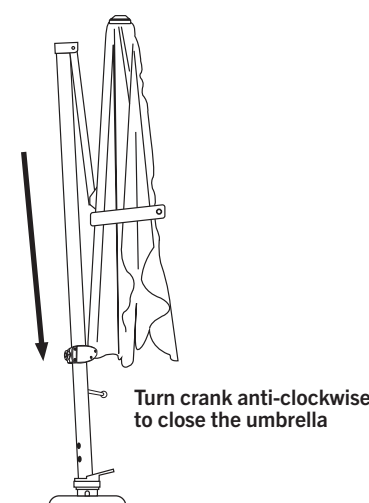
Use the rotator handle to rotate the umbrella

- 6 To close the umbrella

Untighten the locking knob on the Main Frame Grip.

Close the umbrella by turning the crank handle anti-clockwise and simultaneously lowering the Main Frame Grip.

Gently tighten the locking knob on the Main Frame Grip to secure the frame.

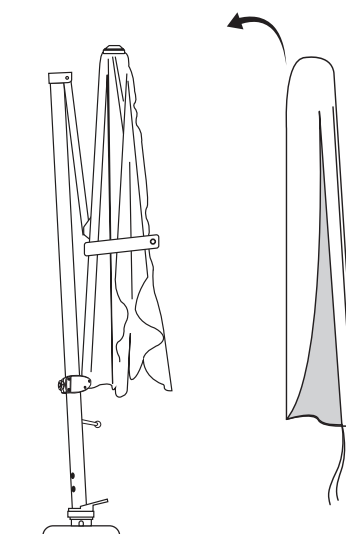


Turn crank anti-clockwise to close the umbrella

Protective cover

Fit the protective cover to the umbrella if it is not to be used for any period of time. This will protect the umbrella from the elements and help extend the life of the umbrella.

Always dry umbrella before covering.

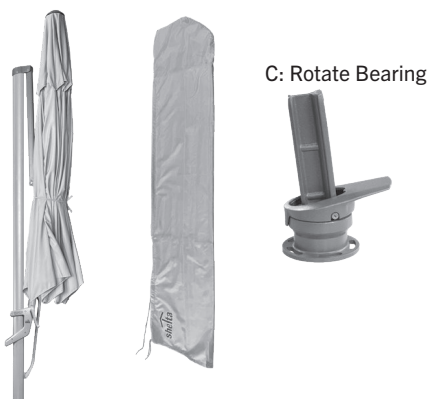


If covering the umbrella in an emergency, be sure to dry out the umbrella as soon as possible.

Umbrella Components

Check for all components before discarding packaging

A: Umbrella B: Protective Cover



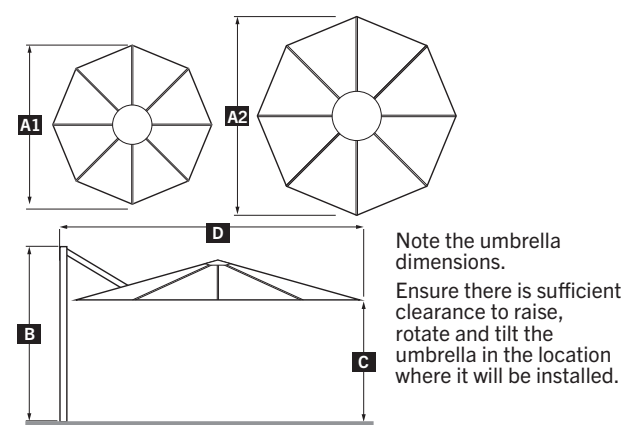
C: Rotate Bearing

D: On-Ground Plate

E: Crank Handle

F: Screws & Washers

G: Allen Keys x 3

**Dimensions**

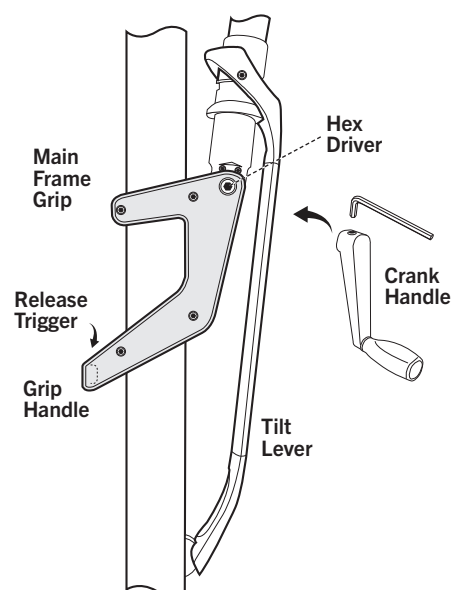
Note the umbrella dimensions.
Ensure there is sufficient clearance to raise, rotate and tilt the umbrella in the location where it will be installed.

Ref	Description	Octagonal 350	Octagonal 400
A1	Canopy Diameter	350cm	-
A2	Canopy Diameter	-	400cm
B	Mast Height	279cm	300cm
C	Clearance	213cm	231cm
D	Open Width	367cm	417cm

See page 6 for related clearances information

1

Note the location of the Main Frame Grip on the umbrella mast and note the main parts.



Squeezing the trigger on the grip handle allows the Main Frame Grip to move up or down. Releasing the trigger will lock the Main Frame Grip in place.

Note the hex driver onto which the crank handle can be inserted. **Tighten the crank on the driver using the small Allen key.**

Note the tilt lever which is used to tilt the canopy left or right.

3

To open the umbrella

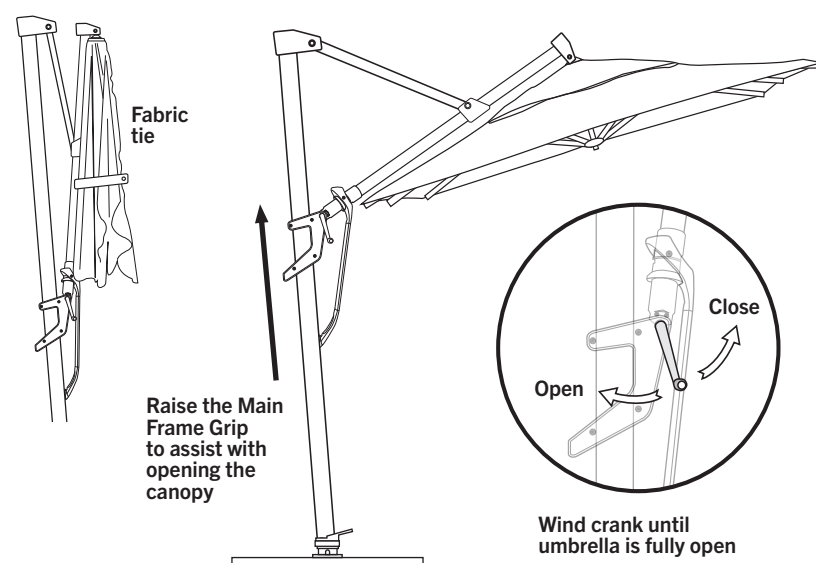
Release the fabric tie and allow the umbrella to unfurl slightly. **Ensure canopy fabric is not tangled with umbrella ribs.**

Insert crank handle into the hex driver.

Squeeze the trigger on the Main Frame Grip and slowly turn the crank handle in a clockwise direction; if the canopy does not begin to open, check that umbrella ribs are not tangled, or look for surrounding obstructions. **NEVER FORCE THE CRANK HANDLE.**

Continue turning the crank while at the same time lifting the Main Frame Grip upwards to assist with opening the umbrella canopy.

Once the canopy is fully open, release the trigger on the Main Frame Grip. Move the grip up or down slightly until the locking pin engages with the detent on the mast.



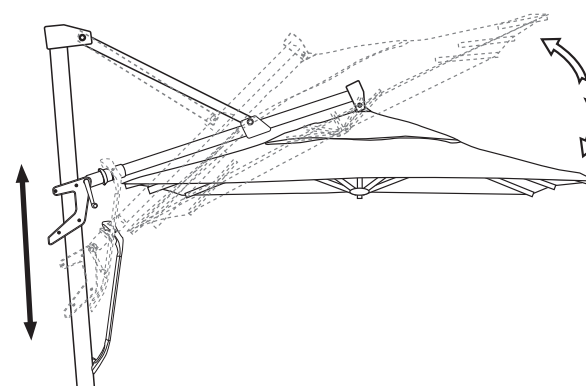
Raise the Main Frame Grip to assist with opening the canopy

Wind crank until umbrella is fully open

4

To change the canopy tilt angle

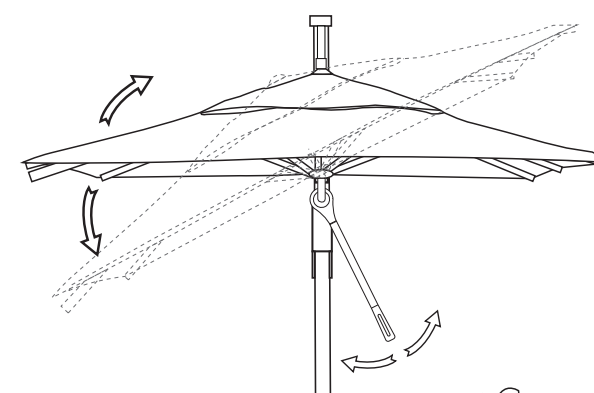
The canopy on this umbrella can be tilted along either the (A) **Primary axis** or (B) **Secondary axis**.



To change the **primary tilt angle** of the umbrella canopy, squeeze the trigger on the Main Frame Grip and move the grip up or down to set the preferred tilt angle.

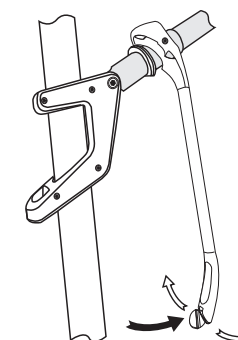
Release the trigger - move the grip up or down slightly until it engages on the mast.

Note: The umbrella will catch more wind when tilted. Always use the tilt feature with caution.



To change the **secondary tilt angle** of the umbrella (from left to right) pull the tilt lever forward and then swing the lever to the left or right to tilt the canopy.

Lock the tilt lever to the mast when finished.



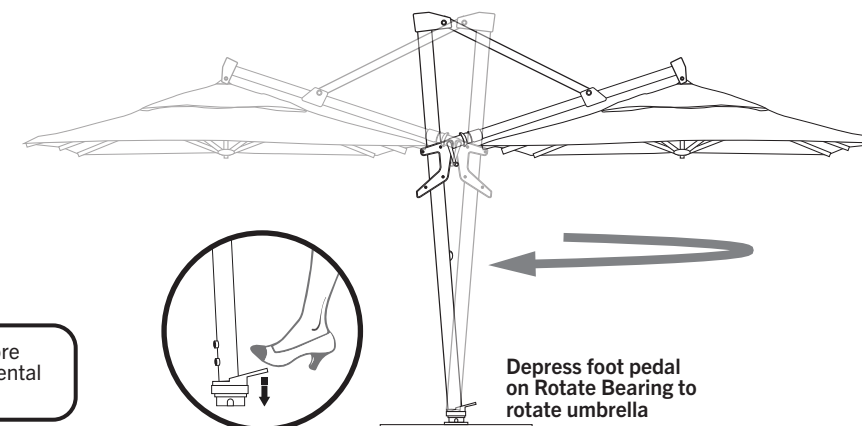
5

To rotate the umbrella

To rotate the umbrella, gently step on the Rotate Bearing Foot Pedal and turn the frame to your desired position.

Releasing the foot pedal will lock the Rotate Bearing.

Shelta recommends closing the umbrella before rotating it if a breeze is present to avoid accidental damage to umbrella or nearby structures.



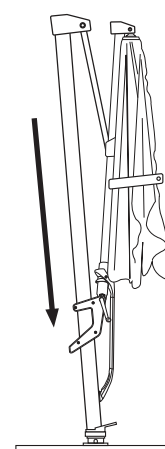
Depress foot pedal on Rotate Bearing to rotate umbrella

6

To close the umbrella

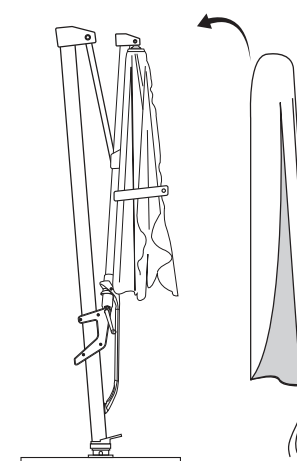
Squeeze trigger on Main Frame Grip, turn the crank handle anti-clockwise and simultaneously lower the Main Frame Grip.

Release the trigger to secure the Main Frame Grip in place on the mast.

**Protective cover**

Fit the protective cover to the umbrella if it is not to be used for any period of time. This will protect the umbrella from the elements and help extend the life of the umbrella.

Always dry umbrella before covering.



If covering the umbrella in an emergency, be sure to dry out the umbrella as soon as possible.

8) Integrated LED Lighting System

How To Use

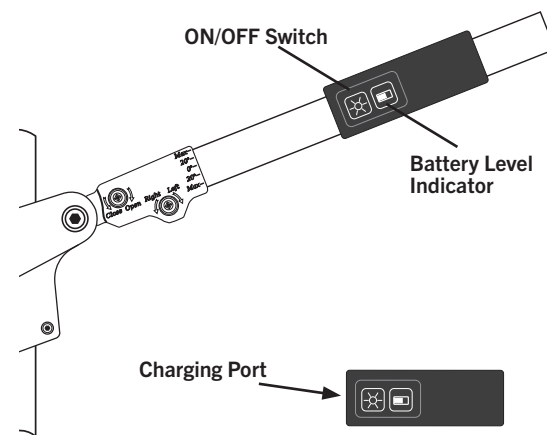
The Integrated lighting system is available on the following models:

Models: AG15AII - Emery, AG5CA - Shelly.

Battery:

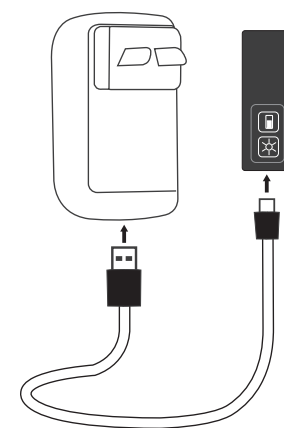
Note the location of the battery (including switch and charging port)

The battery is magnetically attached to the main rib on the canopy. It can be removed for charging.



Prior to first time use, fully charge the battery using the charger provided. Use only the AC charger and USB cable supplied - do not use any other charger without consulting Shelta Australia.

NOTE: For models with solar charging panel (AG15AII - Emery) the solar unit will charge the battery whenever the panel is exposed to sunlight. The battery can also be charged, using the charger supplied.

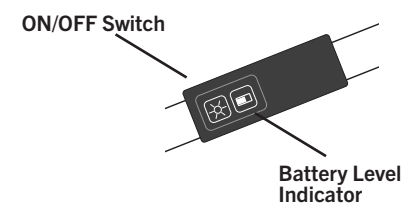


Turning the unit ON/OFF

Use the switch located on the battery unit to turn the LED lighting on or off as required.

The level indicator will show the current charge state of the battery. When low is indicated, the battery should be re-charged.

Always turn the LED lighting system off when not in use to minimise battery drain.



8) LED Lighting / Bluetooth Speaker

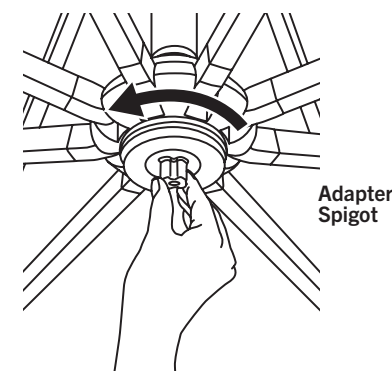
How To Install

The optional LED Umbrella Light or Bluetooth Speaker can be attached to these Shelta Cantilever Umbrellas.

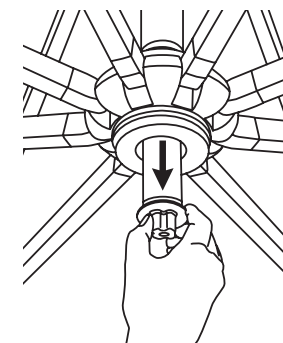
Models: AG5A, AG5C, AG5CA, AG15A, AG15AII, AD45, AG45, AG35, AG25, AG25AB, AG65, AKZP

To install the LED Umbrella Light

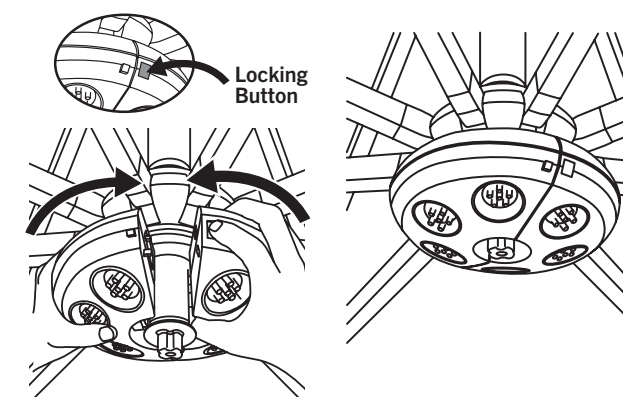
Step 1. Note the location of the built-in light adapter spigot at the bottom of the runner. Unscrew (loosen) the adapter by turning it in an anti-clockwise direction.



Step 2. Gently pull the adapter spigot downwards.

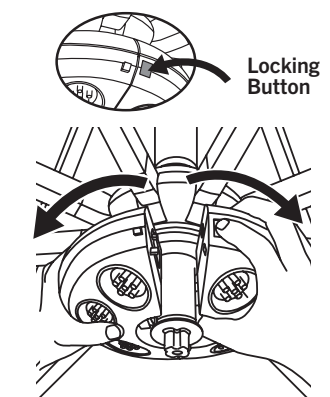


Step 3. Open the umbrella light by gripping it on both sides - while depressing the square locking button - the umbrella light will open. Attach the umbrella light to the adapter. Close the umbrella light. Ensure it is secured in place around the adapter spigot.

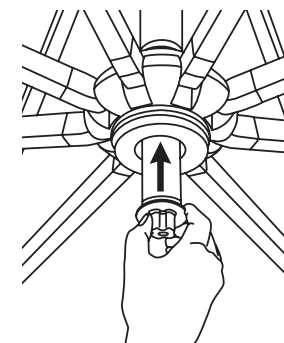


Note: To remove the umbrella light.

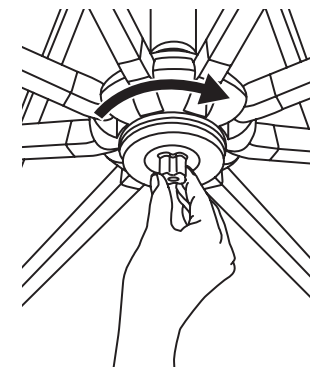
Grip the body of the umbrella light body with both hands, while depressing the locking button... Gently pull the light apart and remove it from the adapter spigot.



Push the adapter up, into the runner body.



Gently tighten the adapter by turning it in a clockwise direction.





Shelta Australia
Phone 61 2 8863 0400
Email admin@shelta.com.au
Web: www.shelta.com.au

Made in China
Copyright © 2024 All rights reserved

Any Questions? Visit our website: www.shelta.com.au or contact Shelta by email: admin@shelta.com.au

