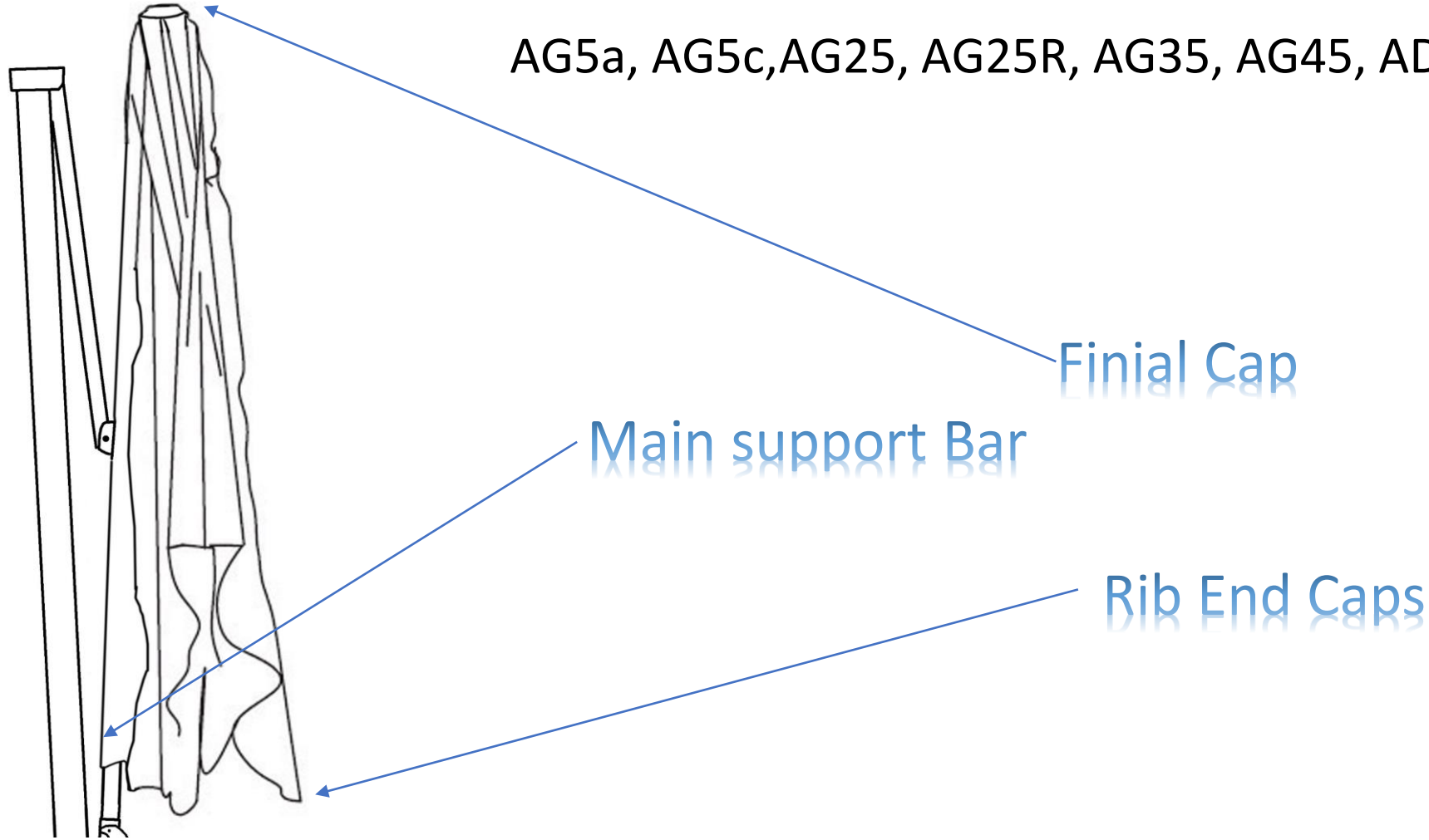


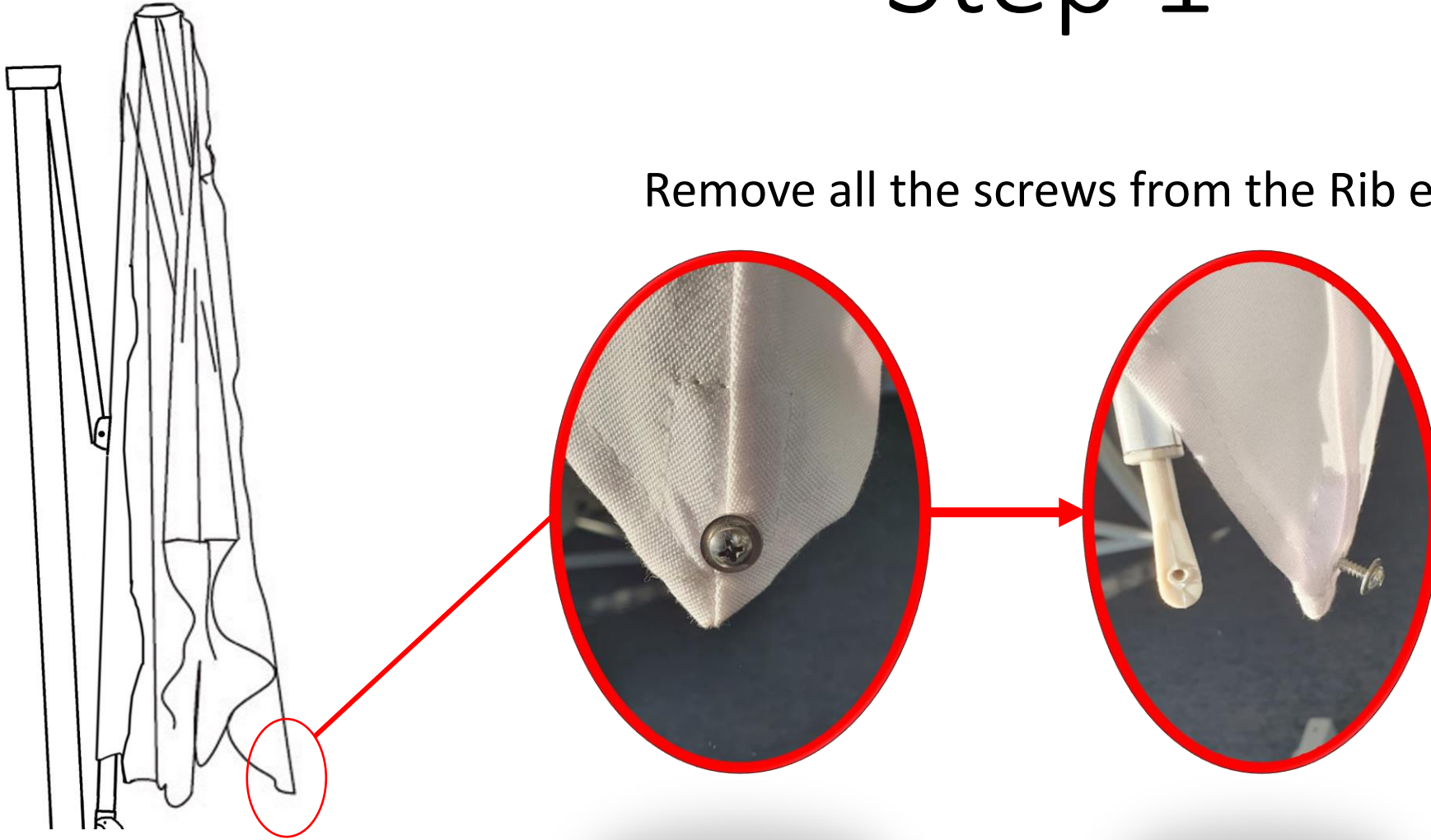
# Canopy Change

AG5a, AG5c, AG25, AG25R, AG35, AG45, AD45, AG55, AG65



# Step 1

Remove all the screws from the Rib ends (7)

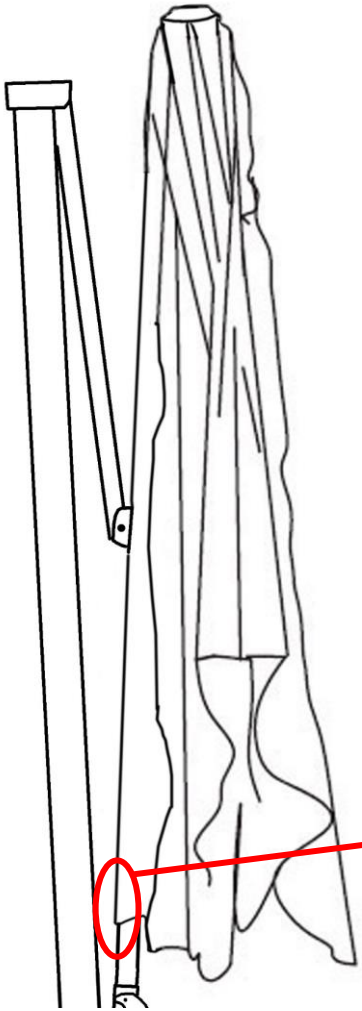


# Step 2

Raise the umbrella slightly so you can remove the support bar canopy

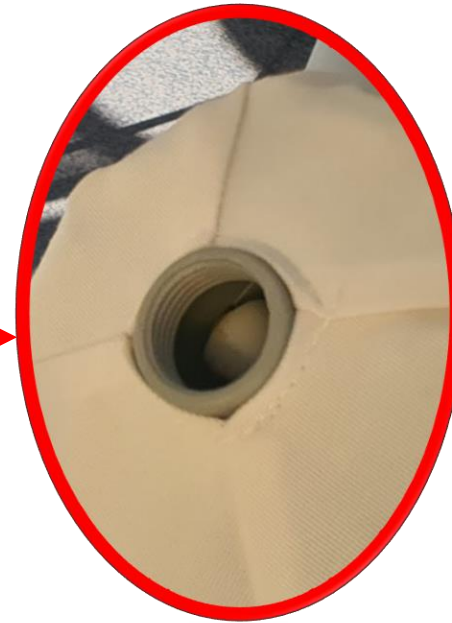
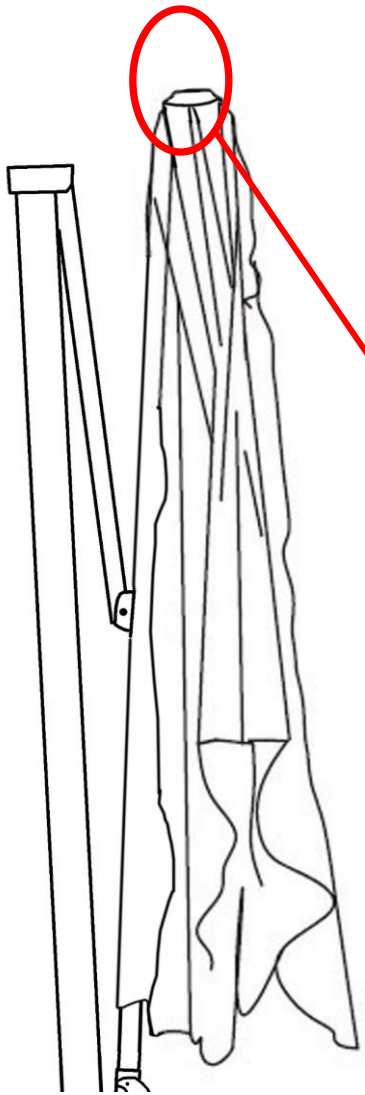
**screw** — depending on the model, this step may require a stumpy Phillips head.

Rip the Velcro apart all the way to the protector pad

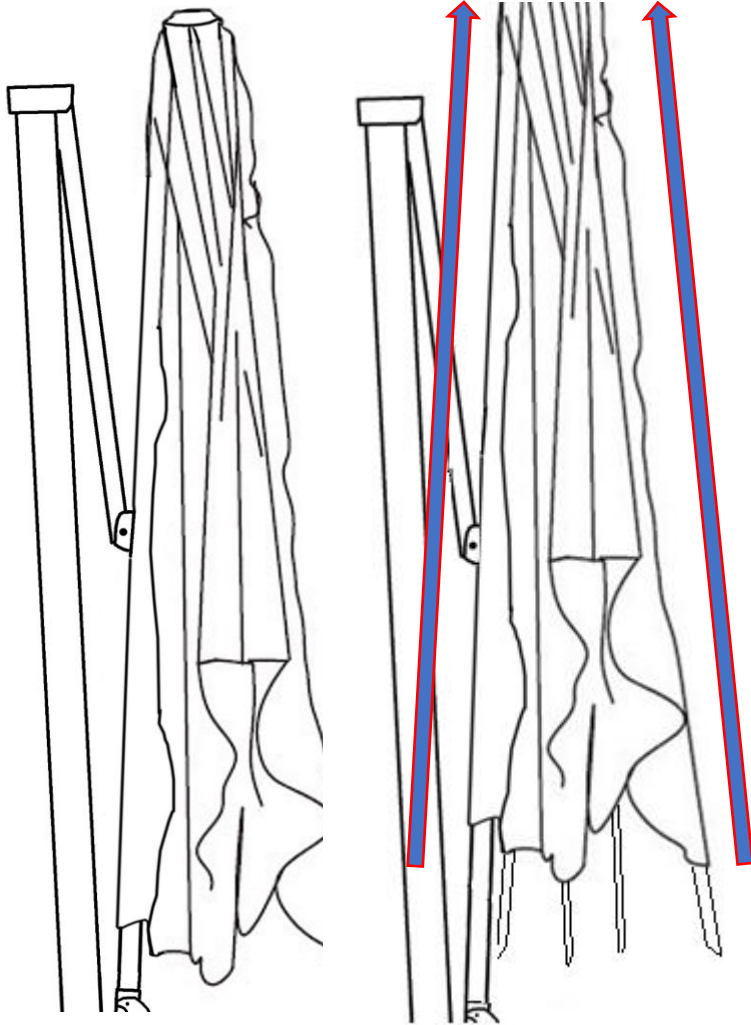


# Step 3

Remove the finial by unscrewing it in a counter clockwise direction.  
You can use a step ladder for this step



# Step 4



Lift the canopy up and over the structure.  
You can use a step ladder for this step



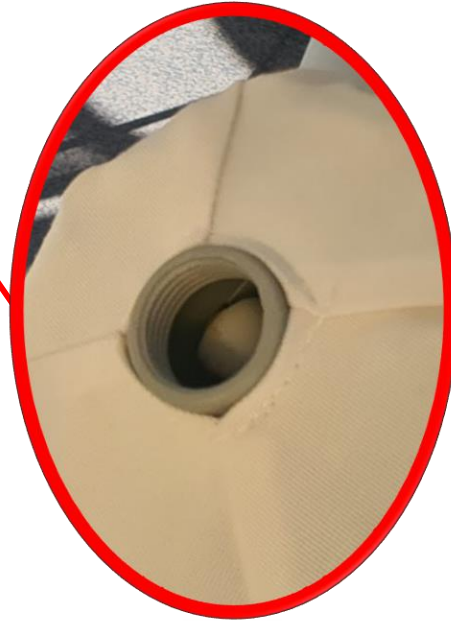
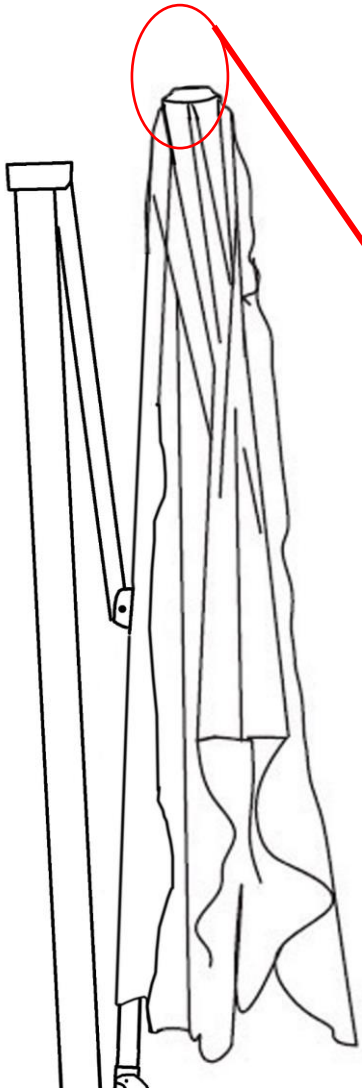
# Step 5

Place the new canopy over the structure and align the hole and the support arm Velcro under the protective pad



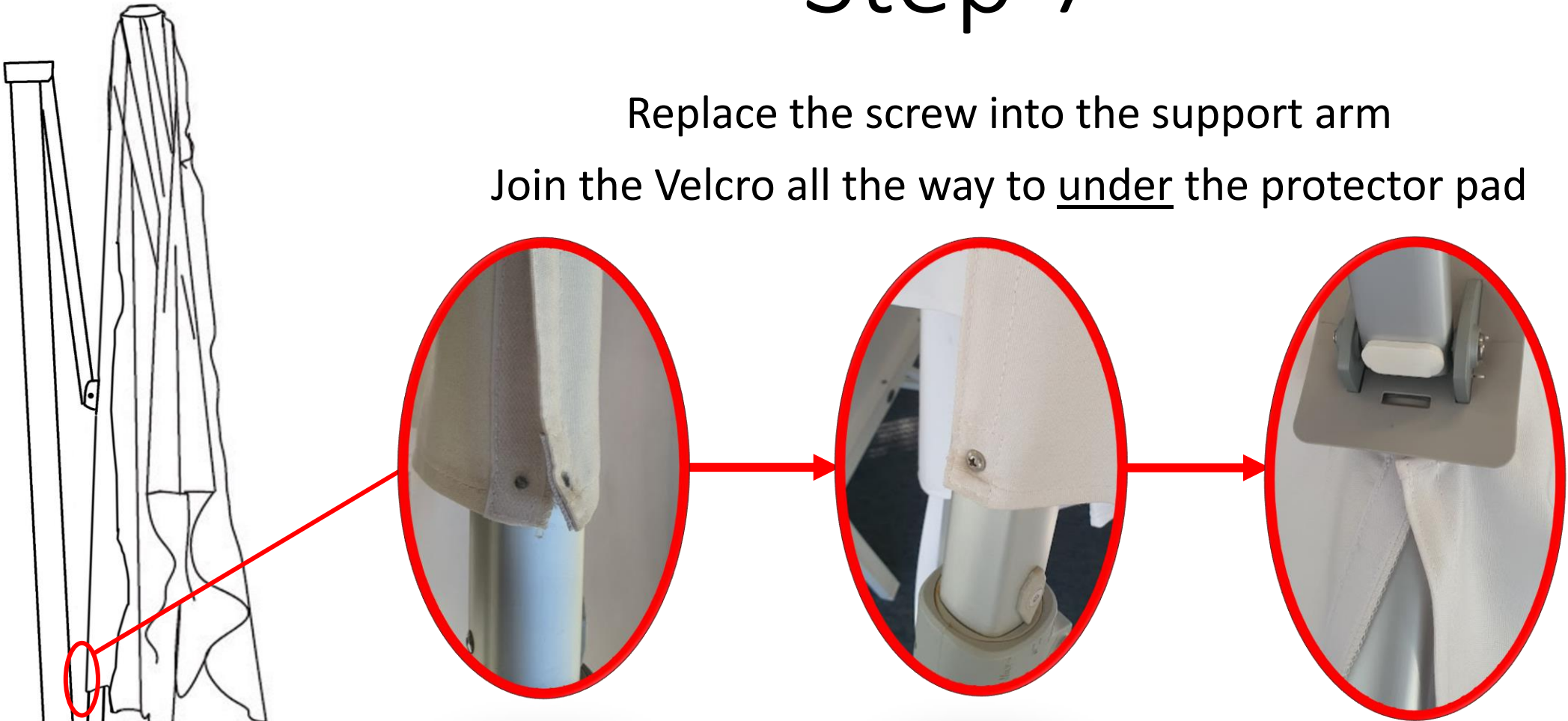
# Step 6

Replace the finial by screwing it in a clockwise direction.  
You can use a step ladder for this step



# Step 7

Replace the screw into the support arm  
Join the Velcro all the way to under the protector pad





# Step 8

Replace all the screws in the Rib ends (7)

Then wind up the canopy slowly to allow proper unfolding

